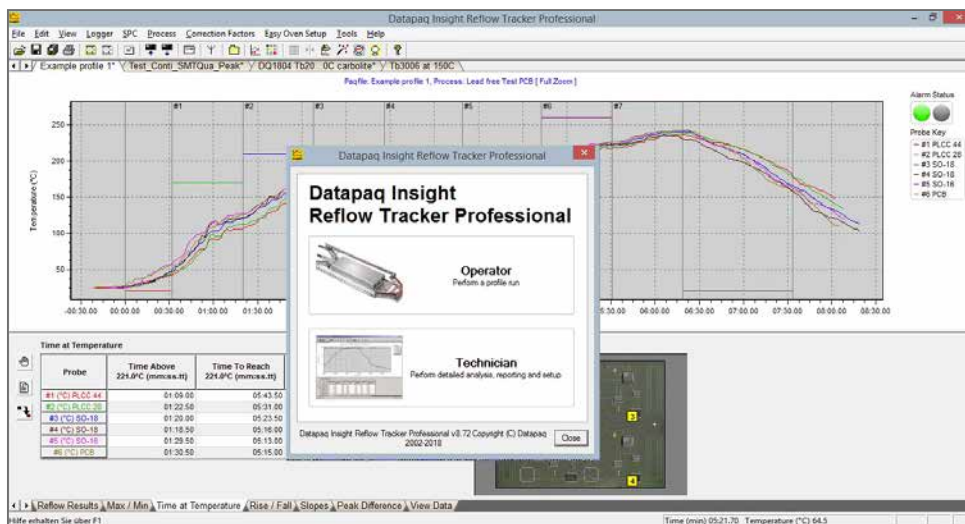


### Technical Data

# Software Options for Reflow Tracker Systems



Datapaq Insight Reflow Tracker is available in three performance options ... choose the price/performance that best meets your needs.

The three Insight software products are designed to convert your raw data into meaningful information that can be acted on. All options provide a clear user interface, context sensitive help screens and wizards to assist infrequent users. The ability to change the language and email results directly at the touch of a button enables you to share information across the factory and across the world.

## Datapaq Insight Reflow Tracker Basic

The cost effective solution for general profile checking of both wave and reflow soldering processes. The basic software displays the full profile results on one easy to read screen while enabling a deep dive into the data via further analysis functions when needed. The quick-to-set-up single screen process file enables the oven zones and set points to be overlaid on the profile, ensuring rapid trouble shooting.

## Datapaq Insight Reflow Tracker

The popular Insight Reflow Tracker software builds on Insight basic by adding both profile prediction and recipe calculation functionality, making light work of product changeover and process optimization. Combined with the built in Statistical Process Control and multiple profile overlay features the Insight Reflow Tracker software provides every tool required to set up, optimize and trouble shoot all soldering processes.

## Datapaq Insight Reflow Tracker Professional

The Insight Reflow Tracker Professional software adds to Reflow Insight with the ability to monitor process stability using the Surveyor – an easy to use tool with simple wizard driven user interface that enables operators to profile frequently without the problems associated with the use of golden boards.

## Technical Specifications

Datapaq Insight Reflow Tracker	Basic SW5060B	Standard SW5060	Professional SW5060P
Surveyor	–	–	Yes
Customization of software screens	–	–	Yes
Easy Oven Set up recipe calculation	–	Yes	Yes
Reflow oven profile prediction	–	Yes	Yes
Support for process files	Yes (single page)	Yes	Yes
Data analysis functionality	Yes	Yes (not Surveyor)	Yes
Support for Wave solder profiling	Yes	Yes	Yes
One touch E-mail results files	Yes	Yes	Yes
Wizards to step novice users through processes	Yes	Yes	Yes
Hard wired telemetry for work station monitoring	–	Yes	Yes
Radio telemetry for immediate results	–	Yes	Yes
Statistical Process Control calculations	–	Yes	Yes
Analysis alarms instant go/no-go indications	–	Yes	Yes
Results file overlay rapid comparison of files	Limited to one	Yes	Yes
Copy data – share or export to other Windows software	Yes	Yes	Yes
Import data	–	Yes	Yes
Logger correction factors – automatic	–	–	Yes
One click language change	Yes	Yes	Yes
Format the printed report	Single page only	Yes	Yes
Overlay files while logging in real-time	–	Yes	Yes
Tolerance curves – graphical tolerance band check	–	Yes	Yes
Virtual probes – i.e., slopes at every point	–	Yes	Yes
Thermal Contour Plot	–	Yes	Yes
SPC Extrapolation	–	–	Yes
OPC – real time data sharing with enterprise software	Yes	Yes	Yes
Run alarms	–	Yes	Yes
Track thermocouple usage	–	Yes	Yes
Simplified process file	Yes	–	–
Overlays	1	10	10

## Fluke Process Instruments

### Americas

Salem, NH USA  
Tel: +1 603 446 6780  
[sales@flukeprocessinstruments.com](mailto:sales@flukeprocessinstruments.com)

### EMEA

Cambridge, UK  
Tel: +44 1223 652 400  
[sales@flukeprocessinstruments.co.uk](mailto:sales@flukeprocessinstruments.co.uk)

### China

Beijing, China  
Tel: +86 10 6438 4691  
[sales@flukeprocessinstruments.com.cn](mailto:sales@flukeprocessinstruments.com.cn)

### Asia East and South

India Tel: +91 22 2920 7691  
Singapore Tel: +65 6799 5596  
[sales.asia@flukeprocessinstruments.com](mailto:sales.asia@flukeprocessinstruments.com)

### Worldwide Service

Fluke Process Instruments offers services, including repair and calibration. For more information, contact your local office.

**[www.flukeprocessinstruments.com](http://www.flukeprocessinstruments.com)**

© 2018 Fluke Process Instruments  
Specifications subject to change without notice.  
5/2018 DS\_Reflow\_Insight\_software\_options\_EN\_Rev A