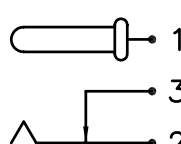
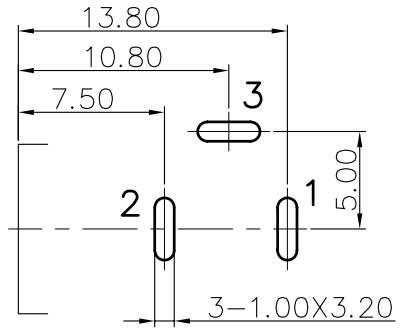
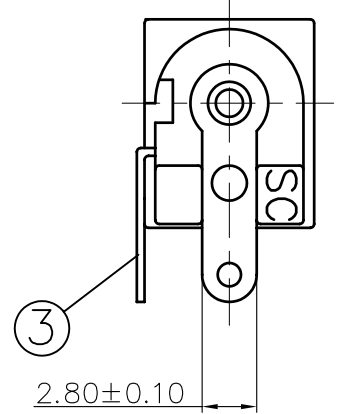
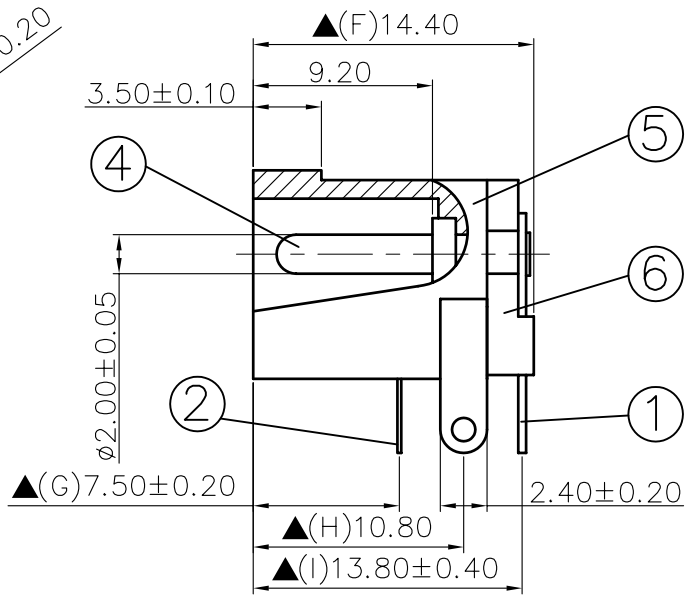
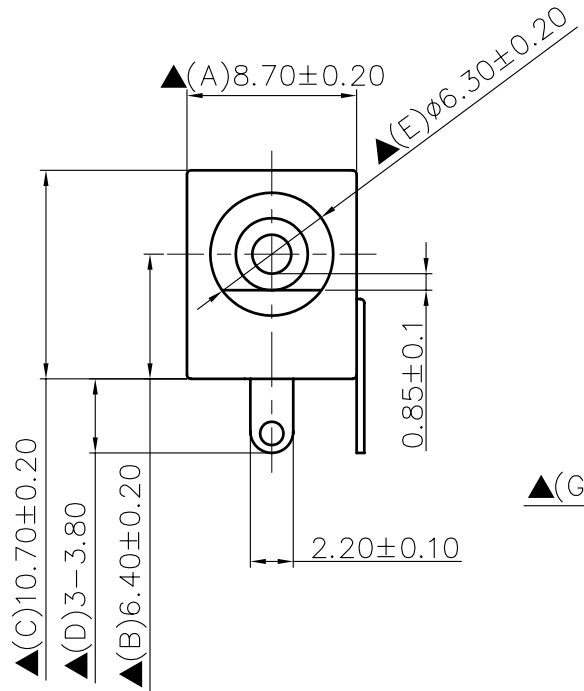



SCHEMATIC	
MODEL NO	C



6.	Cover	PBT+30% Fibre Glass	1	Black Color
5.	Housing	PBT+30% Fibre Glass	1	Black Color
4.	Pin(2.0φ)	Copper	1	Nickel Plated
3.	Break Terminal	0.4T Brass	1	Silver Plated
2.	Sleeve Spring	0.2T Phosphor Bronze	1	Silver Plated
1.	Pin Terminal	0.4T Brass	1	Silver Plated
NO.	Description	Material	Q'TY	Finish

 <b>S.C. PRECISION INDUSTRIAL CO., LTD.</b>	DATE	DWN	CHKD	APVD	MANAGER
	11.01.2012				

RoHS Compliant For Reference 僅供參考

PART NAME :DC POWER JACK PART NUMBER:SCD438CCS011B00G VERSION:8.0

TOLERANCE :±0.3mm UNLESS OTHERWISE SPECIFIED UNIT:mm  SCALE:1/1

**SPECIFICATIONS:**  
 Contact Resistance : 30mΩ max  
 Current Rating : Max 5.0A , 24V DC  
 Insulation Resistance : 100MΩ min. at DC 500V  
 Dielectric Withstand Voltage : AC 500V for one minute  
 Remark: ▲: The Most Important Dimension

# DC POWER JACK

## Feature:

The **DC POWER JACKS** can be intended for portable TV, portable DVD, scanner, printer, and mobile phone device such as battery charger, Blue tooth hands free kit.

## Construction:

● Housing: Thermoplastic ● Center pin: Nickel plating ● Terminal: Brass/Copper alloy

## Specification:

- Rating: 0.5A/12VDC(SCD410/411/412/415/420/425/473)  
1.0A/12VDC(SCD430/463/465/SCDP310)  
3.0A/12VDC(SCD480/481)  
2.0A/13.5VDC(SCD460/461/462/468)  
0.5A/16VDC(SCD469/470/471/472)  
2.0A/16VDC(SCD435/437/438/441/442/443/445/446/447/450/451/452/453/454  
/456/457/458/510/513/516/519/522/523/525/528/554/556)
- Withstanding voltage: AC500V 60Hz for 1 minute
- Insulation resistance: 100M $\Omega$  (min.) at 500VDC
- Contact resistance: 30m $\Omega$  (max.)
- Insertion & Extraction force: 0.3 ~ 3.0kgs(Initial) ; 0.2 ~ 3.0kgs(After life test)
- Lift test: 5,000 cycles unloading(20 ~ 30 cycles per minute)

**S C D** □ □ □ □ □ □ □ □ □ □ □ □ **G**  
① ② ③ ④ ⑤ ⑥ ⑦ ⑧

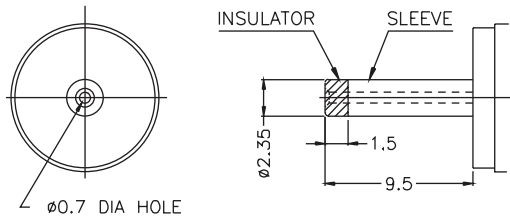
- Series No.
- Center pin diameter: "A":  $\phi$  1.3mm ; "B":  $\phi$  1.65mm ; "C":  $\phi$  2.0mm ; "D":  $\phi$  2.5mm ;  
"E":  $\phi$  1.0mm ; "F":  $\phi$  0.65mm ; "G":  $\phi$  2.95mm ;  
"J":  $\phi$  1.5mm (For SCD461/463) \*Details as drawing be confirmed
- Schematic code: "C" : Normal close ; "P" : Normal open ; "L" : Normal independent(\*For SCD412 only)  
\*\* Housing color code: "A" :Gray ; "I" : Ivory (For SCP310 only)
- Terminal plating: "T" : Tin ; "S" : Sliver (Standard) ; "M" : Misty silver ; "N" : Nickel (SCP607)
- Special option: "000" : No special option  
(i) For SCD415/420/454/452/457/458/554:  
"001" : Flat type ; "003" : Kink type ; "005" : Hook type ;  
("103" : With nut ; "003" : Without nut for SCD454/554 only)  
(ii) For SCD438/441/442/443:  
"011" : Without groove Flat type ; "031" : With groove Flat type  
"013" : Without groove Kink type ; "033" : With groove Kink type  
(iv) For SCD456/556:  
"011" : Without thread & nut Flat type ; "113" : With thread & nut Flat type  
"031" : Without thread & nut Kink type ; "133" : With thread & nut Kink type
- Housing color code: "A" : Gray ; "B" : Black ; "G" : Green ; "I" : Beige ; "R" : Red ;  
"O" : Orange ; "P" : Pink ; "U" : Blue ; "W" : White
- Housing color special option: Special code for customer designed ("00" : Standard color)
- "G" : For RoHS compliant



# DC POWER JACK ACCESSORIES

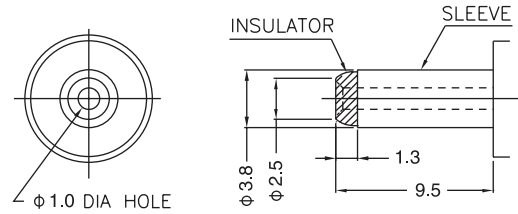
**Fig. 1 MATCHING PLUG**

(PIN 0.7Ø)



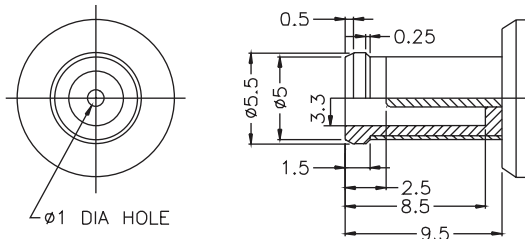
**Fig. 2 MATCHING PLUG**

(PIN 1.0Ø)



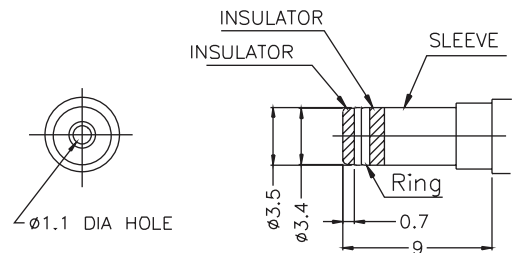
**Fig. 3 MATCHING PLUG**

(PIN 1.0Ø)



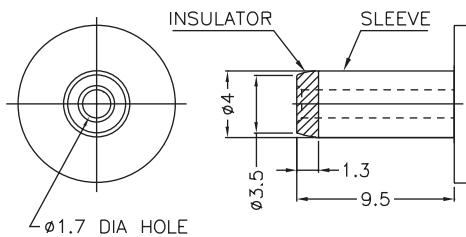
**Fig. 4 MATCHING PLUG**

(PIN 1.1Ø)



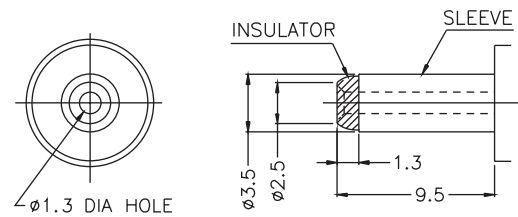
**Fig. 5 MATCHING PLUG**

(PIN 1.7Ø)



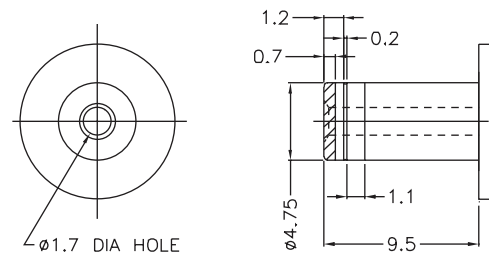
**Fig. 6 MATCHING PLUG**

(PIN 1.3Ø)



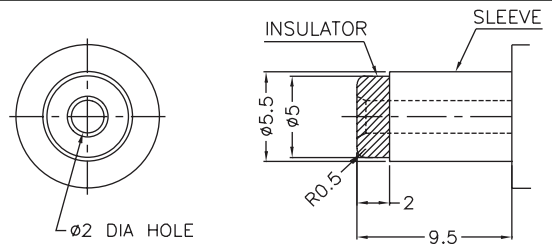
**Fig. 7 MATCHING PLUG**

(PIN 1.7Ø)



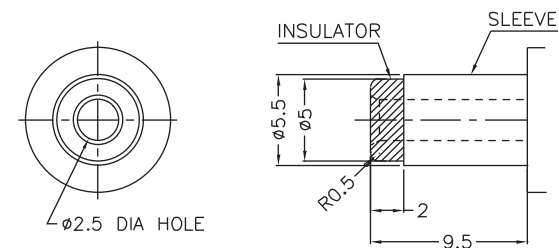
**Fig. 8 MATCHING PLUG**

(PIN 2.0Ø)



**Fig. 9 MATCHING PLUG**

(PIN 2.5Ø)



**Fig. 10 MATCHING PLUG**

(PIN 3.0Ø)

