



## Raspberry Pi 3 Model B

Single-board computer with wireless LAN and Bluetooth connectivity



Buy now

### What is a Raspberry Pi?



### Getting Started

You'll need (not included):

- Micro SD card with NOOBS
- Micro USB power supply (2.1 A)

And to use it as a desktop computer, you'll need:

- TV or monitor and HDMI cable
- Keyboard and mouse

For a step-by-step guide to getting your Pi up and running, check out our online [Getting started guide](#).

### Specification

The Raspberry Pi 3 Model B is the earliest model of the third-generation Raspberry Pi. It replaced the Raspberry Pi 2 Model B in February 2016. See also the [Raspberry Pi 3 Model B+](#), the latest product in the Raspberry Pi 3 range.

- Quad Core 1.2GHz Broadcom BCM2837 64bit CPU
- 1GB RAM
- BCM43438 wireless LAN and Bluetooth Low Energy (BLE) on board
- 100 Base Ethernet
- 40-pin extended GPIO
- 4 USB 2 ports
- 4 Pole stereo output and composite video port
- Full size HDMI
- CSI camera port for connecting a Raspberry Pi camera
- DSI display port for connecting a Raspberry Pi touchscreen display
- Micro SD port for loading your operating system and storing data
- Upgraded switched Micro USB power source up to 2.5A

### Notices

[BCM2837 package change](#)

[BCM2837 package change \(2\)](#)

### Compliance

The Raspberry Pi 3 Model B has undergone extensive compliance testing, and meets the following European standards:

- Electromagnetic Compatibility Directive (EMC) 2014/30/EU
- Restriction of Hazardous Substances (RoHS) Directive 2011/65/EU

View and download [global compliance certificates for Raspberry Pi products](#).

### Obsolescence Statement

Raspberry Pi 3 Model B will remain in production until at least January 2026

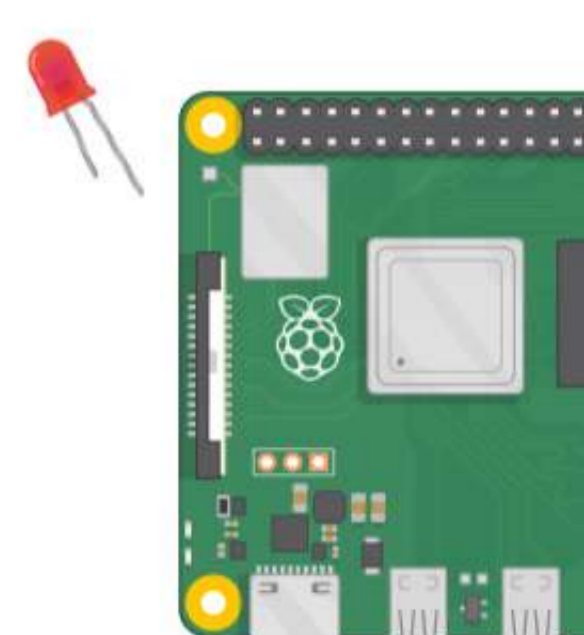
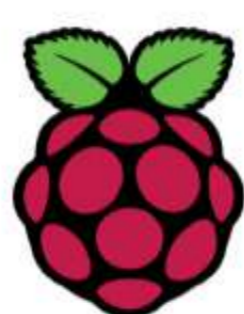
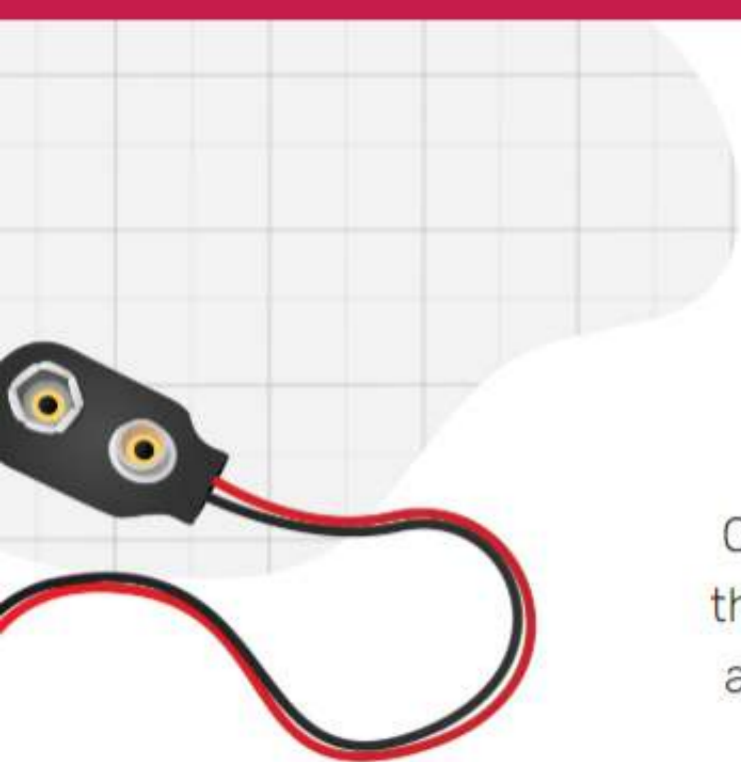
## Buy Raspberry Pi 3 Model B

Country:

Thailand

Buy for business

These companies are all Raspberry Pi Approved Resellers. You will be taken to their site to buy this product.



Our mission is to put the power of computing and digital making into the hands of people all over the world. We do this so that more people are able to harness the power of computing and digital technologies for work, to solve problems that matter to them, and to express themselves creatively.

[Donate to support our work](#)

#### ABOUT US

- About us
- Our team
- Governance
- Safeguarding
- Our supporters
- Jobs
- Contact us

#### SUPPORT

- Help
- Documentation
- Projects
- Training
- Downloads
- Research
- FAQ



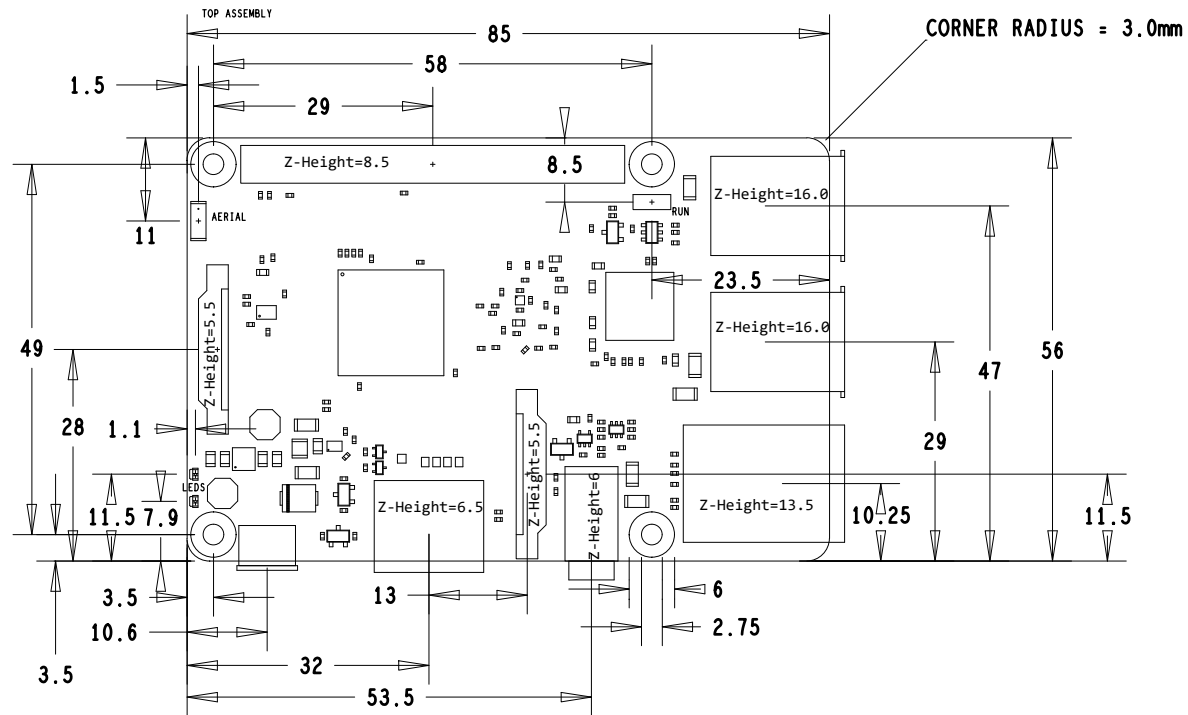
RASPBERRY PI FOUNDATION  
UK REGISTERED CHARITY 1129409

[Accessibility](#) [Privacy](#) [Cookies](#)  
[Trademark rules and brand guidelines](#)


#### SIGN UP TO OUR NEWSLETTER

Your email here

SUBSCRIBE

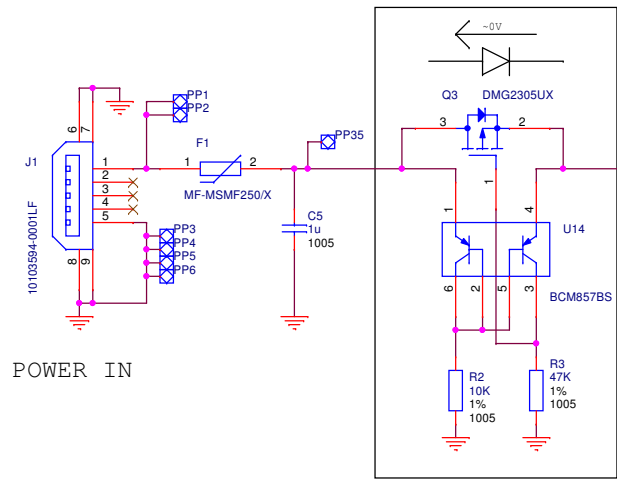


4x M2.5 MOUNTING HOLES  
 DRILLED TO 2.75 +/- 0.05mm

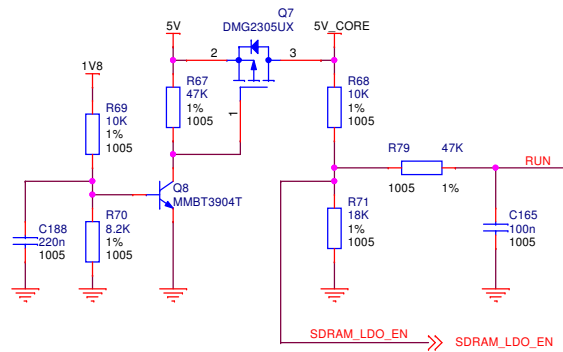
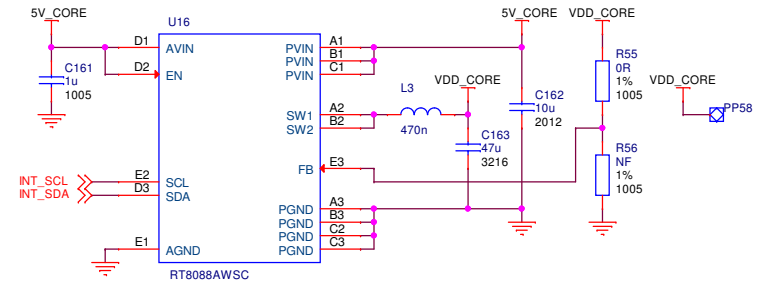
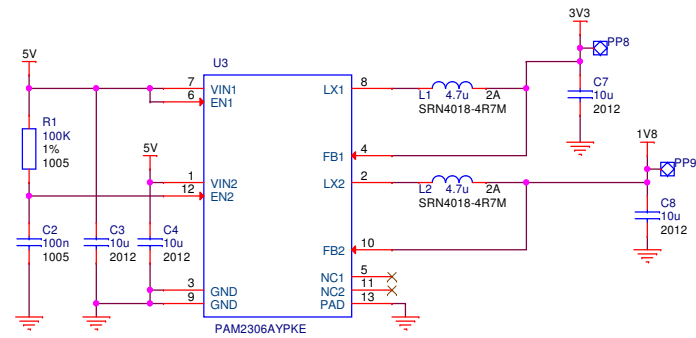


**Raspberry Pi**  
 www.raspberrypi.org  
 © Raspberry Pi 2015

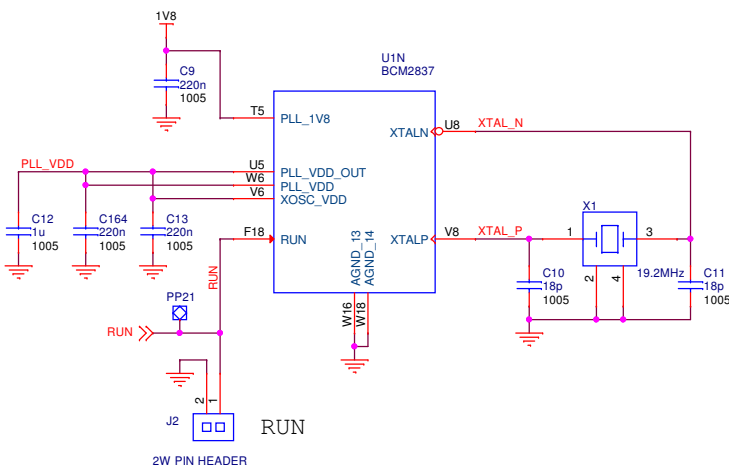
TITLE	RASPERRY PI 3 MODEL B		
DATE	06/10/2015	REF	RPI-3B-V1_2
DRAWN	James Adams	APVD	James Adams



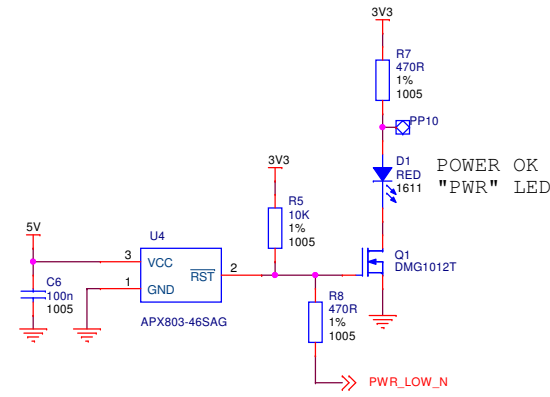
POWER IN



SDRAM\_LDO\_EN

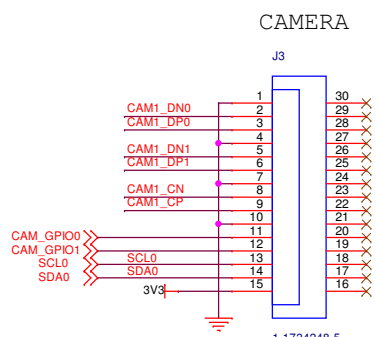


2W PIN HEADER

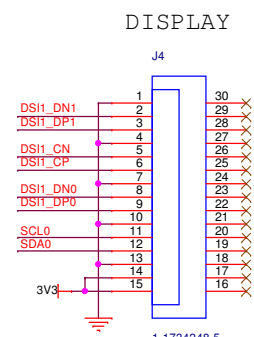


POWER OK "PWR" LED

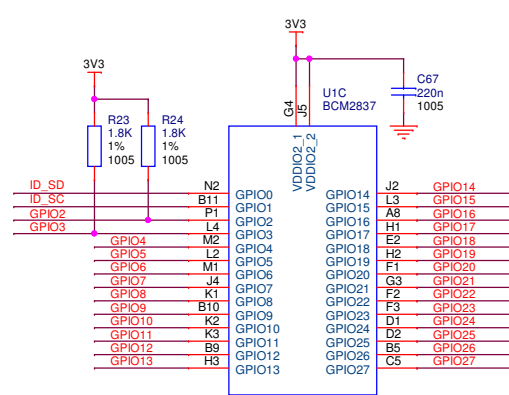
STATUS "ACT" LED



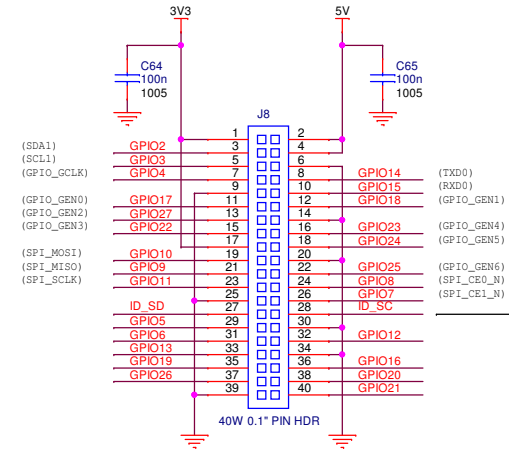
CAMERA



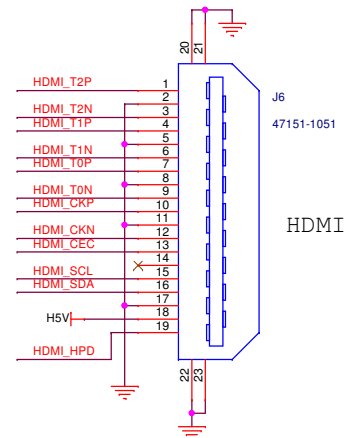
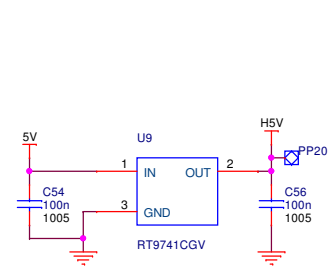
DISPLAY



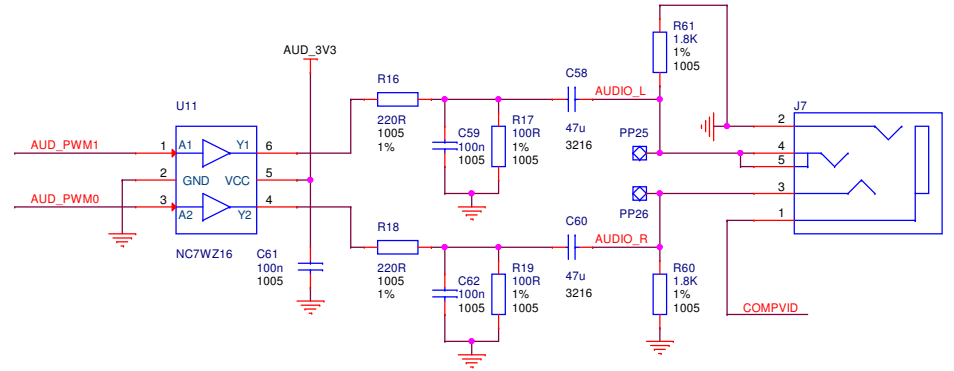
GPIO EXPANSION



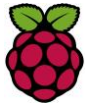
**ID\_SD and ID\_SC PINS:**  
 These pins are reserved for HAT ID EEPROM.  
 At boot time this I2C interface will be interrogated to look for an EEPROM that identifies the attached board and allows automatic setup of the GPIOs (and optionally, Linux drivers).  
**DO NOT USE** these pins for anything other than attaching an I2C ID EEPROM. Leave unconnected if ID EEPROM not required.



HDMI



A/V



## Raspberry Pi Product Change Notification

### RPI-PCN-Pi3B-002

**Notification date:**

19<sup>th</sup> December 2019

**Title:**

Change of Broadcom SoC.

**Product Identification:**

Raspberry Pi 3 Model B v.1.2 (Made in UK, Made in PRC and Made in Japan versions).

**Reason for Change:**

Move to single SoC supply chain for all Raspberry Pi 3 boards.

This PCN just adds Made in Japan to the previously issued PCN (RPI-PCN-Pi3B-001) issued in November 2018 which covered this change.

**Change Description:**

Raspberry Pi have extensively tested the new part which meets or exceeds the specification and performance of the original part:

Part Description and Ref	Original Part	New Part
Multimedia SoC (U1)	Broadcom BCM2837RIFBGT	Broadcom BCM2837RIFSBT0T

**Mechanical (Form, Fit, Function) Changes:**

New part, BCM2837RIFSBT0T has a Z height which is 1.06mm higher than the original part, BCM2837RIFBGT.

The new part, BCM2837RIFSBT0T, has a metal heat spreader.

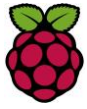
**Firmware Changes Required:**

None.

**Transition Date(s):**



The new part will be phased into manufacturing from January 2019 in China, Japan and UK factories.

There will be a transition period where both old and new units are available in the distribution channel.



**Identification Method to Distinguish Change:**

New product can be distinguished by the appearance of the SoC device (U5), with the new device being identified by the metal (silver) top of the device vs. the original part which is black.

Reference	Original Part	New Part
U5	 <p>The image shows a black Broadcom SoC chip with the following markings: BCM2837R1F8G, TN1551 P11, and 560750-15 NG.</p>	 <p>The image shows a silver Broadcom SoC chip with the following markings: BCM2837B01FSBG, TA1738 P20, and W39-G1 N2 W.</p>