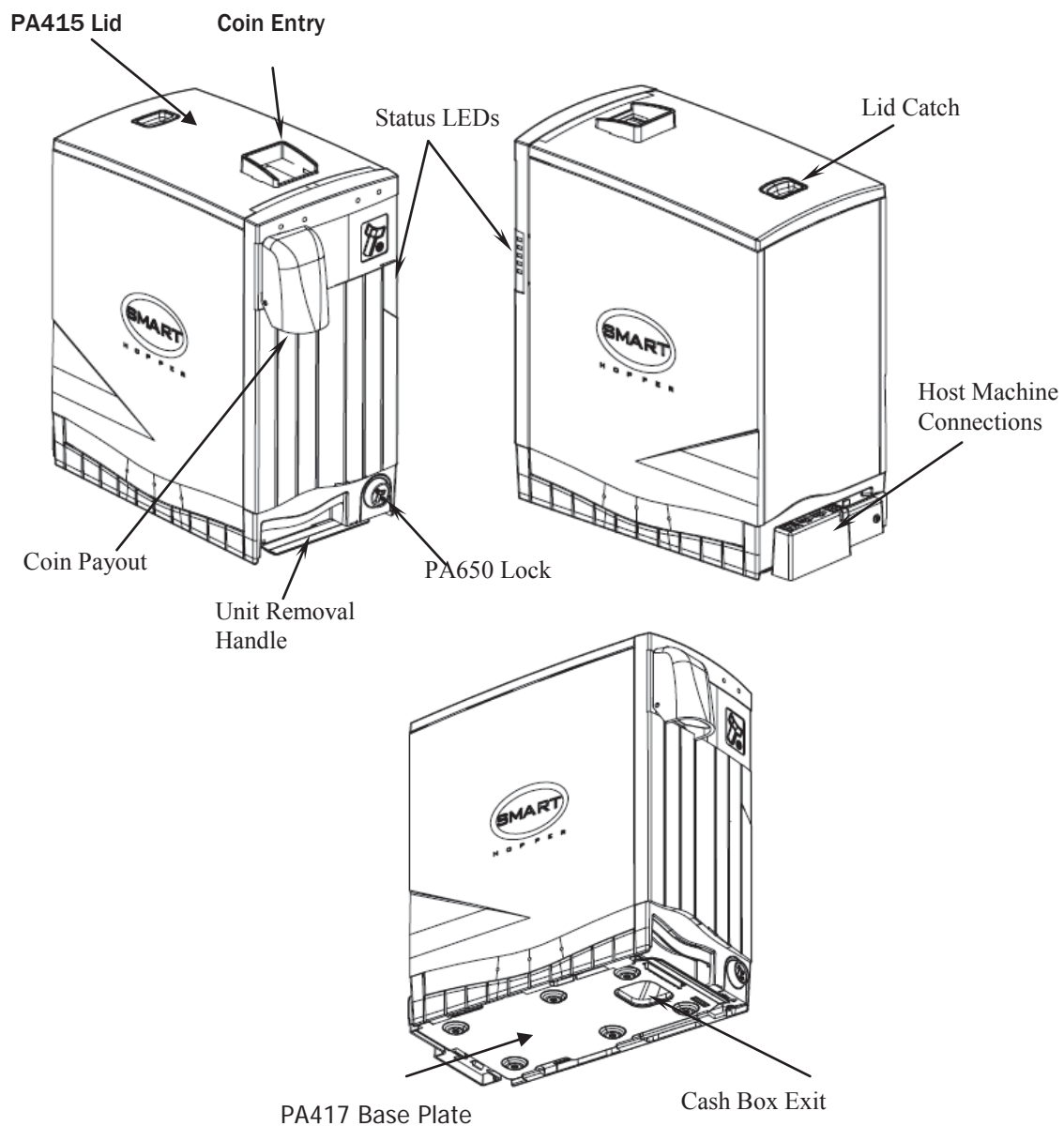


## SMART Hopper

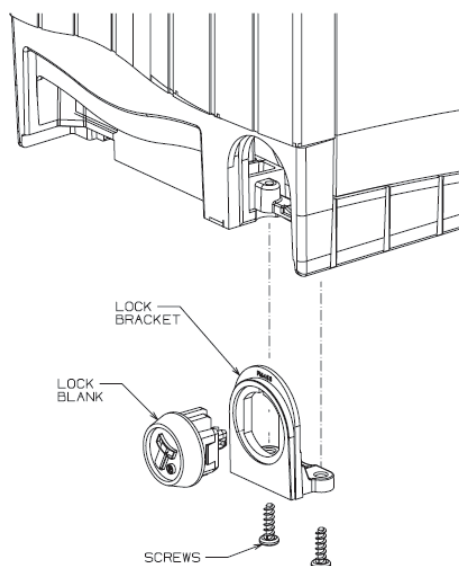
The user can obtain the following parts for the SMART Hopper:

ITL Part Number	Description
<b>PA417</b>	SMART Hopper Base plate
<b>PA415</b>	SMART Hopper Lid Assembly
<b>PA650</b>	Lock Assembly
<b>MC211</b>	Lock Cam
<b>PA650</b>	Lock Assembly



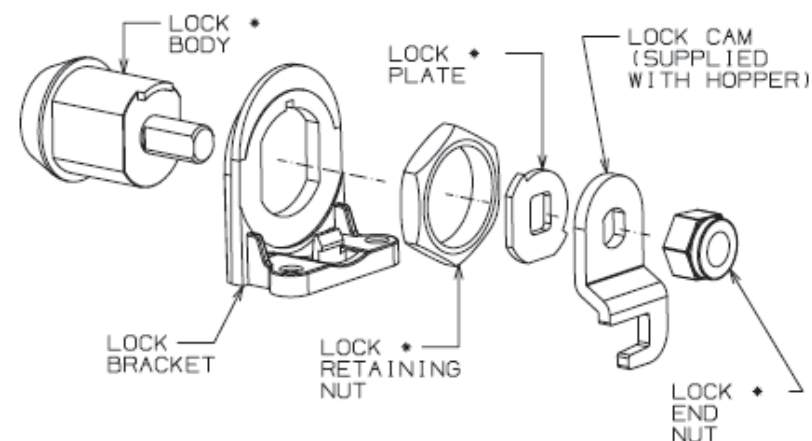
### 4.11 Lock Installation

The SMART Hopper has the option to add a lock that prevents the hopper being removed from the mounting plate. The hopper uses a standard lock PA650 which includes all the parts shown with an asterisk \*. The lock cam can be ordered from Innovative Technology, part MC211.



Remove the two screws from the base of the unit, and unclip the Lock Bracket as shown

Unclip the Lock Blank from the Lock Bracket



Assemble the lock in the order shown paying close attention to the orientation of parts

Place the Lock Bracket over the Lock Body and secure with the Retaining Nut

Place the Lock Plate and Lock Cam over the shaft of the Lock Body and secure with the Lock End Nut

Fit the assembly to the base of the hopper unit and secure with the two screws. (The Lock Blank is no longer required)