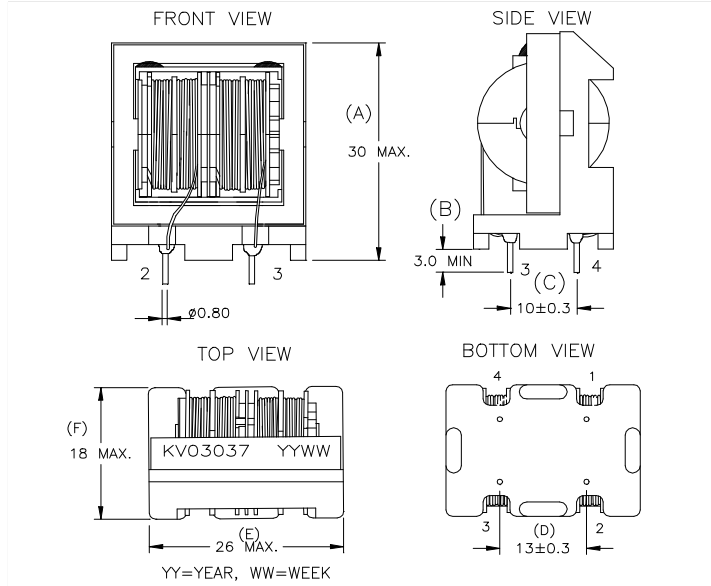




1. PHYSICAL CHARACTERISTICS :

1.1 THE FIGURE OF EXTERNAL STRUCTURE AND DIMENSION IN MILLIMETRE UNIT.



2. COMPONENTS AND MATERIAL LIST :

ITEM.	COMPONENTS.	MATERIAL.	MANUFACTURER.
1.	BOBBIN	P.B.T. (UL94V-0) (4-Sections)	CHANG CHUN PLASTICS CO.,LTD. UL NO. E59481(S). OR EQUIVALENT,
	BOBBIN	P.B.T. (UL94V-0) (2-Sections)	
2.	BASE	PHENOLIC (UL94V-0)	CHANG CHUN PLASTICS CO.,LTD. UL NO. E59481(S). OR EQUIVALENT,
3.	CORE ET-24 MA070	FERRITE	KAWATETSU OR EQUIVALENT
	CORE ET-24 TL15	FERRITE	TDG.
4.	COPPER WIRE	POLYURETHANE ENAMELLED COPPER (130 DEG.C)	THAI HITACHI ENAMEL WIRE CO.,LTD. UL NO.E62342(S) OR EQUIVALENT.

3 WINDING DESCRIPTION :



4. ELECTRICAL SPECIFICATION

- 4.1 INDUCTANCE (L) @ 10KHz, 0.1Vrms
1 – 2 = 19.90 mH Min.
4 – 3 = 19.90 mH Min.
- 4.2 HIPOTENTIAL TEST APPLY AC 1.5KVrms TRIP CURRENT 1mA 50Hz BETWEEN WIRE TO WIRE FOR 2 SECONDS.
APPLY AC 1.5KVrms TRIP CURRENT 1mA 50Hz BETWEEN WIRE TO CORE FOR 2 SECONDS.
- 4.3 PHASE CHECK FOLLOW TO SCHEMATIC DIAGRAM.

KV ELECTRONICS CO., LTD.

988 MOO 2, SOI THETSABAN BANG PU 60
 TUMBOL THAI BAN , AMPHUR MUANG
 SAMUTPRAKARN 10280
 TEL. +66(0) 2701-2969 , FAX +66(0) 2701-2966
 E-MAIL : kvea@loxinfo.co.th

CUSTOMER

ISSUE : 1
 PART NO. :
 KV NO. : 03037
 REVISION : 02
 PART NAME : LINE FILTER 19.90 mH Min.



TEST RECORD

ITEM	PIN NO.	SPEC.	SAMPLE NO.									
			1	2	3	4	5	6	7	8	9	10
INDUCTANCE (L) AT 10KHz, 0.1Vrms	1 - 2	19.90 mH Min.	38.90	33.90	27.80	35.30	26.90	38.90	34.70	29.60	38.00	33.80
	4 - 3	19.90 mH Min.	39.10	34.00	27.80	35.30	26.90	38.90	34.70	29.60	38.00	33.80
HI-POTENTIAL TEST 1mA 50Hz	APPLY AC 1.5KVrms. BETWEEN WIRE TO WIRE FOR 2 SECONDS. APPLY AC 1.5KVrms. BETWEEN WIRE TO CORE FOR 2 SECONDS.								PASSED PASSED			
PHASE CHECK FOLLOW TO SCHEMATIC DIAGRAM.								PASSED				

DIMENSION SAMPLE NO.	A	B	C	D	E	F
1	29.34	4.5	9.84	12.79	24.53	17.60
2	29.04	4.5	10.00	12.89	24.48	17.64
3	29.12	4.5	9.89	12.89	24.50	17.46
4	29.84	4.5	9.89	12.90	24.51	17.55
5	29.15	4.5	10.00	12.80	24.49	17.54
6	29.04	4.5	10.00	12.78	24.49	17.53
7	29.02	4.5	10.00	13.00	24.59	17.59
8	29.47	4.5	9.80	12.88	24.46	17.44
9	29.08	4.5	10.10	12.93	24.51	17.51
10	29.00	4.5	9.89	12.95	24.57	17.54

INSTRUMENT:

- 1.CHEN HWA CWV-902 WITHSTANDING VOLTAGE TESTER
- 2.HEWLETT PACKARD 4284A PRECISION LCR METER 20Hz-1MHz
- 3.HEWLETT PACKARD 34401A MULTIMETER
4. SWEEP FUNCTOIN GENERATOR CFG-6030
5. HAMEG DIGITAL STORAGE SCOPE HM 205-2

Test date : 22 June 2015
 Test by : Apiwat