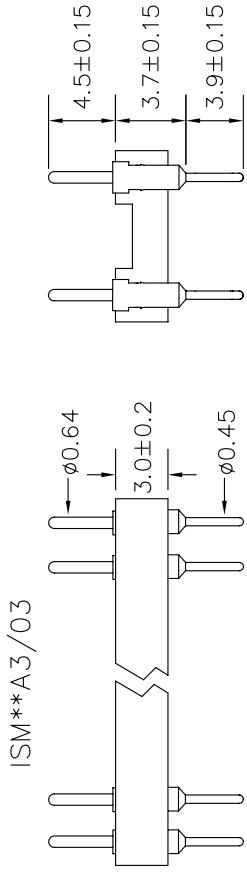
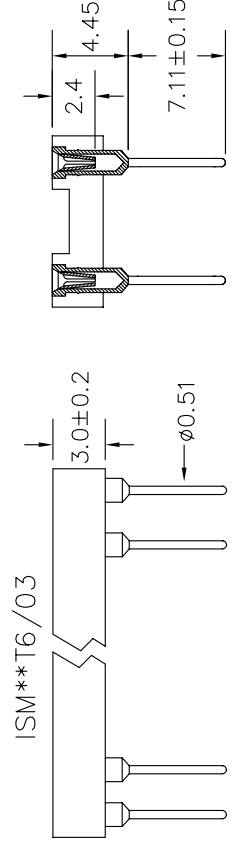
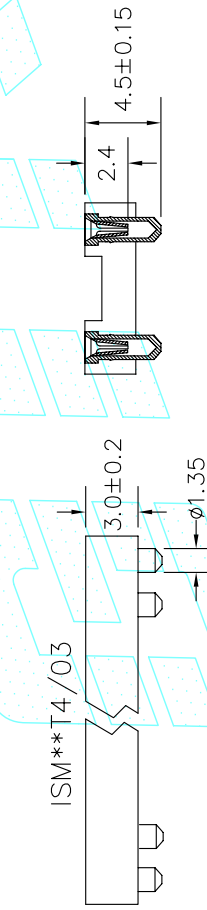
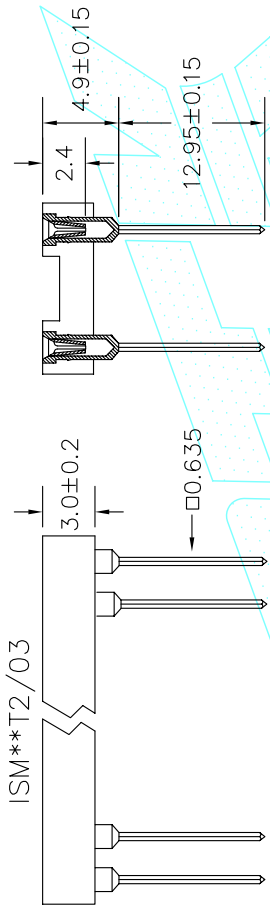
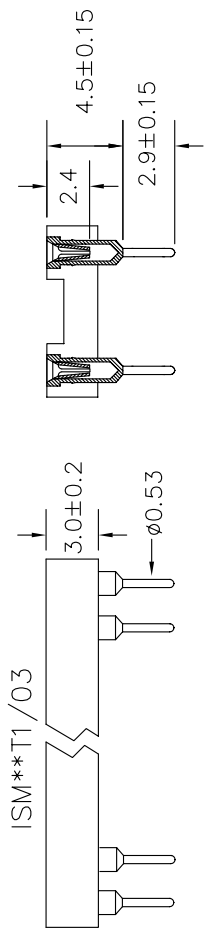
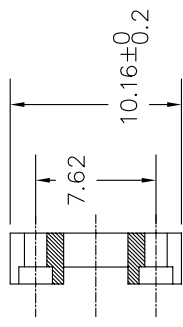


REV.	ECN NO.	DESCRIPTION	DATE
A	GTKSD0612	RELEASE	DEC.19.01

Position /03	Dimension (mm)	
	A	B
6	5.03	7.62
8	7.62	10.16
10	10.16	12.70
12	12.70	15.24
14	15.24	17.78
16	17.78	20.32
18/E	20.32	22.86
18	20.32	22.86
20	22.86	25.45
22	25.45	27.94
24	27.94	30.60
28	33.02	35.56
32	38.10	40.62

Specifications:
 Contact Resistance: 30mΩ max. at DC 100mA
 Insulator Resistance: 1000MΩ min. at DC 500V
 Current Rating: 1 AMP
 Dielectric Withstanding Voltage: AC 500V For 1 minute
 Operating Temperature: -55° C ~ +105° C
 Contact: Beryllium Copper
 Housing: PPS & 30% Glass Fiber (UL 94V-0)
 NOTE: /RH=RoHs Compliant



GOLD-TEK ELECTRIC CO., LTD.



TOLERANCE UNLESS OTHERWISE SPECIFIED		PROJECTION
LINEAR	ANGLE	 IC SOCKET MACHINED PIN ROW TO ROW: 7.62 CPART NO
X. ±	X° ±	
.X ±	.X° ±	
.XX ±	.XX° ±	
.XXX ±	.XXX° ±	
APPD		UNITS
CHKD		MM
DRAW	Too.Too.	SCALE
	DEC.19'2001	SIZE
		A4

PART NO.	ISM***03 (E) (RH)
CAD NO.	F:\Drw\PH\PH-0111
SHEET	1 OF 1

圖面編號:GTKSD0201-A(1)