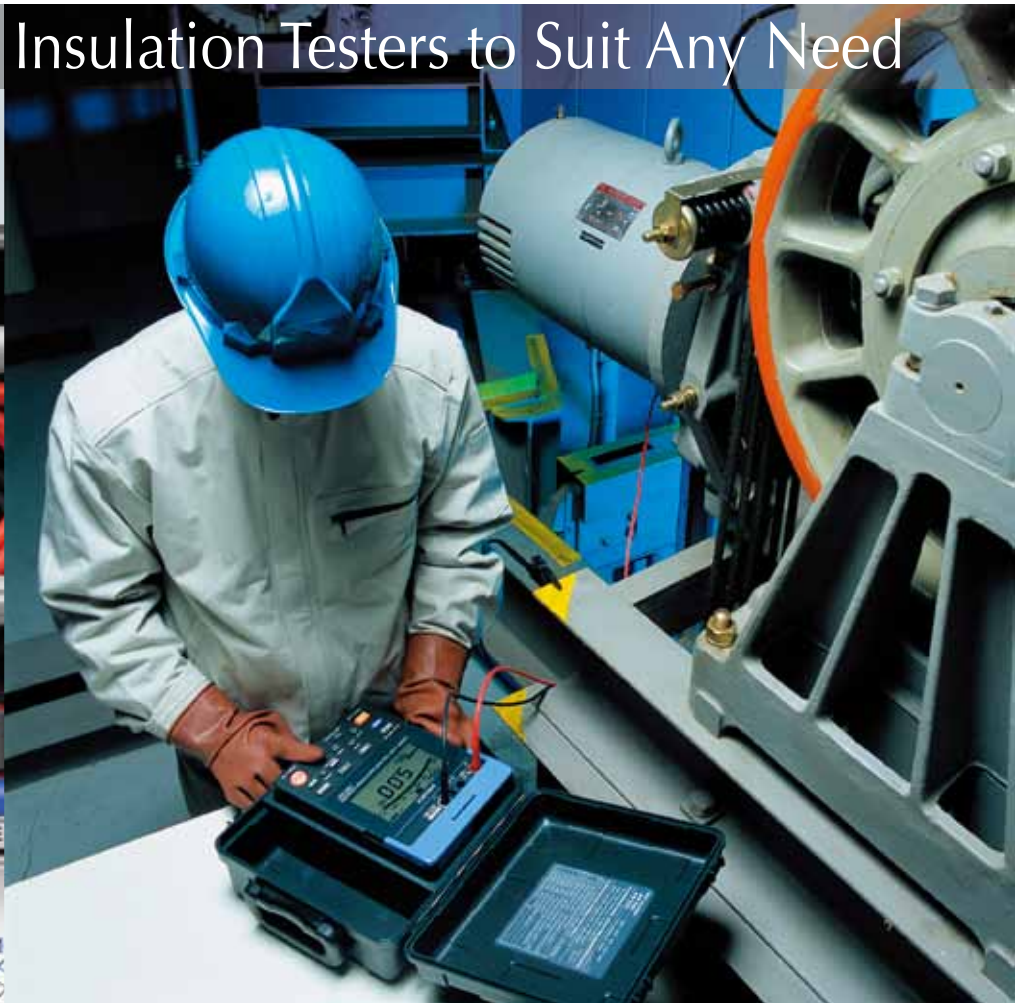


## INSULATION TESTER SERIES

Field measuring instruments



A Full Line-up of Insulation Testers to Suit Any Need



From Basic Testing to  
High Performance Analysis



ISO 9001  
JMI-0216



ISO 14001  
JQA-E-90091



[www.hioki.com](http://www.hioki.com)

HIOKI company overview, new products, environmental considerations and other information are available on our website.

# INSULATION TESTER SERIES

## Selection guide

|                                   | IR4056-20  | IR4057-20  | IR4016-20 to IR4018-20  |                          |                           | 3490   | 3455   |
|-----------------------------------|--|--|-------------------------|--------------------------|---------------------------|--|--|
| <b>Basic Specifications</b>       |  |  |                         |                          |                           |  |  |
| Display                           | Digital  | Digital (Bar graph)  | Analog Meter            |                          |                           | Analog Meter   | Digital (Bar graph)  |
|                                   |  |  | IR4016-20               | IR4017-20                | IR4018-20                 |  |  |
| Display backlight function        | ●  | ●  | ●                       | ●                        | ●                         | ●  | ●  |
| Testing voltage                   | 50V DC   | ●  | —                       | —                        | —                         | —  | —  |
|                                   | 125V DC  | ●  | —                       | —                        | —                         | —  | —  |
|                                   | 250V DC  | ●  | ●                       | —                        | —                         | ●  | ●  |
|                                   | 500V DC  | ●  | ●                       | ●                        | ●                         | ●  | ●  |
|                                   | 1000V DC   | ●  | ●                       | —                        | —                         | ●  | ●  |
|                                   | 2500V DC   | —  | —                       | —                        | —                         | —  | ●  |
|                                   | 5000V DC   | —  | —                       | —                        | —                         | —  | ●  |
| Effective maximum indicated value | 100M $\Omega$ (50V)<br>250M $\Omega$ (125V)<br>500M $\Omega$ (250V)<br>2000M $\Omega$ (500V)<br>4000M $\Omega$ (1000V) | 100M $\Omega$ (50V)<br>250M $\Omega$ (125V)<br>500M $\Omega$ (250V)<br>2000M $\Omega$ (500V)<br>4000M $\Omega$ (1000V) | 100M $\Omega$ (500V DC) | 1000M $\Omega$ (500V DC) | 2000M $\Omega$ (1000V DC) | 100M $\Omega$ (250,500V DC)<br>4000M $\Omega$ (1000V DC) | 250G $\Omega$ (250V)<br>500G $\Omega$ (500V)<br>1.00T $\Omega$ (1kV)<br>2.50T $\Omega$ (2.50kV)<br>5.00T $\Omega$ (5.00kV) |
| Low resistance                    | ●  | ●  | —                       | —                        | —                         | ●  | —  |
| AC Voltage                        | ●  | ●  | ●                       | ●                        | ●                         | ●  | ●  |
| <b>Function</b>                   |  |  |                         |                          |                           |  |  |
| Comparator                        | ●  | ●  | —                       | —                        | —                         | —  | —  |
| Memory                            | —  | —  | —                       | —                        | —                         | —  | ●  |

## INSULATION TESTER

# IR4056-20

**Our most popular model offering reading stability in medium-speed digital format**

- 5-range testing voltage 50 V/100 M $\Omega$  to 1000 V/4000 M $\Omega$
- Drop proof onto concrete from 1m (3.28 feet)
- Continuity check via 200 mA testing
- Complies with EN61557



**3 years**  
Guaranteed for 3 years

**CE**  
CAT III 600 V

### IR4056-20 SPECIFICATIONS

| Insulation resistance | Testing voltage   | 50V               | 125V              | 250V             | 500V            | 1000V            |
|-----------------------|---|-------------------|-------------------|------------------|-----------------|------------------|
|                       | Effective maximum indicated value                               | 100 M $\Omega$    | 250 M $\Omega$    | 500 M $\Omega$   | 2000 M $\Omega$ | 4000 M $\Omega$  |
|                       | First effective measurement range [M $\Omega$ ]                 | at 0.200 to 10.00 | at 0.200 to 25.00 | at 0.200 to 50.0 | at 0.200 to 500 | at 0.200 to 1000 |
|                       | Second effective measurement range [M $\Omega$ ]                | at 10.1 to 100.0  | at 25.1 to 250    | at 50.1 to 500   | at 501 to 2000  | at 1010 to 4000  |
|                       | Other measurement range [M $\Omega$ ]                           | at 0 to 0.199     |                   |                  |                 |                  |
|                       | Lower limit resistance value to maintain nominal output voltage | 0.05 M $\Omega$   | 0.125 M $\Omega$  | 0.25 M $\Omega$  | 0.5 M $\Omega$  | 1 M $\Omega$     |
|                       | Overload protection   | 600 VAC (10 s)    |                   |                  |                 | 1200 VAC (10 s)  |

### COMMON SPECIFICATIONS

|                    |   |
|--------------------|---|
| <b>resistance</b>  | Measurement range: 10.00 $\Omega$ / 100.0 $\Omega$ / 1000 $\Omega$ Measuring current: 200 mA or more (at 6 $\Omega$ or less)<br>Accuracy (after zero adjustment) : $\pm 3\%$ rdg. $\pm 2$ dgt. (0 to 0.19 $\Omega$ : $\pm 3$ dgt. 0.20 to 10.00 $\Omega$ : $\pm 3\%$ rdg. $\pm 2$ dgt.)<br>Overload protection: 600 VAC (10s, using Fuse) |
| <b>AC voltage</b>  | Display indication range: 0 to 750 V Accuracy: $\pm 2.3\%$ rdg. $\pm 8$ dgt.(up to 600V), Frequency range: 50 / 60 Hz   |
| <b>DC voltage</b>  | Display indication range: 0 to 750 V Accuracy: $\pm 1.3\%$ rdg. $\pm 4$ dgt.(up to 600V)  |
| <b>Accessories</b> | Test Lead L9787 $\times$ 1, Neck strap $\times$ 1, Instruction manual $\times$ 1, LR6 alkaline battery $\times$ 4   |

- **Functions:** Live circuit indicator, Automatic electric discharge, Automatic DC/AC detection, Comparator, Built-in battery power indicator etc.
- **Power supply:** LR6 alkaline battery  $\times$  4
- **Dimensions and Mass:** Approx. 159W $\times$ 177H $\times$ 53D mm(6.26"W $\times$ 6.97"H $\times$ 2.09"D) (excluding protrusions)  
Approx. 600g (21.2 oz) (including battery, excluding test lead)

# INSULATION TESTER SERIES

## OPTIONS

BREAKER PIN (for Models L9787) L9787-91  
 MAGNETIC ADAPTER (for Models L9788, L9787) 9804-02

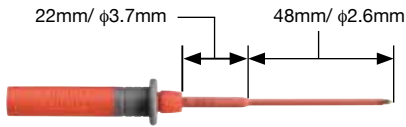
Test Lead Set with Remote Switch L9788-11  
 Test Lead with Remote Switch(Red) L9788-10

Breaker Pin L9788-92  
 Tip Pin L9788-90

● Refer to P.6 →

### BREAKER PIN

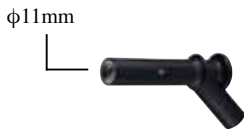
**L9787-91** (for Model L9787)



Extra long tips extend deep into the breaker openings for more reliable testing

### MAGNETIC ADAPTER ( L9787 / L9788 Option )

**9804-02**



Magnetic tip for use with the standard Models L9788-11, L9788-10, L9787 (generally compatible with M6 pan screws)

## Accessories

### TEST LEAD L9787 (1.2m)

Conforms to safety standard IEC61010-031 (revised) for hand-held probes



**Detachable!**

included as a standard accessory  
 (This sleeve cannot be attached to previous products)

When measuring in a CAT III environment, be sure to attach the sleeve to the test leads.

## Instant judgment

Since the IR4056-20 and IR4057-20 generate judgments as soon as the test lead makes contact, it is possible to make a rapid series of measurements in the manner of a continuity check.



\*In some cases, the capacitance component may prevent a judgment from being made until charging completes.

## Identify PASS/FAIL using light and sound

The IR4056-20 and IR4057-20 notify the operator of pass and fail judgments using a beeping sound, LCD light, and comparator indicator on the test lead with remote control switch (optional accessory), allowing determinations of compliance to be made without looking at the instrument.

### PASS

When the measured value is greater than or equal to the reference value\*

**Short beep**



No change



Option  
Green

### FAIL

When the measured value is less than the reference value\*

**Continuous tone**



Red



Option  
Red

\*Insulation resistance measurement

## Integrated hard case with sliding cover



With cover closed

**Compact storage without disconnecting test probes**

## Backlight (White LED)



**A backlight makes it possible to work in dark or poorly lit locations.**

# INSULATION TESTER SERIES

## INSULATION TESTER

# IR4057-20

**3 years**  
Guaranteed for 3 years

**CE**  
CAT III 600 V



**Quick response comparator offering reading stability in high-speed digital format**

- 5-range testing voltage 50 V/100 MΩ to 1000 V/4000 MΩ
- Stable & high-speed digital readings, response time at PASS/ FAIL decision 0.3 second
- Drop proof onto concrete from 1m (3.28 feet)
- Bright LED luminous LCD, Test lead with bright LED lamp to illuminate near hand (Option L9788-11 or L9788-10)
- Continuity check via 200 mA testing
- Built in AC/DC voltage meter, useful for testing solar power generation systems and electric vehicles
- Complies with EN61557

| Insulation resistance | Testing voltage   | 50V                            | 125V              | 250V             | 500V            | 1000V            |
|-----------------------|---|--------------------------------|-------------------|------------------|-----------------|------------------|
|                       | Effective maximum indicated value                               | 100 MΩ                         | 250 MΩ            | 500 MΩ           | 2000 MΩ         | 4000 MΩ          |
|                       | First effective measurement range [MΩ]                          | at 0.200 to 10.00              | at 0.200 to 25.00 | at 0.200 to 50.0 | at 0.200 to 500 | at 0.200 to 1000 |
|                       | Second effective measurement range [MΩ]                         | at 10.1 to 100.0               | at 25.1 to 250    | at 50.1 to 500   | at 501 to 2000  | at 1010 to 4000  |
|                       | Other measurement range [MΩ]                                    | ±2 %rdg., ±6dgt. at 0 to 0.199 |                   |                  |                 |                  |
|                       | Lower limit resistance value to maintain nominal output voltage | 0.05 MΩ                        | 0.125 MΩ          | 0.25 MΩ          | 0.5 MΩ          | 1 MΩ             |
|                       | Overload protection   | 600 VAC (10 s)                 |                   |                  |                 | 1200 VAC (10 s)  |

### COMMON SPECIFICATIONS

|                    |  |
|--------------------|--|
| <b>resistance</b>  | Measurement range: 10.00 Ω / 100.0 Ω / 1000 Ω Measuring current: 200 mA or more (at 6 Ω or less )<br>Accuracy (after zero adjustment) : ±3%rdg. ±2dgt. (0 to 0.19 Ω: ±3dgt. 0.20 to 10.00 Ω: ±3%rdg. ±2dgt.)<br>Overload protection: 600 VAC (10s, using Fuse) |
| <b>AC voltage</b>  | Display indication range: 0 to 750 V Accuracy: ±2.3 %rdg. ±8 dgt.(up to 600V), Frequency range: 50 / 60 Hz   |
| <b>DC voltage</b>  | Display indication range: 0 to 750 V Accuracy: ±1.3 %rdg. ±4 dgt.(up to 600V)  |
| <b>Accessories</b> | Test Lead L9787 × 1, Neck strap × 1, Instruction manual × 1, LR6 alkaline battery × 4  |

- **Functions:** Live circuit indicator, Automatic electric discharge, Automatic DC/AC detection, Comparator, Built-in battery power indicator etc.
- **Power supply:** LR6 alkaline battery × 4
- **Dimensions and Mass:** Approx. 159W×177H×53D mm(6.26"W×6.97"H×2.09"D) (excluding protrusions)  
Approx. 640g (22.6 oz) (including battery, excluding test lead)

### OPTIONS

BREAKER PIN (for Models L9787) L9787-91

Test Lead Set with Remote Switch L9788-11

Breaker Pin L9788-92

MAGNETIC ADAPTER (for Models L9788, L9787) 9804-02

Test Lead with Remote Switch(Red) L9788-10

Tip Pin L9788-90

● Refer to P.6 →

## Double Action for Safety

### IR4056-20/IR4057-20 500 V/1000 V range only



Set the function key to either 500 V or 1000 V.



Press the flashing "RELEASE" key.

# INSULATION TESTER SERIES

## ANALOG MΩ HiTESTER IR4016-20 to IR4018-20

Reliable and Efficient Insulation Testing in the field

- Single range insulation resistance meters
- Luminous scale lets you see better in the dark
- Drop proof (1m)
- Complies with EN61557

### Common SPECIFICATIONS

Discharge function : effective

Power supply : Rated power voltage: 1.5 VDC × 4,  
AA alkaline (LR6) battery × 4

Dimensions and mass : Approx. 159W × 177H × 53D mm, 610 g  
(6.26"W × 6.97"H × 2.09"D, 21.5 oz.)  
including battery, not including test lead

Accessories : TEST LEAD L9787 × 1, Shoulder strap × 1

Safety : EN61010, EMC EN61326, EN61557-1/-2



Guaranteed for 3 years



CAT III 600 V



### OPTIONS

- Refer to P.3 →

BREAKER PIN (for Models L9787) L9787-91

MAGNETIC ADAPTER (for Models L9788, L9787) 9804-02

- Refer to P.6 →

Test Lead Set with Remote Switch L9788-11

Breaker Pin L9788-92

Test Lead with Remote Switch(Red) L9788-10

Tip Pin L9788-90

### SPECIFICATIONS

| Model  | IR4016-20  | IR4017-20   | IR4018-20  |
|--|--|---|--|
| Testing voltage  | 500 V DC   | 500 V DC  | 1000 V DC  |
| Effective maximum indicated value  | 100 MΩ   | 1000 MΩ   | 2000 MΩ  |
| First effective measurement range and tolerances                               | ±5 % of scale indication<br>at 0.1 to 50 MΩ                  | ±5 % of scale indication<br>at 1 to 500 MΩ                  | ±5 % of scale indication<br>at 2 to 1000 MΩ                |
| Second effective measurement range and tolerances                              | ±10 % of scale indication<br>at 0.01 to 0.1 MΩ, 50 to 100 MΩ | ±10 % of scale indication<br>at 0.5 to 1 MΩ, 500 to 1000 MΩ | ±10 % of scale indication<br>at 1 to 2 MΩ, 1000 to 2000 MΩ |
| Lower limit measurement resistance value to be maintained reted output voltage | 0.5 MΩ   | 0.5 MΩ  | 1 MΩ   |
| Open circuit voltage   | 1 to 1.2 times of rated output voltage                       |   |  |
| Rated current  | 1mA (Tolerance: 1 to 1.2 times of the rating value)          |   |  |
| AC voltage range   | 0 to 600 V (50/60 Hz), ±5% of maximum scale value accuracy   |   |  |
| Input resistance   | 500 kΩ or more (50/60Hz)                                     |   |  |

## Advanced Features (IR4016-20 to IR4018-20 and 3490)

### Flip the Cover



Quick and easy storage without disconnecting the leads

### Luminous Scale



See better in the dark

### Bright LED

- Work safely knowing that when the RED is lit, live wires, high voltage or electrical discharge is present
- The super bright light at the tip of the optional 9788 Test Leads adds to efficiency

### Check for Live Circuits



The LIVE CIRCUIT LED will light up in red whenever the voltage exceeds 20V AC between the LINE and EARTH terminals, and when at least 20V DC is still remaining during the auto discharge.



# INSULATION TESTER SERIES

## ANALOG MΩ HiTESTER

# 3490

**Insulation Testing in 3 Easy Steps  
Flip the Cover, Select Range & Test**

- 3-range testing voltage, Insulation meter
- Luminous scale
- Check for live circuits
- Check for the battery status
- Complies with EN 61557



CAT III 600 V



### SPECIFICATIONS

|                                      |   |                         |  |
|--------------------------------------|---|-------------------------|--|
| <b>Testing voltage</b>               | 250 V DC  | 500 V DC                | 1000 V DC  |
| <b>Rated resistance</b>              | 100 MΩ  | 100 MΩ                  | 4000 MΩ  |
| <b>Accuracy</b>                      | ±5 % of indicated value   | ±5 % of indicated value | ±5 % of indicated value  |
| <b>1st effective measuring range</b> | 0.05 to 50 MΩ   | 0.05 to 50 MΩ           | 2 to 1000 MΩ   |
| <b>Rated measurement current</b>     | 1 mA  |                         |  |
| <b>Low resistance</b>                | 3 Ω range, ±0.09 Ω accuracy,<br>200 mA DC measuring current,<br>4.1 to 6.9 V open-circuit voltage |                         | 30 Ω range, ±0.9 Ω accuracy,<br>20 mA DC measuring current,<br>4.1 to 6.9 V open-circuit voltage |
| <b>AC voltage range</b>              | 0 to 600 V (50/60 Hz), ±5 % of maximum scale value accuracy                                       |                         |  |
| <b>Functions</b>                     | Luminous scale, Battery status check, Live circuit check  |                         |  |
| <b>Power supply</b>                  | AA alkaline (LR6) battery × 4, Continuous use: 20 hours (at 500 V range, no load)                 |                         |  |
| <b>Dimensions and mass</b>           | 159 mm (6.26 in) W × 177 mm (6.97 in) H × 53 mm (2.09 in) D, 610g (21.5 oz.)                      |                         |  |
| <b>Accessories</b>                   | TEST LEAD L9787 × 1, Operation manual × 1, Shoulder strap × 1, AA alkaline battery (LR6) × 4      |                         |  |

### OPTIONS

BREAKER PIN (for Models L9787) L9787-91

MAGNETIC ADAPTER (for Models L9788, L9787) 9804-02

- Refer to P.3 →

Test Lead Set with Remote Switch L9788-11

Test Lead with Remote Switch(Red) L9788-10

- Refer to P.6 →

Breaker Pin L9788-92

Tip Pin L9788-90

#### COMPLETE TEST LEAD WITH REMOTE CONTROL SWITCH L9788-11 (1.2m)

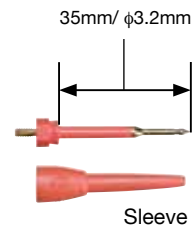


#### TEST LEAD WITH REMOTE CONTROL SWITCH L9788-10 (1.2m)



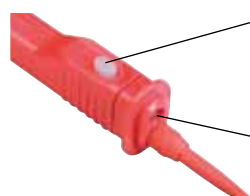
#### TIP PIN L9788-90

(for Model L9788-10)



When measuring in a CAT III environment, be sure to attach the sleeve to the test leads.

#### TEST LEAD WITH REMOTE CONTROL SWITCH



#### REMOTE CONTROL SWITCH

- Start and stop the test at the touch of a button
- Test for insulation resistance single-handedly

#### LED LIGHT

- Illuminate the test location with a bright white LED

# HIGH VOLTAGE INSULATION TESTER

## HIGH VOLTAGE INSULATION HiTESTER 3455

**Maximum 5kV Test Voltage - Up to 5TΩ of Insulated Resistance Testing**  
**Safely evaluate the insulation characteristics of high voltage transformers, motors and cables**

- Wide voltage range (250V to 5kV) for maximum 5TΩ of insulation resistance measurements
- Automatically calculate and display the PI (Polarization Index) and DAR (Dielectric Absorption Ratio) for all types of insulation evaluations
- Temperature compensation to accurately respond to variations in insulation material
- Internal memory stores 100 blocks of manually recorded data and 10 sets of log data
- USB interface, compact rugged case, and safe design



### SPECIFICATIONS

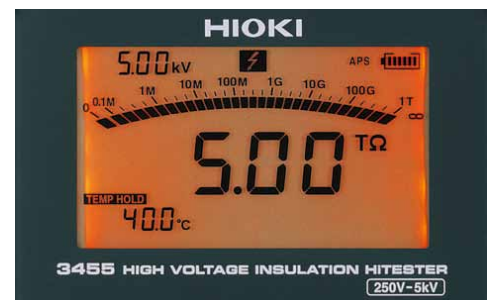
|                            |  |
|----------------------------|--|
| <b>250 V range</b>         | 0.00 MΩ to 250 GΩ,<br>Accuracy :±5 % rdg. ±5 dgt. (0 to 2.50 GΩ)<br>±20 % rdg. ±5 dgt. (2.50 to 250 GΩ)  |
| <b>500 V range</b>         | 0.00 MΩ to 500 GΩ ,<br>Accuracy :±5 % rdg. ±5 dgt. (0 to 5.00 GΩ)<br>±20 % rdg. ±5 dgt. (5.00 to 500 GΩ)   |
| <b>1 kV range</b>          | 0.00 MΩ to 1.00 TΩ ,<br>Accuracy :±5 % rdg. ±5 dgt. (0 to 10.0 GΩ)<br>±20 % rdg. ±5 dgt. (10.0 to 500 GΩ)<br>±30 % rdg. ±50 dgt. (500 G to 1.00 TΩ)  |
| <b>2.5 kV range</b>        | 0.00 MΩ to 2.50 TΩ,<br>Accuracy :±5 % rdg. ±5 dgt. (0 to 25.0 GΩ)<br>±20 % rdg. ±5 dgt. (25.0 to 500 GΩ)<br>±30 % rdg. ±50 dgt. (500 G to 2.50 TΩ)   |
| <b>5 kV range</b>          | 0.00 MΩ to 5.00 TΩ ,<br>Accuracy :±5 % rdg. ±5 dgt. (0 to 50.0 GΩ)<br>±20 % rdg. ±5 dgt. (50.0 to 500 GΩ)<br>±30 % rdg. ±50 dgt. (500 G to 5.00 TΩ)  |
| <b>Functions</b>           | Insulation resistance mode: Data memory(100 data), measurement value hold, average, bar graph display, timer etc.<br>Leak current: (1.00nA to 1.20mA), Temperature: (-10°C to 70°C)<br>Voltage: (DC±50V to 1kV AC 50V to 750V)<br>All measurement mode: live wire warning, battery indicators, auto power save |
| <b>Interfaces</b>          | USB ver 2.0 (full speed)   |
| <b>Display</b>             | LCD with backlight   |
| <b>Power supply</b>        | LR6(AA) alkaline batteries × 6, BATTERY PACK 9459, AC ADAPTER 9753   |
| <b>Dimensions and mass</b> | Approx.260 W × 251 H × 120 D mm (10.2"W × 9.9"H × 4.7"D)<br>Approx.2.8 kg (98.8 oz.)   |
| <b>Accessories</b>         | TEST LEAD (red, 3m) 9750-01 ×1<br>TEST LEAD (black, 3m) 9750-02 ×1<br>TEST LEAD (blue 3m) 9750-03 ×1<br>ALLIGATOR CLIP (red) 9751-01 ×1<br>ALLIGATOR CLIP (black) 9751-02 ×1<br>ALLIGATOR CLIP (blue) 9751-03 ×1<br>LR6(AA) Alkaline batteries ×6, USB CABLE ×1  |

TEST LEAD (red, black, blue 3m) 9750-01 to 03



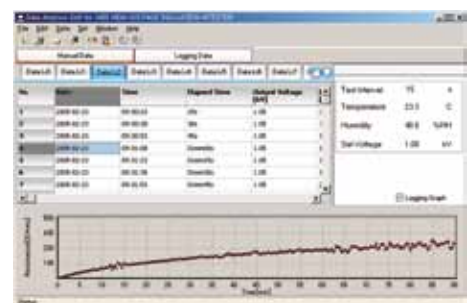
ALLIGATOR CLIP (red, black, blue) 9751-01 to 03

### Large, Easy to Read Display



The display is backlit and features a logarithmic bar graph similar to an analog type indicator in addition to the digital readout.

### USB Interface



Easily transfer data to a PC via the USB interface using our free PC application software. The software also features a convenient report creation function.

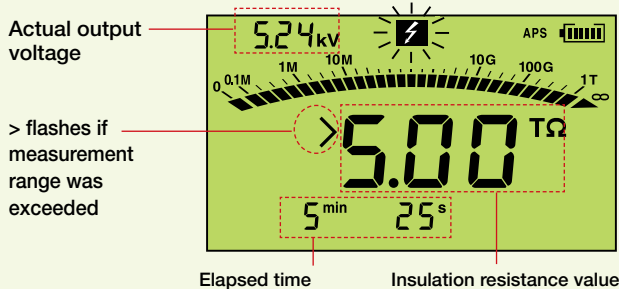
# HIGH VOLTAGE INSULATION TESTER

## Primary Measurement Functions

### Insulation resistance measurement

Measurement voltage is selectable from 250 V, 500 V, 1.00 kV, 2.50 kV, and 5.00 kV. More finely graded settings are also possible. When measurement is completed, the unit shows the insulation resistance value, test voltage (setting and actual output), leakage current, DAR, PI, and elapsed time.

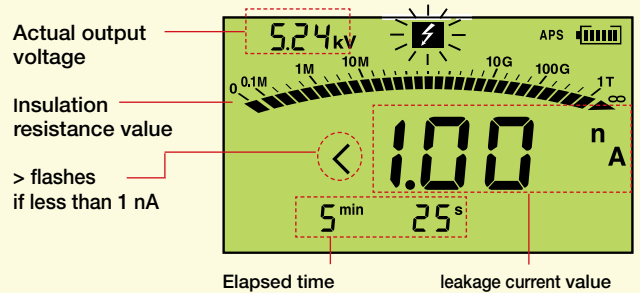
Insulation resistance measurement display



### Leakage current display

When measuring insulation resistance, the instrument can be switched to display leakage current. This is possible before, during, and after measurement.

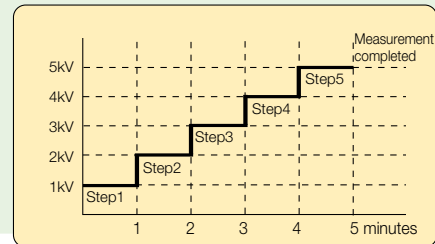
Display of leakage current during measurement



### Step voltage test

In this type of test, the voltage is gradually raised and the insulation resistance and leakage current change is measured. Two different step settings are available: 500 V → 1 kV → 1.5 kV → 2 kV → 2.5 kV and 1 kV → 2 kV → 3 kV → 4 kV → 5 kV. The test time for each step can also be selected.

STEP 5.0 kV step voltage test



### OPTIONS

|                          |         |
|--------------------------|---------|
| TEMPERATURE SENSOR (1m)  | 9631-01 |
| TEMPERATURE SENSOR (6cm) | 9631-05 |
| TEST LEAD (red, 10m)     | 9750-11 |
| TEST LEAD (black, 10m)   | 9750-12 |
| TEST LEAD (blue, 10m)    | 9750-13 |
| BATTERY PACK             | 9459    |
| AC ADAPTER               | 9753    |

TEMPERATURE SENSOR 9631-01  
Molded plastic, thermistor type

TEMPERATURE SENSOR 9631-05  
Molded plastic, thermistor type



BATTERY PACK 9459

AC ADAPTER 9753



Note: Company names and Product names appearing in this catalog are trademarks or registered trademarks of various companies.

# HIOKI

HIOKI E. E. CORPORATION

#### HEADQUARTERS:

81 Koizumi, Ueda, Nagano, 386-1192, Japan  
TEL +81-268-28-0562 FAX +81-268-28-0568  
http://www.hioki.com / E-mail: os-com@hioki.co.jp

#### HIOKI USA CORPORATION:

TEL +1-609-409-9109 FAX +1-609-409-9108  
http://www.hiokiusa.com / E-mail: hioki@hiokiusa.com

HIOKI (Shanghai) SALES & TRADING CO., LTD.:  
TEL +86-21-63910090 FAX +86-21-63910360  
http://www.hioki.cn / E-mail: info@hioki.com.cn

DISTRIBUTED BY

HIOKI INDIA PRIVATE LIMITED:  
TEL +91-124-6590210 FAX +91-124-6460113  
E-mail: hioki@hioki.in

HIOKI SINGAPORE PTE. LTD.:  
TEL +65-6634-7677 FAX +65-6634-7477  
E-mail: info@hioki.com.sg

HIOKI KOREA CO., LTD.:  
TEL +82-42-936-1281 FAX +82-42-936-1284  
E-mail: info-kr@hioki.co.jp