

Specifications

Insulation Resistance: 1,000MΩ min. at 500V DC
 Withstanding Voltage: 1,000V AC rms for 1 minute
 Contact Resistance: 30mΩ max. at 10mA
 Current Rating: 1A
 Operating Temp. Range: -20°C to +105°C

Materials and Finish

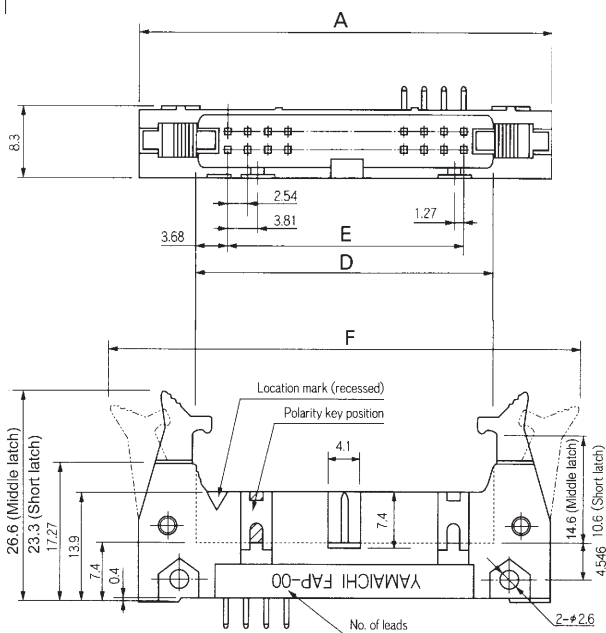
Housing: PBT, UL94V-0 rated
 Contacts: Copper Alloy
 Plating: Contacts - Gold over Nickel
 Solder Terminals - Tin over Nickel

Features

- 2.54 mm contact pitch connectors for MIL standard
- Variations include latch header plugs, box header plugs, and flat cable gang wired sockets
- Two types (short latch and middle latch) of latch header plugs available



Outline Dimensions



Part Number (Details)

FAP - 3401 - 1 1 0 * - 2 - 0 * S

Series (plug)

No. of Leads

Housing Types:

- 1=MIL Standard key slot (plus central key slot on 16 or more leads)
- 2=Central key slot (10 leads only)
- 4=With 2 key slots (50, 60, 64 leads)

Latch Types:

- 0 = Without Latches
- 1 = Short Latches (Height = 23.3mm, mating socket is without strain relief)
- 2 = Middle Latches (Height = 26.6mm, mating socket is with strain relief)

Terminal Types:

- 02 = Right Angle Solder Dip
- 04 = Straight Solder Dip

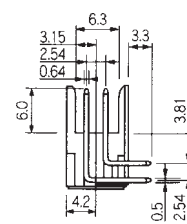
Housing Colour: 1 = Black, 2 = Blue (Standard)

0 = Mating Cables (1.27 pitch):
 AWG 28 Stranded Wire or AWG 30 Solid Wire

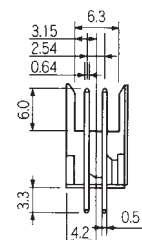
Contact Plating: A = Gold (0.76µm over Ni 2.5~4.5µm)
 B = Gold (0.3~0.5 µm over Ni 2.5~4.5µm)

Solder Terminal Plating: S = Tin (2~4µm over Ni 2.5~4.5µm)

Contact Details and Terminal Types



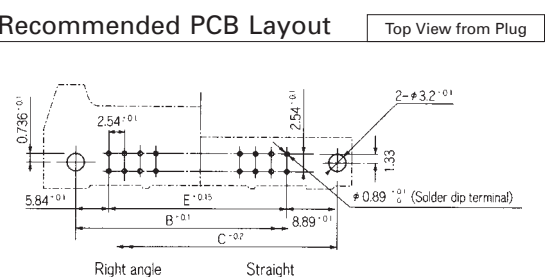
Type 02 - Right angle solder dip terminal



Type 04 - Straight solder dip terminal

| Part No. | No. of Leads | A | B | C | D | E | F _(max.) |
|-------------------|--------------|--------|-------|-------|-------|-------|---------------------|
| FAP-1001-**0*-0*S | 10 | 32.00 | 21.84 | 27.94 | 17.52 | 10.16 | 48.52 |
| FAP-1401-**0*-0*S | 14 | 37.20 | 26.84 | 32.12 | 23.34 | 15.24 | 52.24 |
| FAP-1601-**0*-0*S | 16 | 39.62 | 29.46 | 35.56 | 25.14 | 17.78 | 56.14 |
| FAP-2001-**0*-0*S | 20 | 44.70 | 34.54 | 40.64 | 30.22 | 22.86 | 61.22 |
| FAP-2601-**0*-0*S | 26 | 52.32 | 42.16 | 48.26 | 37.84 | 30.48 | 68.84 |
| FAP-3001-**0*-0*S | 30 | 57.40 | 47.24 | 53.42 | 42.92 | 35.56 | 73.92 |
| FAP-3401-**0*-0*S | 34 | 62.48 | 52.32 | 58.42 | 48.00 | 40.64 | 79.00 |
| FAP-4001-**0*-0*S | 40 | 70.10 | 59.94 | 66.04 | 55.62 | 48.26 | 86.62 |
| FAP-5001-**0*-0*S | 50 | 82.80 | 72.64 | 78.74 | 68.32 | 60.96 | 99.32 |
| FAP-6001-**0*-0*S | 60 | 95.50 | 85.34 | 91.44 | 81.02 | 73.66 | 112.02 |
| FAP-6401-**0*-0*S | 64 | 100.60 | 90.42 | 96.52 | 86.10 | 78.74 | 117.10 |

Recommended PCB Layout



Specifications

Insulation Resistance: 1,000MΩ min. at 500V DC
 Withstanding Voltage: 1,000V AC rms for 1 minute
 Contact Resistance: 30mΩ max. at 10mA
 Current Rating: 1A
 Operating Temp. Range: -20°C to +105°C

Materials and Finish

Housing: PBT, UL94V-0 rated
 Contacts: Copper Alloy
 Plating: Contacts - Gold over Nickel
 Solder Terminals - Tin over Nickel

Features

⇒ 2.54mm contact pitch dual port connector for MIL standard

Part Number (Details)

FAP - 50 01.KS-7876 - *

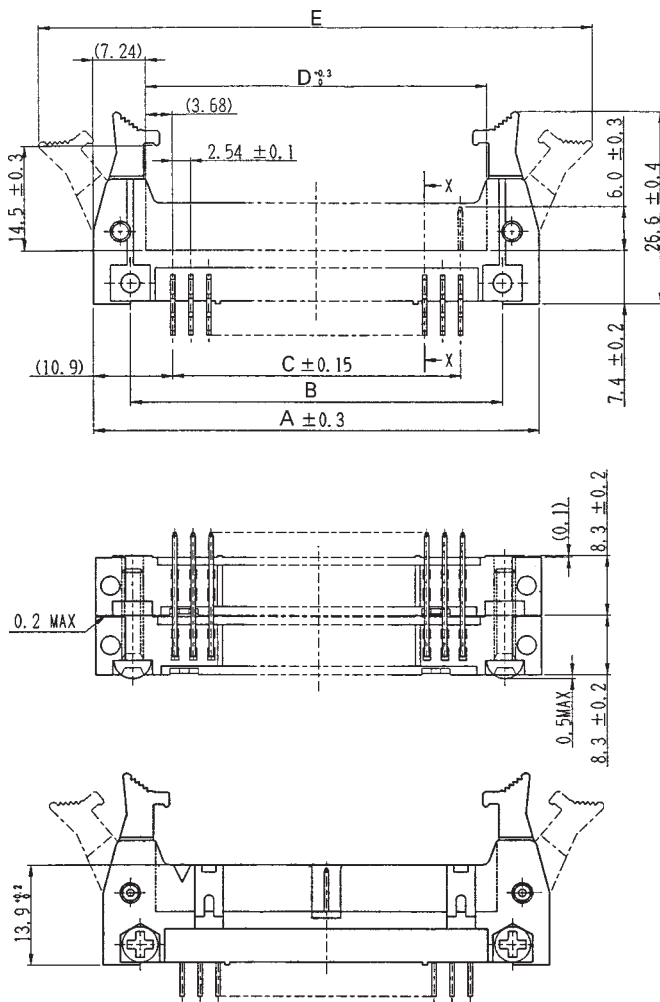
Series (plug)

No. of Leads

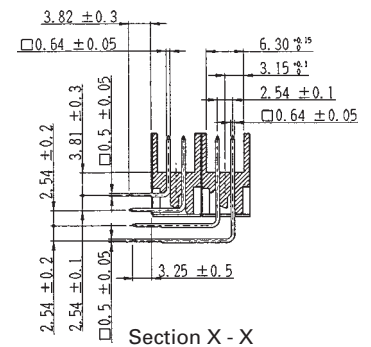
Design No.

Colour Code: 1 = Black 2 = Blue (standard)

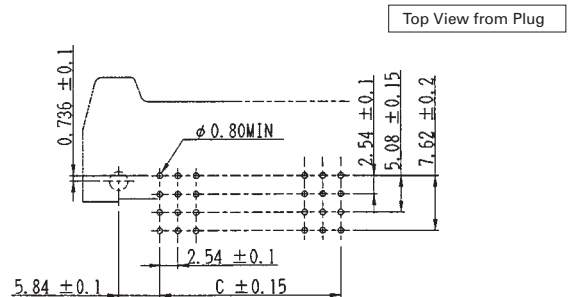
Outline Dimensions



Contact Details



Recommended PCB Layout



| Part No. | No. of Leads | A | B | C = (2.54 x n) | D | E |
|--------------------|--------------|--------|-------|----------------|-------|--------|
| FAP-1601.KS-7876-1 | 16 | 39.62 | 29.94 | 17.78 | 25.14 | 56.14 |
| FAP-4001.KS-7876-2 | 40 | 70.10 | 59.94 | 48.26 | 55.62 | 86.62 |
| FAP-5001.KS-7876-2 | 50 | 82.80 | 72.64 | 60.96 | 68.32 | 99.32 |
| FAP-6401.KS-7876-2 | 64 | 100.58 | 90.42 | 78.74 | 86.10 | 117.10 |

Specifications

Insulation Resistance: 1,000MΩ min. at 500V DC
 Withstanding Voltage: 1,000V AC rms for 1 minute
 Contact Resistance: 30mΩ max. at 10mA
 Current Rating: 1A
 Operating Temp. Range: -20°C to +105°C

Materials and Finish

Housing: PBT, UL94V-0 rated
 Contacts: Copper Alloy
 Plating: Contacts - Gold over Nickel
 Solder Terminals - Tin over Nickel



Features

- 2.54mm contact pitch connectors for MIL standard
- Variations include latch header plugs, box header plugs, and flat cable gang wired sockets

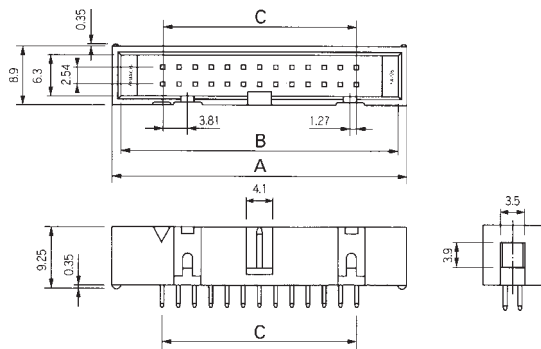
Part Number (Details)

FAP - 34 - 08 - * - 1 - 0 * S

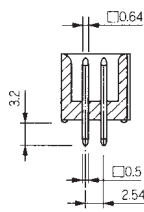
| | |
|---|--|
| Series (plug) | |
| No. of Leads | |
| Terminal Type: 2 = Right Angle Solder Dip 4 = Straight Solder Dip | |
| Housing Colour: 1 = Black, 2 = Blue | |
| Contact Plating: A = Gold (0.76μm over Nickel 2.5~4.5μm) B = Gold (0.3μm over Nickel 2.5~4.5μm) | |
| Solder Term. Plating: S = Tin (2~4μm over Nickel 2.5~4.5μm) | |

Outline Dimensions

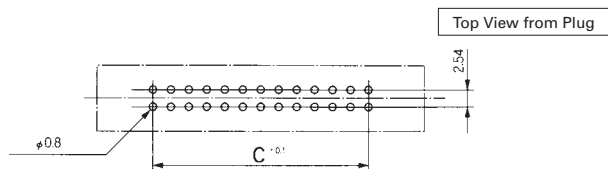
Straight Solder Dip Type



Contact Details

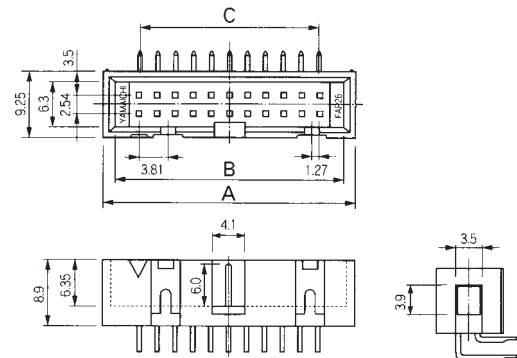


Recommended PCB Layout

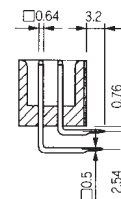


Outline Dimensions

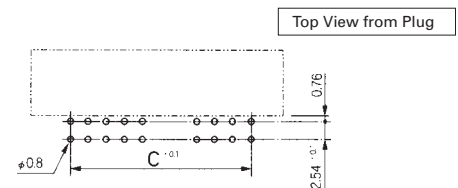
Right Angle Solder Dip Type



Contact Details



Recommended PCB Layout



| Part No. | No. of Leads | A | B | C |
|------------------|--------------|-------|-------|-------|
| FAP-10-08-*-*0*S | 10 | 20.30 | 17.90 | 10.16 |
| FAP-14-08-*-*0*S | 14 | 25.40 | 23.00 | 15.24 |
| FAP-16-08-*-*0*S | 16 | 27.90 | 25.50 | 17.78 |
| FAP-20-08-*-*0*S | 20 | 33.00 | 30.60 | 22.86 |
| FAP-26-08-*-*0*S | 26 | 40.60 | 38.20 | 30.48 |
| FAP-30-08-*-*0*S | 30 | 45.70 | 43.30 | 35.56 |

| Part No. | No. of Leads | A | B | C |
|------------------|--------------|-------|-------|-------|
| FAP-34-08-*-*0*S | 34 | 50.80 | 48.40 | 40.64 |
| FAP-40-08-*-*0*S | 40 | 58.40 | 56.00 | 48.26 |
| FAP-50-08-*-*0*S | 50 | 71.10 | 68.70 | 60.96 |
| FAP-60-08-*-*0*S | 60 | 83.80 | 81.40 | 73.66 |
| FAP-64-08-*-*0*S | 64 | 88.90 | 86.50 | 78.74 |

Specifications

Insulation Resistance: 1,000MΩ min. at 500V DC
 Withstanding Voltage: 1,000V AC rms for 1 minute
 Contact Resistance: 30mΩ max. at 10mA
 Current Rating: 1A
 Operating Temp. Range: -20°C to +105°C

Materials and Finish

Housing: PBT, UL 94V-0 rated
 Contacts: Copper Alloy
 Plating: Gold over Nickel



Features

- 2.54mm contact pitch latch header plug for flat cables
- Variations include latch header plugs (for PC-board connection and IDC) and IDC sockets
- Two-point contact of the flat cable gang wired sockets ensures high reliability

Part Number (Details)

FAP - 34 - 16 * *

Series (plug)

No. of Leads

Type of Cable Connection:

- 1 = Cable on Both Ends (w/o. Strain Relief)
- 2 = Cable on One End (w/o. Strain Relief)
- 3 = Cable Folded on One End (w. Strain Relief)
- 4 = Cable on Center (w. Strain Relief)

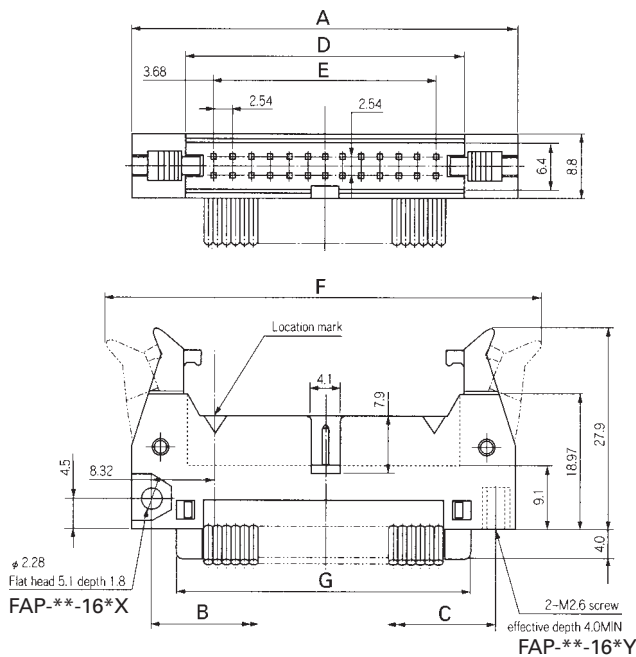
Position of PCB Retaining Screws:

- X = Side of Connector (Connector Horizontal to PCB)
- Y = Back of Connector (Connector Perpendicular to PCB)

Applicable Cables

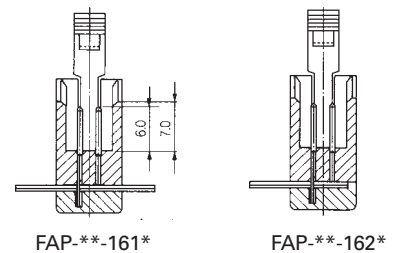
AWG 28 stranded wire, AWG 30 solid wire, with 1.27mm pitch

Outline Dimensions

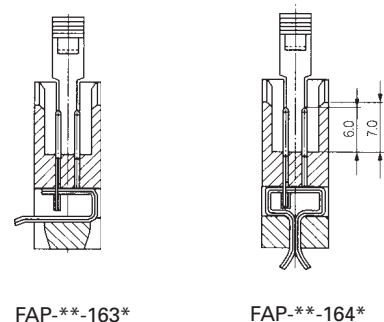


Cable Connection Types

Without Strain Relief



With Strain Relief



| Part No. | No. of Leads | A | B | C | D | E | F | G |
|-------------|--------------|--------|-------|-------|-------|-------|--------|-------|
| FAP-10-16** | 10 | 32.00 | 26.80 | 26.80 | 17.52 | 10.16 | 47.52 | 20.20 |
| FAP-16-16** | 16 | 39.62 | 34.42 | 34.42 | 25.14 | 17.78 | 55.14 | 27.82 |
| FAP-20-16** | 20 | 44.70 | 39.50 | 39.50 | 30.22 | 22.86 | 60.22 | 32.90 |
| FAP-26-16** | 26 | 52.32 | 47.12 | 47.12 | 37.84 | 30.48 | 67.84 | 40.52 |
| FAP-30-16** | 30 | 57.40 | 52.20 | 52.20 | 42.92 | 35.56 | 72.92 | 45.60 |
| FAP-34-16** | 34 | 62.48 | 57.28 | 57.28 | 48.00 | 40.64 | 78.00 | 50.68 |
| FAP-40-16** | 40 | 70.10 | 64.90 | 64.90 | 55.62 | 48.26 | 85.62 | 58.30 |
| FAP-50-16** | 50 | 82.80 | 77.60 | 77.60 | 68.32 | 60.96 | 98.32 | 71.00 |
| FAP-60-16** | 60 | 95.50 | 90.30 | 90.30 | 81.02 | 73.66 | 111.02 | 83.70 |
| FAP-64-16** | 64 | 100.58 | 95.38 | 95.38 | 86.10 | 78.74 | 116.10 | 88.78 |