

- Rugged waterproof case

ARGUS
ANALYZERS



- Display mounts securely to dash

- 2 meters of flexible cable

- 6mm ring terminals connect directly to battery posts

Battery Bug®

BATTERY MONITOR

For Motorcycle & Power Sports Batteries

Critical battery alarms

- Low battery / recharge
- Replace battery / end of life
- Damaging overcharge condition

Critical info at a glance

- % Life remaining
- Lost Capacity
- Battery and Alternator Voltage

Compatible with all 12V batteries (wet, maintenance free, AGM, spiral) up to 1000CCA used in engine starting applications.



www.argusanalizers.com | PO Box 203, Jamestown, Rhode Island, 02835 USA

© 2009 Argus Analyzers. All Rights Reserved. MADE IN TAIWAN

Model No. BB-SBM12-PS EN V01-03/09

■ Automatic cranking health test

Patented CrankCheck™ technology monitors the cranking performance of your battery every time you start the engine.

■ Battery state of health

Cranking performance of each start is displayed between 0% (imminent failure) and 100% (like new). When cranking health falls below 10%, a 30-second audible alarm and visual alarm indicate the battery should be replaced.

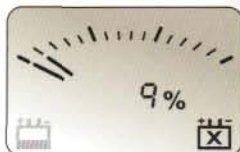
■ Alarms indicate damaging charge conditions

The Battery Bug also monitors voltage, showing battery state of charge and alternator function.

The Battery Bug indicates when to replace your battery before it fails due to normal aging and use. It does not predict starting failure caused by accidental discharge.



Cranking health OK: 65%



Replace battery: 9% state of health



Cranking health OK: 65%
Recharge alarm: voltage 11.9

Install it & forget it!

The Battery Bug will sound alarm when the battery needs attention.



0 851021 001275

Battery Bug®

BATTERY FAILURE WARNING SYSTEM

USER MANUAL

ARGUS
ANALYZERS

! CAUTION

Batteries contain dangerous amounts of energy. To reduce the chance of sparks, damage, or injury:

- Remove metal jewelry from hands and wrists
- Use only tools with insulated handles
- Turn off engine
- Disconnect external chargers

COMPATIBILITY

The BB-SBM12-PS can be installed on any 12V (nominal) lead acid battery used for engine starting up to 1000CCA.

INSTALLATION

1. Determine where you would like to mount the remote display of the Battery Bug BB-SBM12-PS.
2. Using the supplied Velcro pad, affix the Battery Bug display to the vehicle.
3. Route the wire to the battery compartment taking care to avoid potential high temperature areas.
4. Anchor the wire to the vehicle as necessary.
5. Remove the bolt that secures the vehicle's battery wire to the positive (RED, '+') battery post, attach the ring terminal of the red battery bug wire, then replace and tighten the bolt.
6. In the same way, attach the Battery Bug BLACK wire to the negative (BLACK, '-') battery post.
7. Coil excess wire and anchor it inside or near the battery compartment.

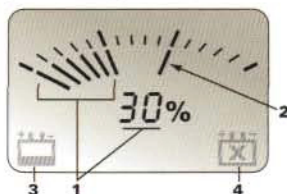
If you do not feel comfortable performing the installation, ask a professional mechanic to install the Battery Bug for you.

OPERATION

The Battery Bug – Starting Battery Monitor Battery Failure Warning System becomes active one minute after installation.

The starting performance of the battery is measured every time the engine is started. The lowest measured starting performance over time determines the starting health indicated on the display.

The numerical display will alternately indicate the battery voltage and the starting health of the battery. The analog 'fuel gauge' display graphically indicates the overall starting health of the battery (solid bars) and the starting performance of the most recent engine start (flashing bar).



- 1 Starting health
- 2 Starting performance of last start
- 3 Weak battery indicator
- 4 Replace battery indicator

When starting health drops below 30%, the 'weak battery' icon (⚡) will turn on. When starting health drops below 10%, the 'replace battery' icon (🔋) will turn on and an audible alarm will sound for 30 seconds after the engine is turned off, and the 'replace battery' icon (🔋) will turn on. When this condition occurs, your battery is near the end of its useful life and starting failure is imminent. Replace your battery to avoid an unexpected failure.

A low charge alarm (🔊) and the 'weak battery' icon (⚡) indicates the battery is significantly discharged. Recharge immediately and resolve the cause of the discharge. Extended periods of discharge cause permanent battery damage. An overcharge alarm (🔊) and flashing voltage value indicates the battery is being charged at a damaging high voltage. Stop charging immediately and resolve the cause of the overcharge.

A low temperature icon (❄️) indicates battery temperatures below 14°F (-10°C) and low starting health indications are expected in such conditions. If your battery must perform in very low temperature conditions, replace your battery when indicated by the Battery Bug, otherwise your battery will perform adequately under normal temperature conditions and replacement now is not necessary.

NOTE: If the battery was unusually or accidentally discharged immediately prior to a low starting health indication, the weak starting health may be the result of the discharged condition rather than poor battery health. Fully charge the battery and reset the Battery Bug by temporarily disconnecting one of the Battery Bug wires from the battery for 10 seconds. If a low starting health is indicated after the next start, replace the battery.

For more information about this or other Argus Analyzer products, visit www.argusanalizers.com.

Warranty

For a period of 12 months from the date of purchase by the first user, Argus will repair or replace this product should it stop working as a result of normal use. Physical, chemical, or other damage is not covered by this warranty.

To make a warranty claim, send the defective Battery Bug and the original purchase receipt postage prepaid to: Argus Analyzers, Product Service, PO Box 203, Jamestown RI 02835, USA.

Copyright © 2009 by Argus Analyzers.

This product is protected by one or more of the following patents: US 6,704,629; 6,791,464; 7,212,006; EP 131 8412; US, EU, and other worldwide patents issued and pending.

Ver. 01-03/09