

SPECIFICATION FOR AVD-TDV101NC-560-A

Customer Approval:

--

	SIGNATURE	DATE
PREPARED BY		
CHECKED BY		
APPROVED BY		

Notes:

- 1、 Please contact AVD before assigning your product based on this module specification.
- 2、 To improve the quality of product, and this product specification is subject to change without any notice.

PRODUCT APPEARANCE





CONTENTS

1. Product Overview.....	4
1.1 Applications.....	4
1.2 Custom Service.....	4
2. Product Features.....	5
2.1 Video Performance Parameters.....	5
2.2 Electronic Performance Parameters.....	5
2.3 Environmental Performance Parameters.....	5
3. Functional Description.....	6
3.1 Interface.....	6
3.2 Key function.....	6
3.3 Product Draft.....	6
4. Physical Dimension.....	7
5. Instructions.....	8
5.1 Product installation and fixation.....	8
5.2 Product line connection.....	8
6. Matters Needing Attention.....	8
6.1 Safety instructions.....	8
7. Packing accessories.....	9

1. Product Overview

This product, an intelligent, multi-purpose Touch all-in-one PC, The high performance video processing chip is used as the core processor, which can be programmed through USB and ISP. It uses the company's own research and development of high-definition TFT LCD screen, CTP touch screen, video control panel and integral shell for the perfect combination. This product uses multi-touch capacitive screen, and its touch reaction is fast and sensitive. All the control can be completed by touching the screen. Easy to use, you can replace the mouse to complete its function. In a word, this product replaces cumbersome buttons and remote controls with power buttons and touch functions. It shows the host screen via video cable. The product performance is stable, and the display effect and the touch effect is good, full-featured, which can fully meet your different application needs.

1.1 Applications

This product can be widely used in various fields of data connection:

1. Industrial site control;
2. Embedded into various types of equipment as a display device;
3. Train, subway station, port monitoring display;
4. Vehicle(train, subway, car) display;
5. Advertising machine, in the living area elevator, public places, commercial offices and other countries for commercial advertising machines and so on;
6. For security system;
7. All kinds of robot interaction interface display control.

1.2 Custom Service

- Customizing instructions according to user needs.
- Customizable capacitive / resistive touch screen.
- Provide graphic art and product structure design services, customizable boot screen and LOGO;
- Various display size customization, 7-55 inch display windows, maximum support 1920*1080P display resolution;
- Customize as much as possible and satisfy users' needs as much as possible.

2. Product Features

2.1 Video Performance Parameters

Item	Parameters	Description
Color depth	16.7M	
Display size	76.9 mm(width)x 63.9 mm(height)	boundary dimension
View size	70.8 mm(width)x 52.56 mm(height)	10.1 Inch
Resolution	1024*600	
Brightness	350 nit	
Backlight	LED	
Contrast ratio	600:1	
Backlight control	Support PWM dimming	
Touch type	Capacitive screen	Support multi-touch

2.2 Electronic Performance Parameters

Item	Test Condition	Min	Typ	Max	Unit
Working Voltage		-	12	-	V
Working Current	VDD=12V 25°C Backlight Max	-	360	-	mA
Standby Current	VDD=12V 25°C Standby mode	-	35	-	mA

2.3 Environmental Performance Parameters

Item	Test Environmental	Min	Typ	Max	Unit
Operation temperature	VDD=12V, Humidity 60%	0	25	50	°C
Storage temperature		-20	25	60	°C
Humidity	25 °C	10%	60%	90%	RH

3. Functional Description

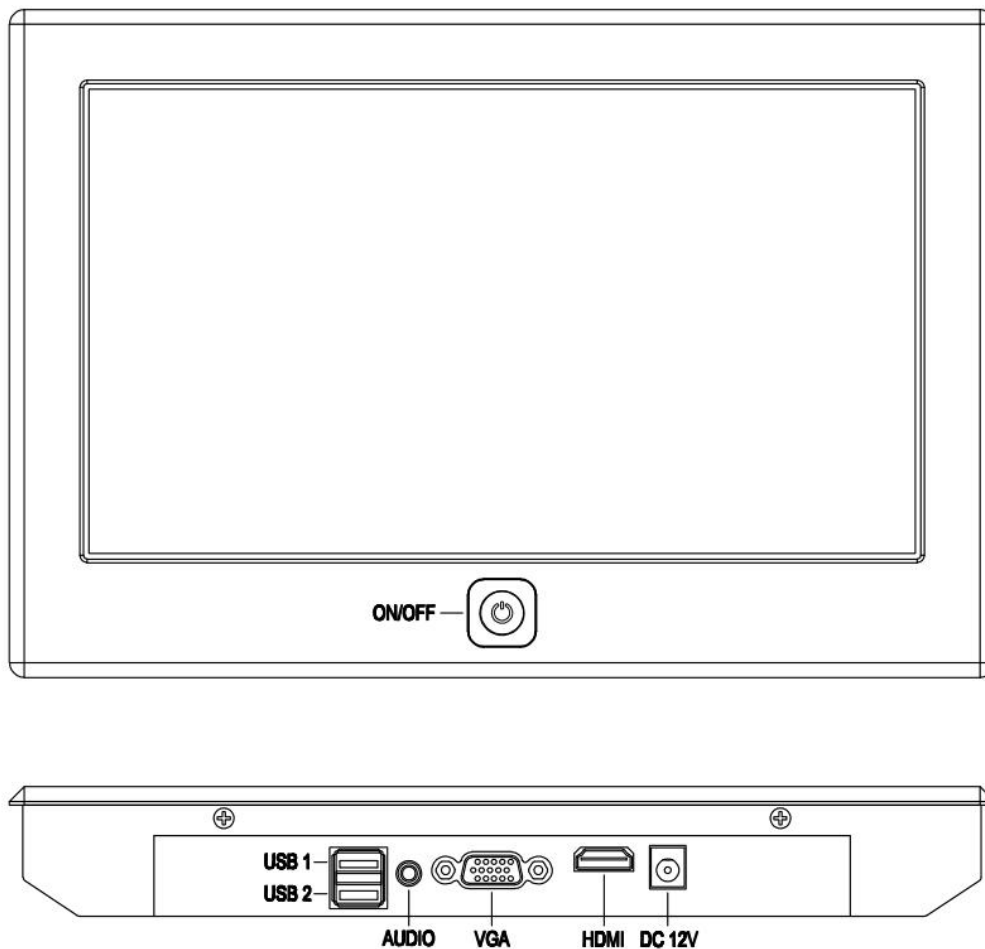
3.1 Interface

Item	Function	Description
DC	Power input	12V/2A
HDMI	Video input	Support
VGA	Video input	Optional
AUDIO	Audio input	Support
USB 1	Touch function	Support
USB 2	NC	Optional

3.2 Key function

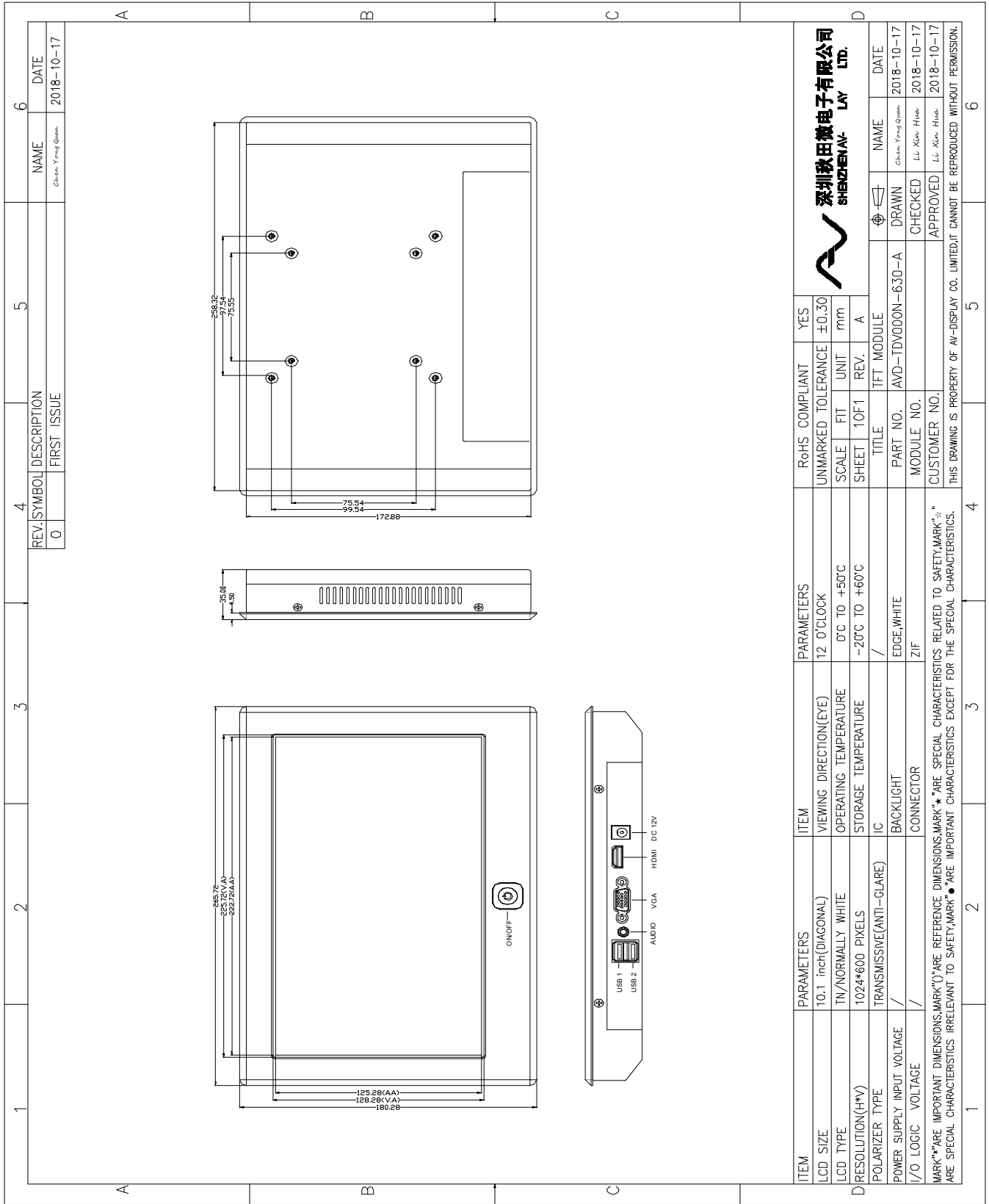
Item	Function	Description
Key	Power switch	Make the product in standby mode

3.3 Product Draft





4.Physical Dimension



5. Instructions

5.1 Product installation and fixation

After taking out the product, the machine can be fixed in a certain place by positioning hole and fixed hanger. (it is necessary to ensure that the fixed location of the machine can not be loosened.)

5.2 Product line connection

Then follow the instructions to connect the dual-head USB cable, power cord, HDMI cable or VGA line:

(1) Power cords access : Power adapter input 110-240V AC 50/60hz, output voltage(screen input voltage)12V DC, maximum load current 2A.

- ① Confirm that the input parameters of the power adapter meet your local standard.
- ② Connect the power adapter plug to the power socket, and the output port is connected to the LCD power port.

(2) Signal line access:

- ① HDMI cable: HDMI cable supports TYEPA 19pin HDMI head with a length of 1.5 meters.
- ② Connect one end of the HDMI cable to the HDMI outlet of the embedded display device, and the other end interface.
- ③ USB cable: Support double head TYPE A male head, length 1.5m.
- ④ Connect one end of the USB 1 cable to the embedded display device USB port outlet and the other end interface.

6. Matters Needing Attention

6.1 Safety instructions

- ① Do not pour any liquid on the machine, please stay away from liquid when used.
- ② Do not put the monitor on the unstable car, chair or table. If the monitor falls down carelessly, it may hurt the user and may cause damage to the equipment. If the monitor is fixed to the wall or shelf, the installation should be strictly followed by the installation.
- ③ Do not add or change parts of this machine.
- ④ When the machine is not used for a long time, please cut off the power.
- ⑤ Do not put foreign body into the machine to avoid unnecessary damage.
- ⑥ In thunder and lightning, do not contact the power cord and signal cable.
- ⑦ Many narrow openings on both sides of the back shell are ventilated. In order to ensure that the monitor is operated without overheating, these cooling holes should not be blocked or covered.
- ⑧ Do not touch the power plug and monitor with wet hand.
- ⑨ Please don't touch the touch screen with tough things to avoid hurting the screen.
- ⑩ In order to avoid the damage caused by fire or electric shock, do not leave the machine in the rain or in a humid place.

7. Packing accessories

Name	Nnit	Number
12V Power adapter	PCS	1
HDMI connection wire	PCS	1
USB connection wire	PCS	1
Rack	PCS	1
Operating instruction	PCS	1