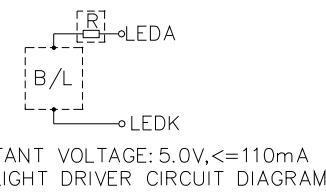
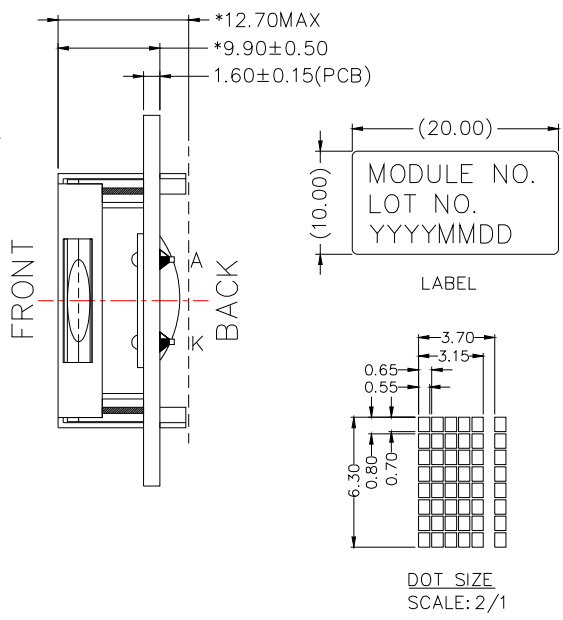
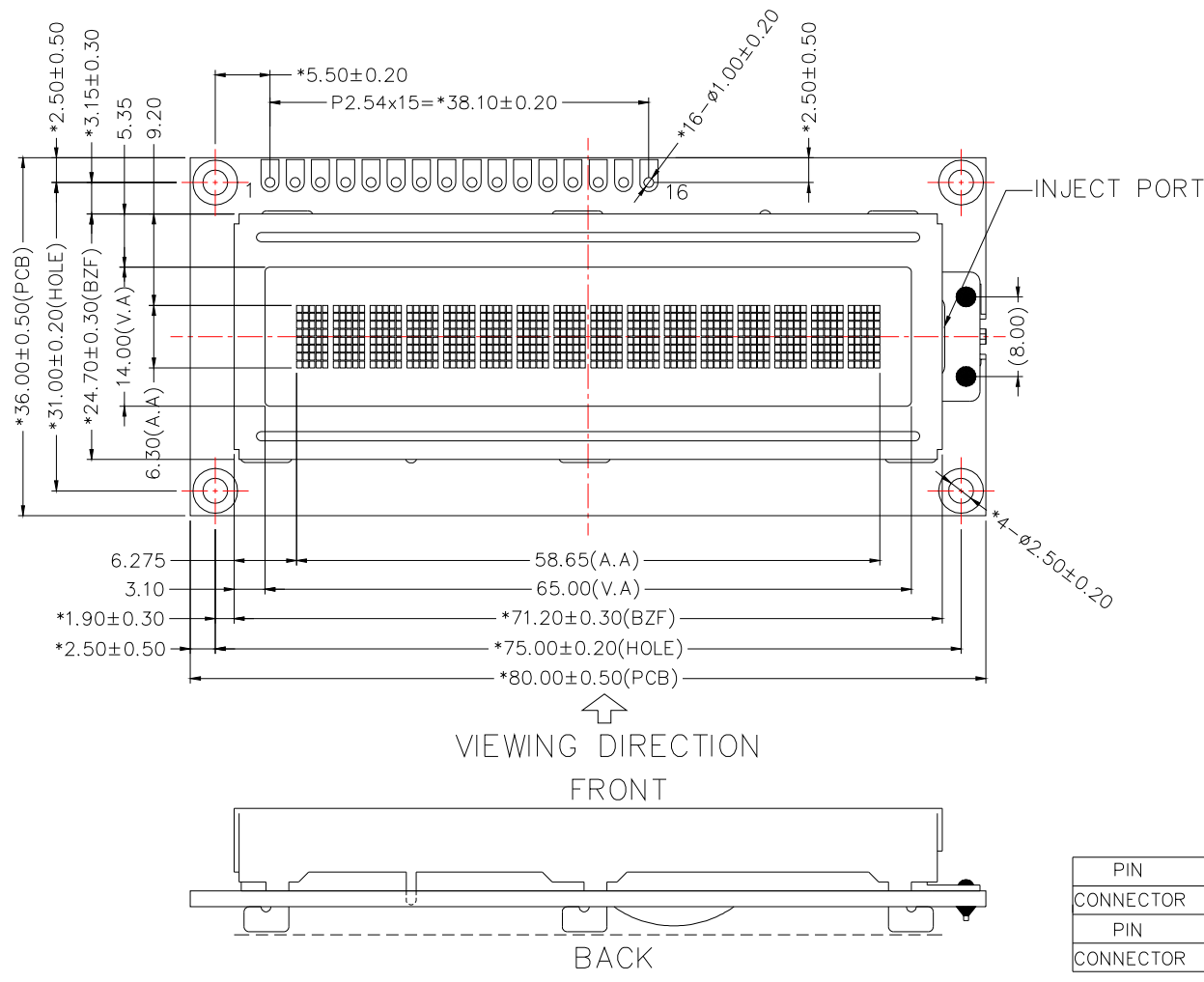


REV.	SYMBOL	DESCRIPTION	NAME	DATE
A		FIRST ISSUE	zhangmayan	MAR-24-2006
B	①	RoHS	zhangmayan	MAY-06-2006
C	②	Change IC	zhangmayan	MAY-13-2006
D	③	Change LOGO	zhangmayan	NOV-27-2007
E	⚠	CHANGE IC	JIANYU.WU	NOV-02-2017



PIN	1	2	3	4	5	6	7	8
CONNECTOR	VSS	VDD	VO	RS	R/W	E	DB0	DB1
PIN	9	10	11	12	13	14	15	16
CONNECTOR	DB2	DB3	DB4	DB5	DB6	DB7	LEDA	LEDK

ITEM	PARAMETERS	ITEM	PARAMETERS	RoHS/REACH COMPLIANT	YES
DISPLAY TYPE	STN, POSITIVE, GREY	VIEWING DIRECTION	6 O'CLOCK	UNMARKED TOLERANCE	±0.30
DRIVING METHOD	1/16 DUTY, 1/5 BIAS	OPERATING TEMPERATURE	-20°C TO +70°C	SCALE	FIT UNIT mm
POLARIZER TYPE	TRANSFLECTIVE	STORAGE TEMPERATURE	-30°C TO +80°C	SHEET	1 OF 1 REV. E
LCD OPERATING VOLTAGE	4.5V(REF)	IC	AIP31066L-001(OR COMPATIBLE) ② ⚠	TITLE	LCM
LOGIC VOLTAGE(VDD)	5.0V	BACKLIGHT	BOTTOM, Y-G(22DIES)	PART NO.	/
GRayscale SUPPORT	NO	CONNECTOR	ZEBRA	MODULE NO.	ABC016001A15-GHY-R



NAME	DATE
DRAWN JIANYU.WU	NOV-02-2017
CHECKED Yanhui.Li	NOV-02-2017
APPROVED QIANYING.WEI	NOV-02-2017

MARK"*"ARE IMPORTANT DIMENSIONS, MARK"()"ARE REFERENCE DIMENSIONS, MARK"★"ARE SPECIAL CHARACTERISTICS RELATED TO SAFETY, MARK"☆"ARE SPECIAL CHARACTERISTICS IRRELEVANT TO SAFETY, MARK"●"ARE IMPROTANT CHARACTERISTICS EXCEPT FOR THE SPECIAL CHARACTERISTICS.

CUSTOMER NO. /

THIS DRAWING IS PROPERTY OF AV-DISPLAY CO. LIMITED, IT CANNOT BE REPRODUCED WITHOUT PERMISSION.