



DOP-112MX

DOP-112WX

DOP-115MX

DOP-115WX

High color • User-friendly
Delta Electronics, Inc.
No.18, Xinglong Rd., Taoyuan City
33068, Taiwan

Instruction Sheet

(1) General precautions

Thank you for purchasing this product. This instruction sheet provides information about the DOP-100 series HMI. Before using this product, please read through this instruction sheet carefully to ensure the correct use of the product. Please keep this sheet handy for quick reference whenever needed. Before finishing reading this sheet, please follow the instructions below

- Install the product in an indoor location, which is free of vapor, corrosive and inflammable gas.
- Please refer to the wiring diagram when connecting the wires.
- Ensure your HMI is correctly grounded. The grounding method must comply with the national electrical standard (please refer to NFPA 70: National Electrical Code, 2005 Ed.).
- Do not disassemble the HMI or change the wiring when power is on.
- Do not touch the power supply when power is on, or it may cause electric shock.
- When the HMI displays a low power notification and requires a battery change, please contact your local distributor or Delta Customer Service Center for the replacement. Do not change the batteries by yourself.
- This product can be used with other industrial automation equipment. Please read through this sheet carefully and install the product according to the instructions to avoid danger.
- Cleaning method: please use a dry cloth to clean the product.
- This product must be used at an altitude below 2,000 m.
- If the equipment is used in a manner not specified by the manufacturer, the protection provided by the equipment may be impaired.
- For repair and maintenance, please contact Delta Electronics, Inc. Address: No.18, Xinglong Rd., Taoyuan City, Taiwan. TEL: +886-3-3626301.

If you have any inquiry during operation, please contact our local distributors or Delta sales representatives. The content of this instruction sheet may be revised without prior notice. Please consult our distributors or download the latest version at Delta's website (<http://www.delta.com.tw/ia>).

(2) Communication port pin assignment

COM1 / COM2 of DOP-112MX / DOP-112WX / DOP-115MX / DOP-115WX

| COM Port | Pin | MODE1 | | MODE2 | | MODE3 | |
|----------|-----|--------|--------|--------|--------|--------|--------|
| | | COM1 | COM2 | COM1 | COM2 | COM1 | COM2 |
| | | RS-232 | RS-485 | RS-232 | RS-422 | RS-485 | RS-485 |
| | 1 | - | - | - | TXD+ | D+ | - |
| | 2 | RXD | - | RXD | - | - | - |
| | 3 | TXD | - | TXD | - | - | - |
| | 4 | - | D+ | - | RXD+ | - | D+ |
| | 5 | GND | | GND | | GND | |
| | 6 | - | - | - | TXD- | D- | - |
| | 7 | RTS | - | RTS | - | - | - |
| | 8 | CTS | - | CTS | - | - | - |
| | 9 | - | D- | - | RXD- | - | D- |

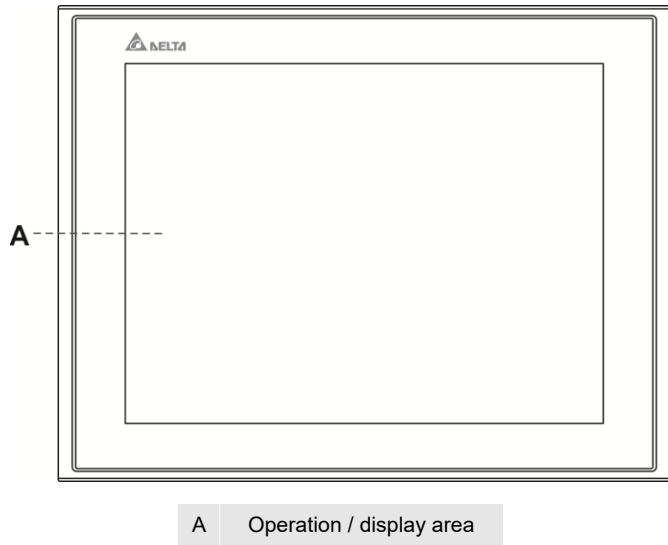
COM3 / COM4 of DOP-112MX / DOP-112WX / DOP-115MX / DOP-115WX

| COM Port | Pin | MODE1 | | MODE2 | | MODE3 | |
|----------|-----|--------|--------|--------|--------|--------|--------|
| | | COM3 | COM4 | COM3 | COM4 | COM3 | COM4 |
| | | RS-232 | RS-485 | RS-232 | RS-422 | RS-485 | RS-485 |
| | 1 | - | - | - | TXD+ | D+ | - |
| | 2 | RXD | - | RXD | - | - | - |
| | 3 | TXD | - | TXD | - | - | - |
| | 4 | - | D+ | - | RXD+ | - | D+ |
| | 5 | GND | | GND | | GND | |
| | 6 | - | - | - | TXD- | D- | - |
| | 7 | RTS | - | RTS | - | - | - |
| | 8 | CTS | - | CTS | - | - | - |
| | 9 | - | D- | - | RXD- | - | D- |

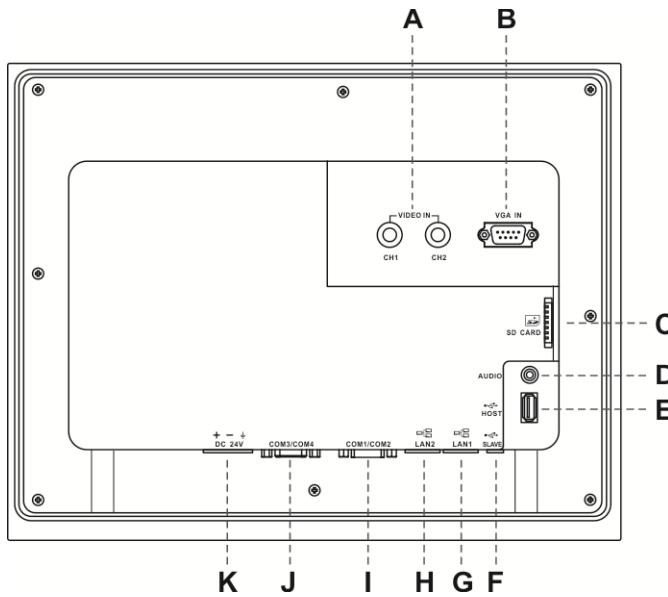
Note: mark “-” means connection is not required.

(3) Description of each part

DOP-112MX / DOP-112WX (front view)

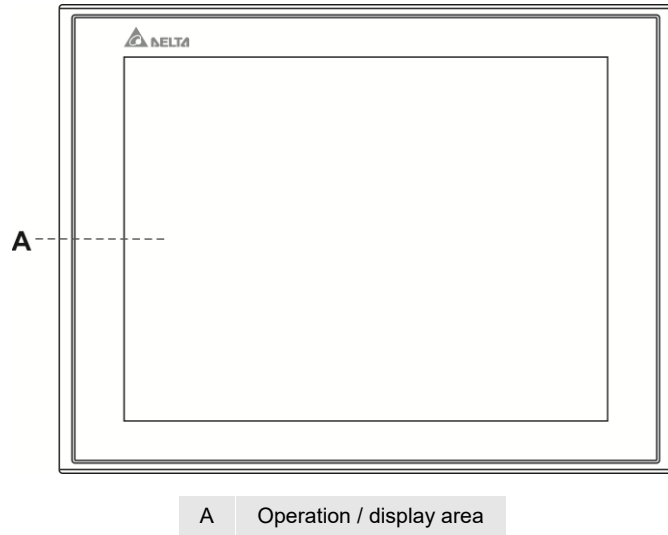


DOP-112MX / DOP-112WX (rear view)

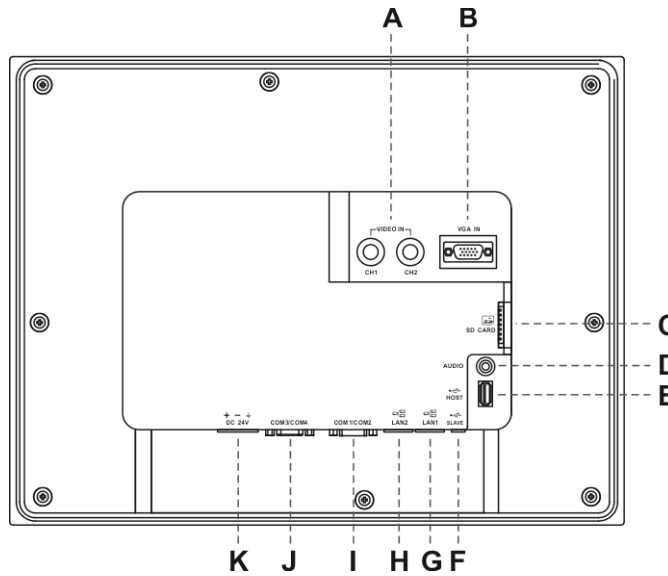


| | | | |
|---|--|---|------------------------------|
| A | Video In (CH1 / CH2) Only for DOP-112MX | B | VGA In Only for DOP-112MX |
| C | SD Card | D | Audio |
| E | USB Host | F | Mini USB |
| G | LAN1 (100M bps) | H | LAN2 (100M bps) |
| I | COM1 / COM2 | J | COM3 / COM4 |
| K | Power input terminal (24AWG wire min.) | - | - |

DOP-115MX / DOP-115WX (front view)



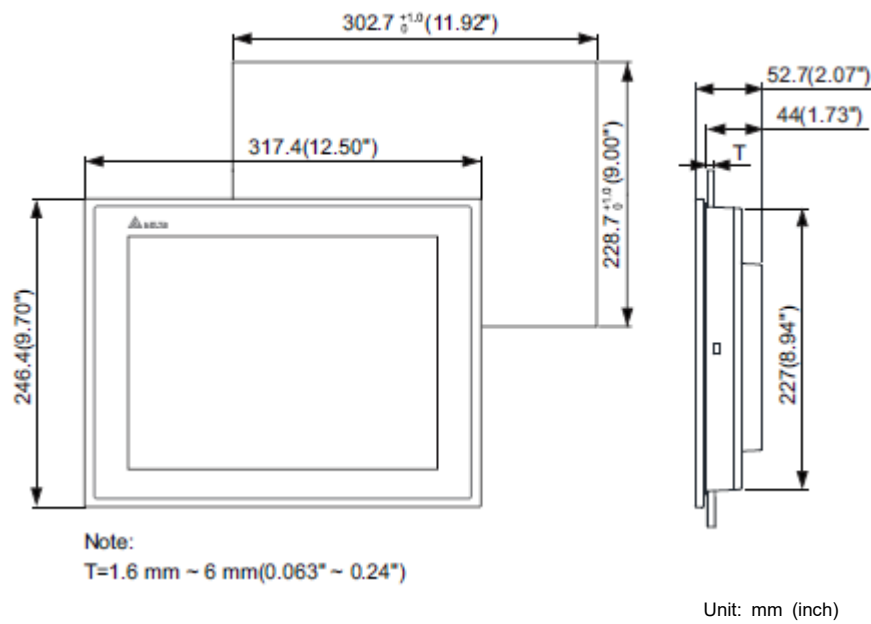
DOP-115MX / DOP-115WX (rear view)



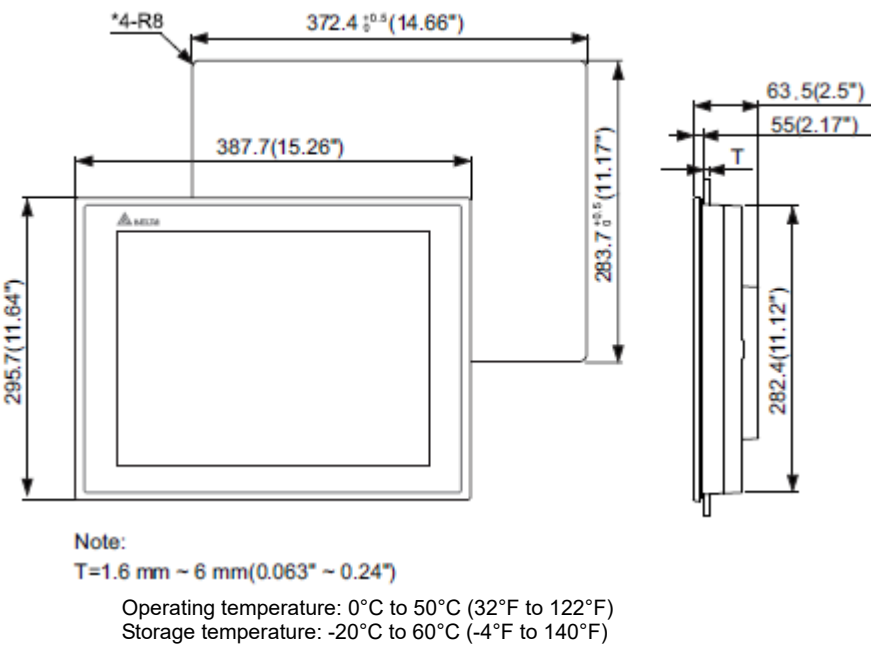
| | | | |
|---|--|---|------------------------------|
| A | Video In (CH1 / CH2) Only for DOP-115MX | B | VGA In Only for DOP-115MX |
| C | SD Card | D | Audio |
| E | USB Host | F | Mini USB |
| G | LAN1 (100M bps) | H | LAN2 (100M bps) |
| I | COM1 / COM2 | J | COM3 / COM4 |
| K | Power input terminal (24AWG wire min.) | - | - |

(4) Mounting dimensions

DOP-112MX / DOP-112WX



DOP-115MX / DOP-115WX

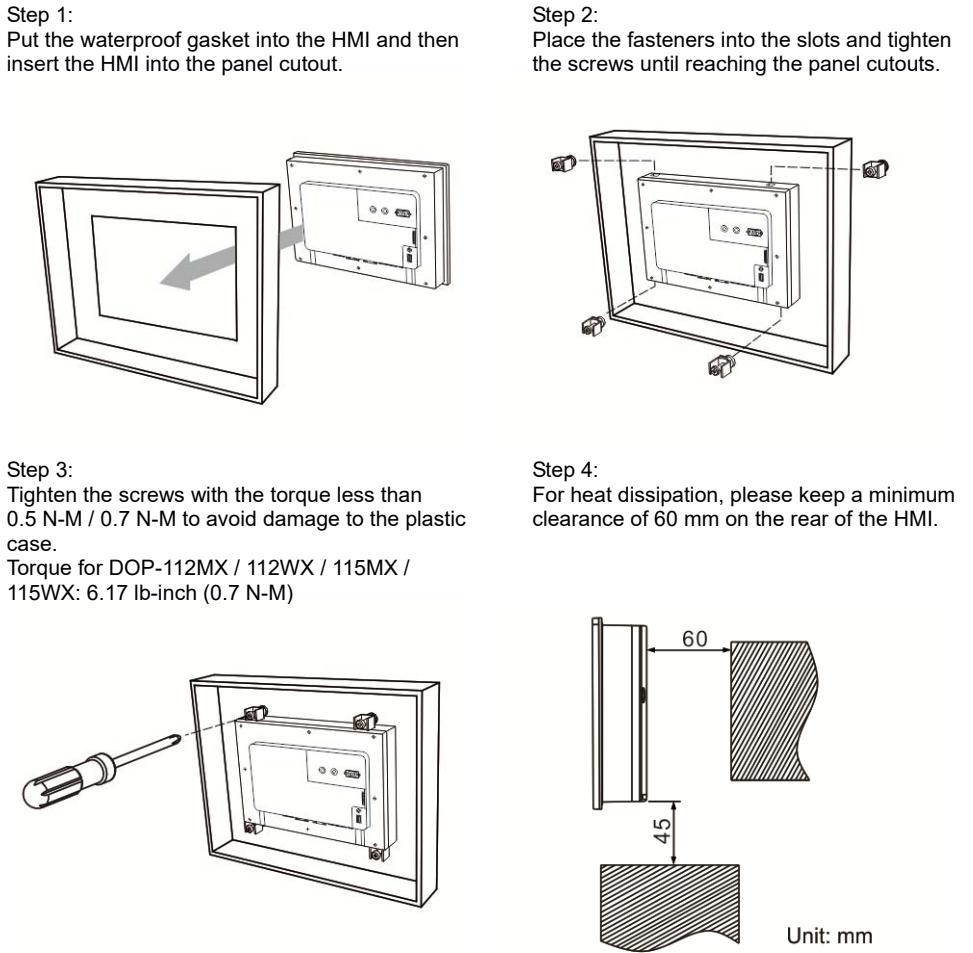


(5) Installation and wiring

Precautions:

- Incorrect installation may result in malfunction
- To ensure the HMI is well ventilated, make sure there is sufficient space between the HMI and the adjacent objects or walls.
- This product should be used on a case / platform which conforms to enclosure Type 4X standard (for indoor use only).
- The maximum panel thickness for mounting must be no greater than 5 mm.

Installation steps:

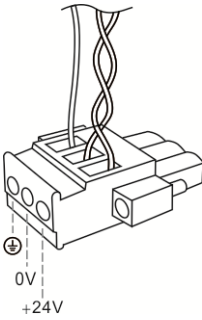


Wiring:

| Type | Wire gauge (AWG) | Stripped length | Torque |
|----------|------------------|-----------------|---------------------|
| Solid | 24 – 12 | 7 – 8 mm | 5 kg-cm (4.3 lb-in) |
| Stranded | 24 – 12 | 7 – 8 mm | 5 kg-cm (4.3 lb-in) |



Please refer to the following diagram when wiring the power connector. The temperature rating of the cable must be greater than 75°C (167°F).



(6) Hardware specifications

| Model | | DOP-112MX DOP-112WX | DOP-115MX DOP-115WX |
|---------------------------------|---------------|--|----------------------------|
| Display | Panel type | 12" TFT LCD (24-bit color) | 15" TFT LCD (24-bit color) |
| | Resolution | 1024 x 768 pixels | |
| | Backlight | LED Back Light (half-life under room temperature 25°C > 50,000 hours)*1 | |
| | Display range | 245.76 mm x 184.32 mm | 304.1 mm x 228.1 mm |
| | Brightness | 500 cd / m² (Typ.) | 450 cd / m² (Typ.) |
| CPU | | Dual Core 1GHz | |
| Flash ROM | | 8GB | |
| RAM | | DDR3 1000MHz 1GB | |
| Touchscreen | | 4-wire resistive touchscreen > 10,000,000 operated | |
| Buzzer | | Multi-Tone Frequency (2K – 4K Hz) / 85 dB | |
| Network interface | | 100M bps x 2 | |
| USB | | 1 Mini USB Ver 2.0; 1 USB Host Ver 2.0 | |
| SD | | SD x 1 | |
| Serial communication port | COM1 | RS-232 (supporting flow control) / RS485 *2 | |
| | COM2 | RS-422 / RS485 *2 | |
| | COM3 | RS-232 (supporting flow control) / RS-485 *2 | |
| | COM4 | RS-422 / RS485 | |
| Auxiliary function key | | N/A | |
| Calendar | | Built-in | |
| Cooling method | | Natural cooling | |
| Approvals | | CE / UL (please use shielding network cable and magnetic ring with the filter of 300 ohm / 100 MHz) | |
| Panel waterproof level | | IP65 / NEMA4 | |
| Operation voltage*2 | | DC +24V (-15% to +15%) (please use an isolated power supply) Supplied by Class 2 or SELV circuit (isolated from MAINS by double insulation) | |
| Leakage current | | 500 V _{AC} for 1 minute (between DC24V terminal and FG terminal) | |
| Power consumption*2 | | 16.08 W (Max) *3 | 21.12 W (Max) *3 |
| Backup battery | | 3V lithium battery CR2032 × 1 | |
| Backup battery life | | About 3 years or more at 25°C (subject to operating temperature and condition) | |
| Operating temperature | | 0°C to 50°C (32°F to 122°F) | |
| Storage temperature | | -20°C to +60°C (-4°F to 140°F) | |
| Operating environment | | 10% to 90% RH [0°C - 40°C], 10% to 55% RH [41°C - 50°C]; pollution degree: 2 | |
| Vibration resistance | | Conforms to IEC61131-2: continuous vibration 5 Hz - 8.3 Hz with amplitude 3.5 mm; 8.3 Hz - 150 Hz with amplitude 1G | |
| Shock resistance | | Conforms to IEC60068-2-27: 11 ms, 15 G Peak, in X, Y, Z directions each for 6 times | |
| Dimension (W) x (H) x (D) mm | | 317.4 x 246.4 x 52.7 | 387.7 x 295.7 x 63.5 |
| Mounting dimension (W) x (H) mm | | 302.7 x 228.7 | 372.4 x 283.7 |
| Weight | | Approx. 2,110 g | Approx. 3,200 g |

Note:

1. The half-life of the backlight is defined as the maximum luminance being reduced by 50% when the maximum drive current is supplied to the HMI. The life of LED backlight shown here is estimated at the room temperature of 25°C with ambient humidity.
2. The withstand voltage of the isolated power circuit is 1500V peak for 1 minute.
3. The HMI power consumption is the power consumed when the HMI is not connecting with other peripheral devices. To ensure normal operation of the HMI, the recommended capacity of the power supply is 1.5 to 2 times of the specified power consumption.
4. Isolated power supply is recommended.
5. For the DOPSoft programming software of the DOP-100 series and the user manual, you can download them at <http://www.delta.com.tw/ia>.
6. DOP-100 series can be used with other industrial automation equipment. Please read through this sheet carefully and install the product according to the instructions to avoid danger.