

**TAEHWATRANS**

CURRENT TRANSFORMER SPECIFICATION

MODEL NO

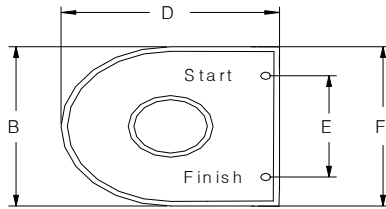
CONNECTION

CUSTOMER

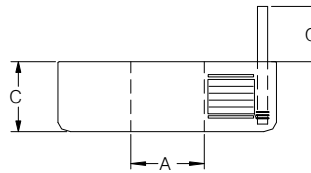
TZ1H6

HORIZONTAL TYPE

STANDARD TYPE

1. DRAWING

< Front >



< Profile >

L



K

Primary current flow: K(Start) → L(Finish)

2. DIMENSION

(Unit : mm/inch)

A (MIN)	B (MAX)	C (MAX)	D (MAX)	E (±0.3)	F (MAX)	G (±0.25)
6.0	17.1	7.0	18.2	10.3	17.1	6.0
0.236"	0.673"	0.276"	0.717"	0.406"	0.673"	0.236"

3. ELECTRICAL PROPERTIES

Current Ratio	1,000 : 1	DC Resistance	32 ~ 38Ω
High Potential Voltage	a.c 3.5KV / Min	Frequency	50Hz / 60Hz
Safety Certificate	UL	Current Rating	15A, 20A, 30A
Operating Temperature	-20℃ ~ 65℃	Storage Temperature	-40℃ ~ 85℃
General Application	RCCB, ELCB, LCDI, ALCI etc		

4. TESTING VALUE

Test Conditions				Electrical Properties		
Primary Current Io (mA)	Secondary Burden Resistance (Ω)	Frequency (HZ)	DC Current (AT)	Output Voltage Vo (mV)	Remanence Magnetism Vo' (mV)	Thermal Variation Vo'' (mV) at -20℃ + 65℃
20mA	820Ω	60Hz	50AT	12.5 ~ 13.5mV	Max 8%	Max 10%

Hair-Pin Test at 300A / 3kΩ
(Secondary noise at the balance current)

RMS ≤ 10mV

TAEHWATRANS CO., LTD Tel : 82 31 315 8161~ 4

288-2,Misan-Dong, Siheung-si Fax : 82 31 315 8165

Gyeonggi-Do,,Korea E-mail:sales@taehwatrans.com



This documents is drafted by TAEHWATRANS and shall not be revised and disclosed to the third parties without the permission of TAEHWATRANS. Rev. TH01 2016.04.19