

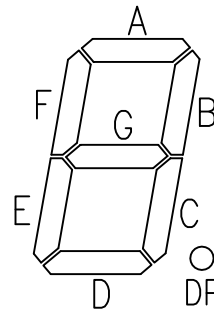
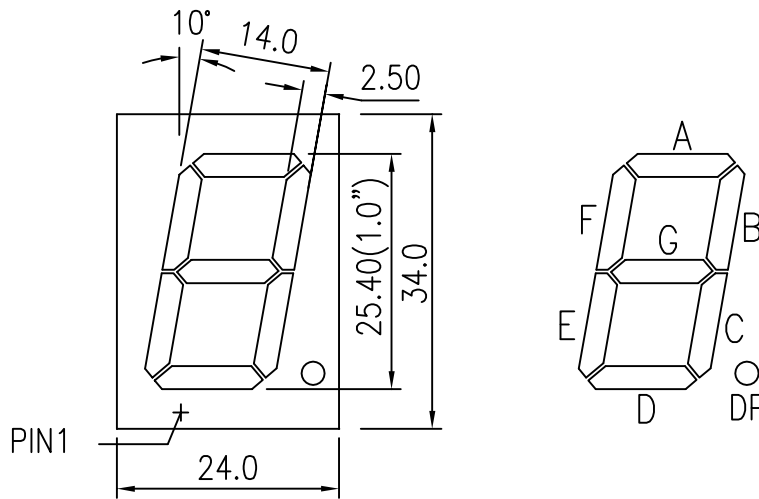


TAIWAN OASIS LED DATA SHEET

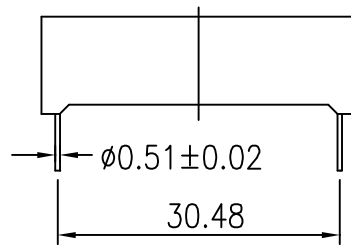
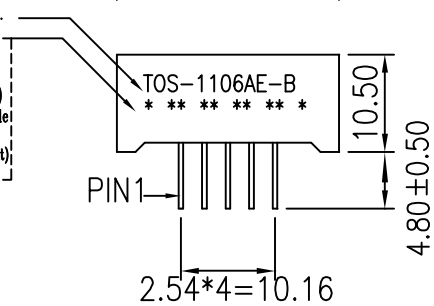
PART NO. : TOS-1106AE-B

APPEARANCE			TECHNOLOGIE	GaAsP/GaP
FACE	SEGMENT	PIN	SOURCE COLOR	Orange
Black	White	∅0.51x10.28	DRIVER MODE	Com.Cathode
			PACKING	"F" Plastic Box

PACKAGE DIMENSIONS

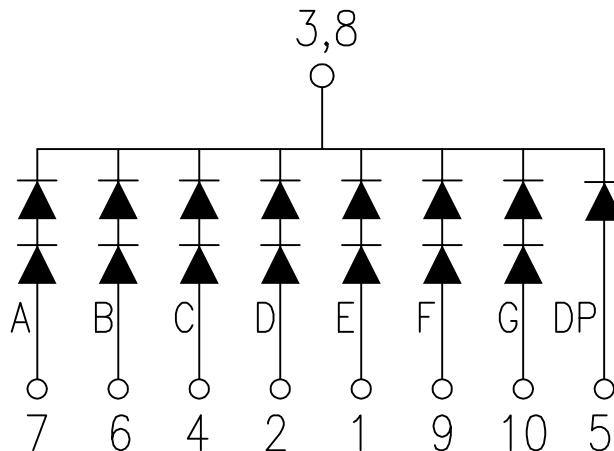


Remark:
 Year Code Week Code
 * * * * * * * * * *
 * * * * * * * * * *
 * * * * * * * * * *
 * * * * * * * * * *



NORMAL TOLERANCE: ±0.25 ANGLE: ±1°

INTERNAL CIRCUIT DIAGRAM



DATE	10/13/06'	SCALE	2:1	DRAWING NO.	S-1106AE-B-A	DRAWN	Q.C.F	CHECKED	
UNIT	M/M	SHEET NO.	1/2			CUSTOMER	ES017	APPROVED	



TAIWAN OASIS LED DATA SHEET

PART NO. : TOS-1106AE-B

ABSOLUTE MAXIMUM RATINGS AT TA=25°C

PARAMETER	VALUE	UNITS
Power Dissipation Per Segment (except Dp)	120	mW
Peak Forward Current Per Segment (1/10 Duty Cycle, 0.1ms Pulse Width)	80	mA
Continuous Forward Current Per Segment	20	mA
Recommend Operating Current	15	mA
Reverse Voltage Per Segment (except Dp)	10	V
Operating Temperature Range	-25 to +85	°C
Storage Temperature Range	-30 to +85	°C
Junction Temperature	+85	°C
Lead Free Solder Temperature(1/16 Inch Below Seating Plane)	260°C for 3 sec.	

ELECTRICAL/OPTICAL CHARACTERISTICS AT TA=25°C

PARAMETER	SYMBOL	MIN.	TYP.	MAX.	UNITS	TEST CONDITION	GRADE
Luminous Intensity Per Segment	I _v	3501	4113	4725	ucd	I _F =10mA	H
Luminous Intensity Per Segment	I _v	4726	5435	6144	μcd	I _F =10mA	K
Luminous Intensity Per Segment	I _v	6145	7066	7987	μcd	I _F =10mA	M
Peak Emission Wavelength	λ _p		630		nm	I _F =20mA	
Spectral Line Half-Width	Δλ		35		nm	I _F =20mA	
Forward Voltage Per Segment (except Dp)	V _F	3.6	4.0	4.8	V	I _F =20mA	
Reverse Current Per Segment (except Dp)	I _R			20	μA	V _R =10V	
Luminous Intensity Matching Rate	I _v -m			1.5:1		I _F =20mA	

Notes: Above specification may be changed without notice.

DATE	10/13/06'	SCALE	———	DRAWING NO.	S-1106AE-B-A	DRAWN	Q.C.F	CHECKED	
UNIT	———	SHEET NO.	2/2			CUSTOMER	ES017	APPROVED	

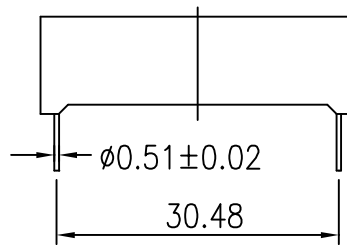
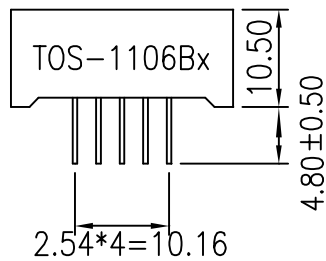
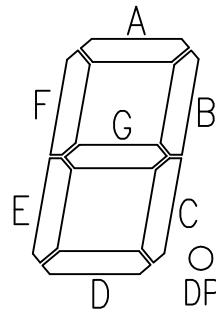
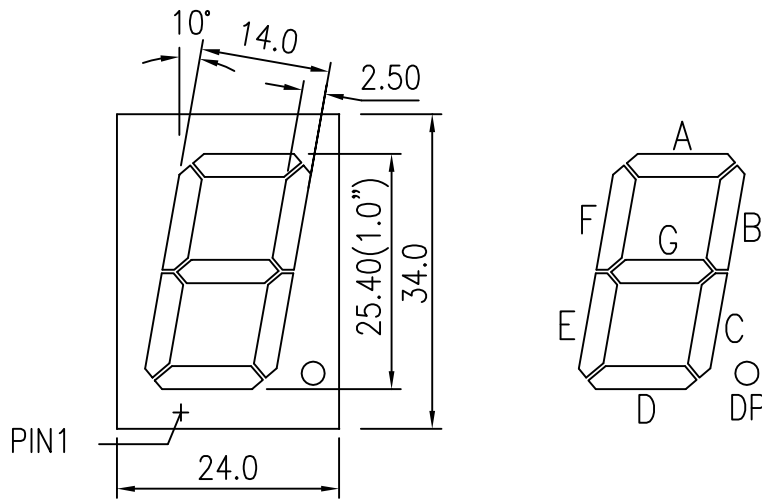


TAIWAN OASIS LED DATA SHEET

PART NO. : TOS-1106BG-B

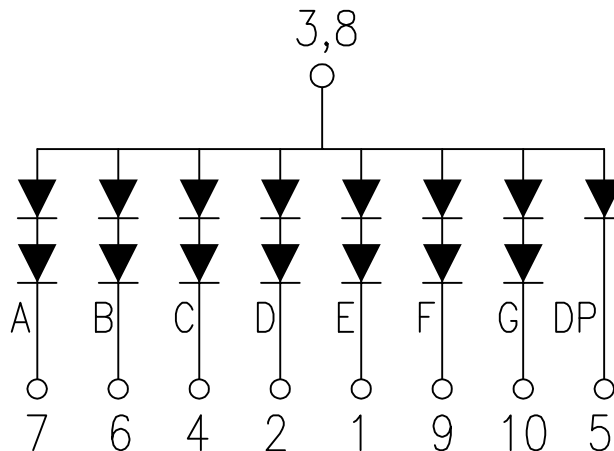
APPEARANCE			TECHNOLOGIE	GaP
FACE	SEGMENT	PIN	SOURCE COLOR	Green
BlacK	White	∅0.51x10.28	DRIVER MODE	Com.Anode
			PACKING	"F" Plastic Box

PACKAGE DIMENSIONS



NORMAL TOLERANCE: ±0.25 ANGLE: ±1°

INTERNAL CIRCUIT DIAGRAM



DATE	09/15/05'	SCALE	2:1	DRAWING NO.	S-1106BG-B-A	DRAWN	H.Y.T	CHECKED	
UNIT	M/M	SHEET NO.	1/2			CUSTOMER		APPROVED	



TAIWAN OASIS LED DATA SHEET

PART NO. : TOS-1106BG-B

ABSOLUTE MAXIMUM RATINGS AT TA=25°C

PARAMETER	VALUE	UNITS
Power Dissipation Per Segment (except Dp)	120	mW
Peak Forward Current Per Segment (1/10 Duty Cycle, 0.1ms Pulse Width)	80	mA
Continuous Forward Current Per Segment	20	mA
Recommend Operating Current	15	mA
Reverse Voltage Per Segment (except Dp)	10	V
Operating Temperature Range	-25 to +85	°C
Storage Temperature Range	-30 to +85	°C
Junction Temperature	+85	°C
Storage Time at 25±2°C / 65%RH±5%RH	6	Month
Lead Solder Temperature(1/16 Inch Below Seating Plane)	260°C for 3 sec.	

ELECTRICAL/OPTICAL CHARACTERISTICS AT TA=25°C

PARAMETER	SYMBOL	MIN.	TYP.	MAX.	UNITS	TEST CONDITION	GRADE
Luminous Intensity Per Segment	I _v	4726	5435	6144	μcd	I _F =10mA	K
Luminous Intensity Per Segment	I _v	6145	7066	7987	μcd	I _F =10mA	M
Luminous Intensity Per Segment	I _v	7988	9185	10383	μcd	I _F =10mA	N
Peak Emission Wavelength	λ _p		570		nm	I _F =20mA	
Spectral Line Half-Width	Δλ		30		nm	I _F =20mA	
Forward Voltage Per Segment (except Dp)	V _F	3.8	4.4	5.0	V	I _F =20mA	
Reverse Current Per Segment (except Dp)	I _R			20	μA	V _R =10V	
Luminous Intensity Matching Rate	I _v -m			1.5:1		I _F =20mA	

Notes: Above specification may be changed without notice.

DATE	09/15/05'	SCALE	_____	DRAWING NO.	S-1106BG-B-A	DRAWN	H.Y.T	CHECKED	
UNIT	_____	SHEET NO.	2/2			CUSTOMER		APPROVED	