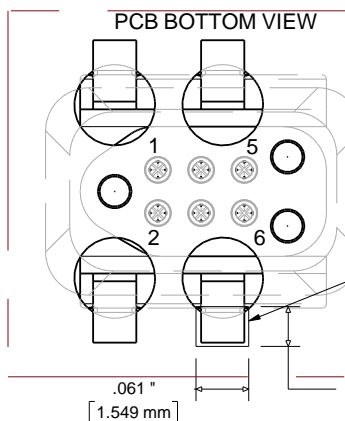
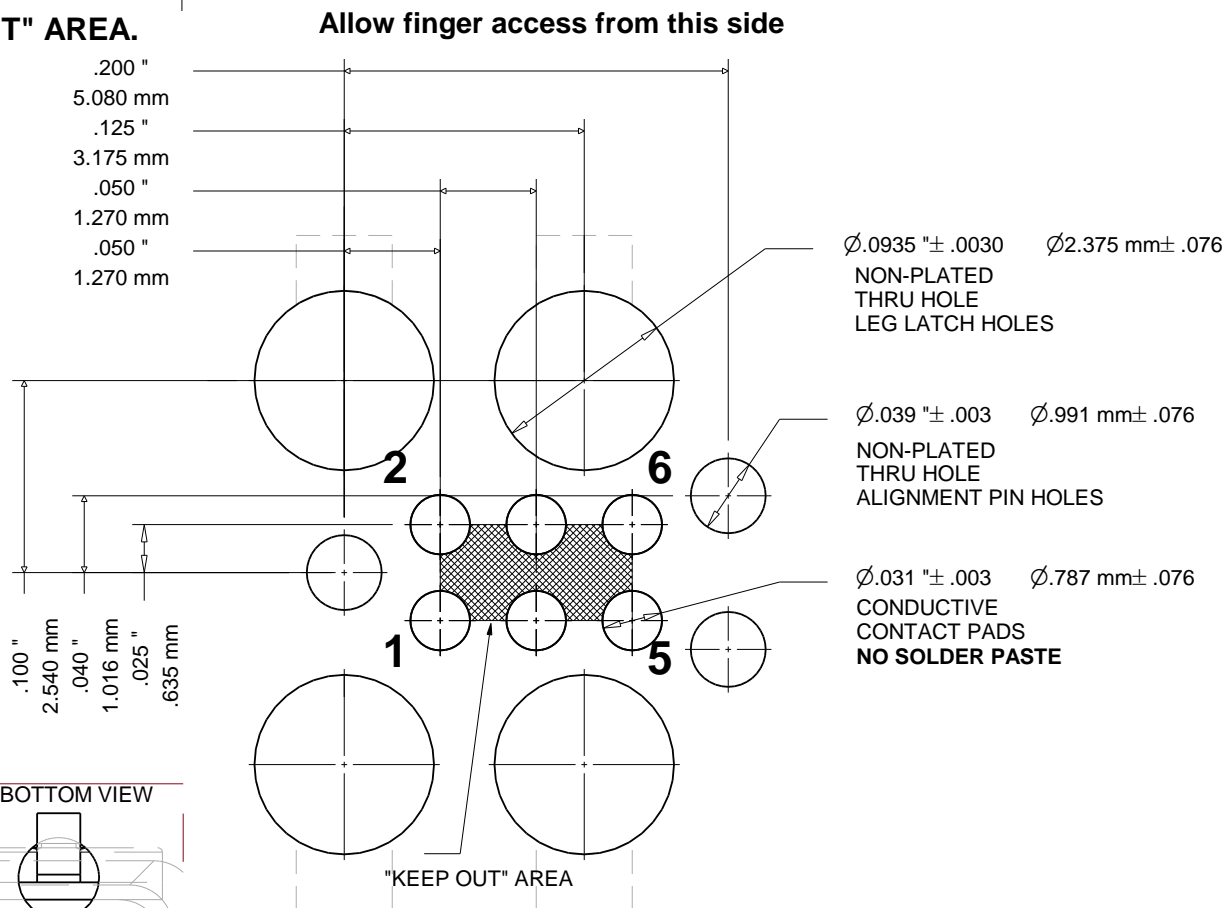


Notes:

1. Allow clearance for finger squeeze access from the two sides shown.
2. No tracks or vias in the shaded "KEEP OUT" AREA.
3. No other track or signal within .02" of any contact pad.
4. Do not allow solder paste on the contact pads. It is essential to eliminate any hole in the solder paste-mask (solder stencil) layer. If this is not possible make the contact pads thru-hole with a finished hole size of .008" or less.
5. Leg and alignment holes may be plated and used as vias but ensure minimum finished hole size meets specified tolerances.
6. To prevent purchasing confusion, please specify DNL in your BOM.
7. If using a proto-board fab that plates all through holes, make sure all holes are defined as plated in the footprint.

FOOTPRINT FOR TC2030-IDC PLUG-OF-NAILSTM CABLE

ZONE	REV	TC2030-IDC-FP	12/05/19	MS/NS
------	-----	---------------	----------	-------



Allow finger access from this side

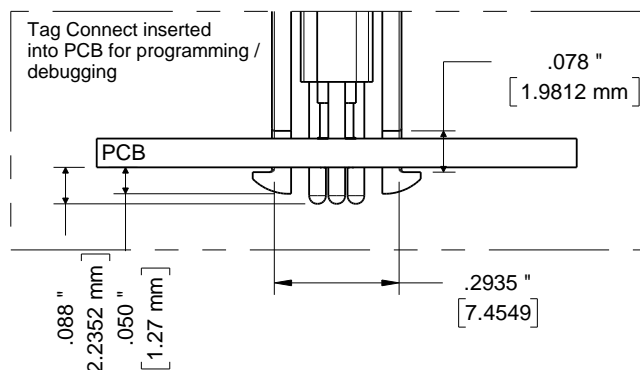
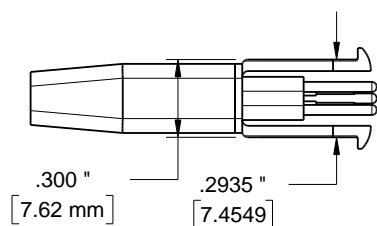
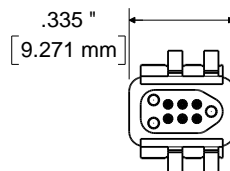
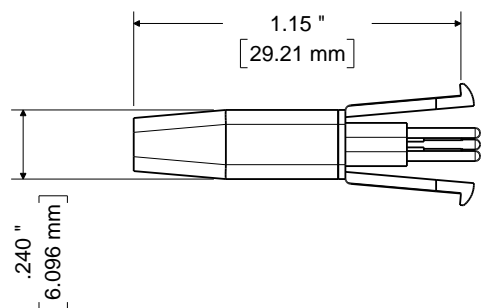
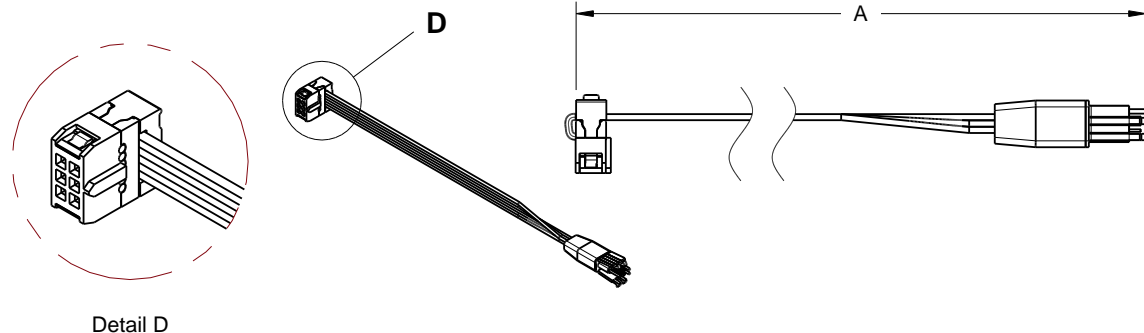
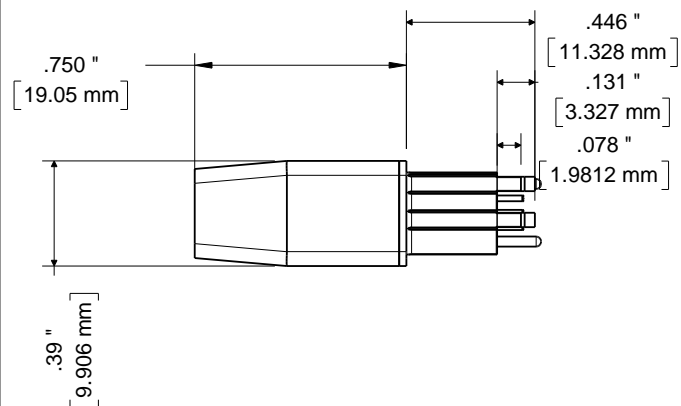
ALLOW A .061 X .046
SQUARE AREA OF
CLEARANCE FOR
EACH FOOT

SIZE	FSCM NO.	DWG NO.	FOOTPRINT FOR TC2030-IDC-FP	REV
A				B
SCALE	www.TAG-CONNECT.com		SHEET 1 of 3	

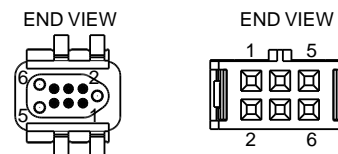
NOTE:
Dimensions subject to change

TC2030-IDC PLUG-OFF-NAILS™ CABLE

ZONE	A	TC2030-IDC	5/17/11	MS
------	---	------------	---------	----



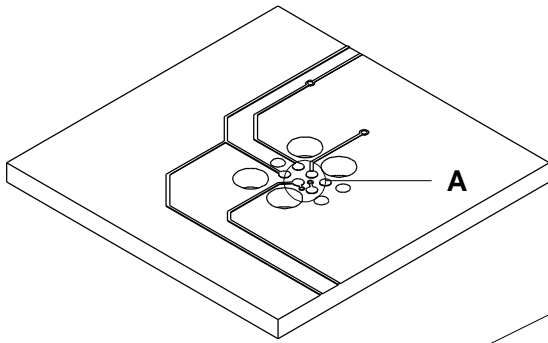
PART NUMBER	A	
	IN	MM
TC2030-IDC	8.8	225
TC2030-IDC-10	10.5	265



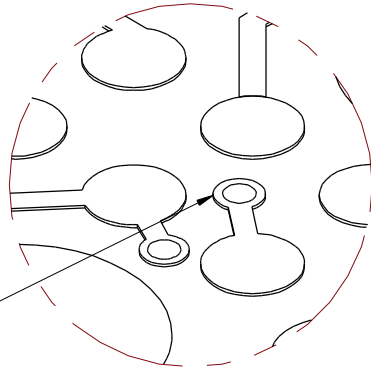
TAG 6 PIN	IDC 6pin
1	1
2	2
3	3
4	4
5	5
6	6

SIZE A	FSCM NO.	DWG NO. TC2030-IDC	REV B
SCALE	www.TAG-CONNECT.com SHEET 2 Of 3		

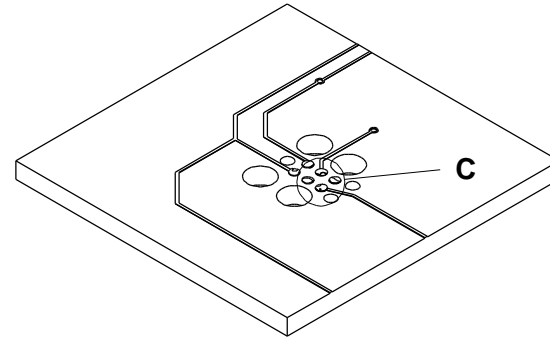
Layout Problems to Avoid



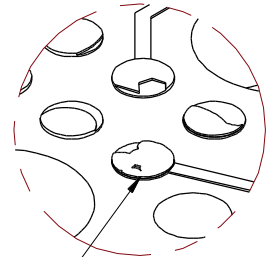
Vias between
contact pads



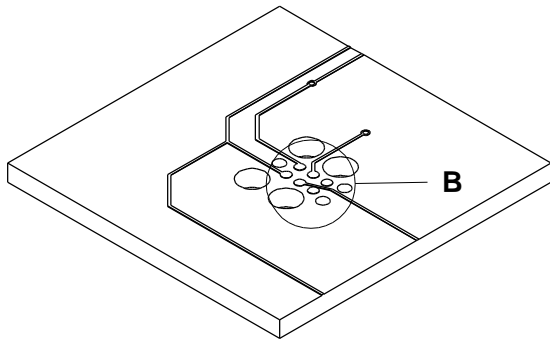
Detail A



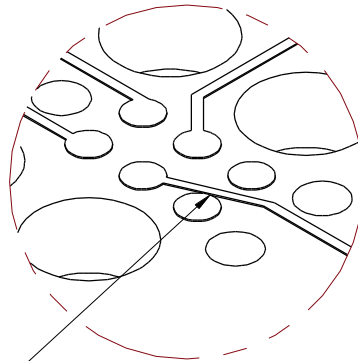
Do not deposit solder paste
on contact pads. View Solder
Paste Mask (Solder Stencil)
layer in pad-stack and eliminate
any hole.



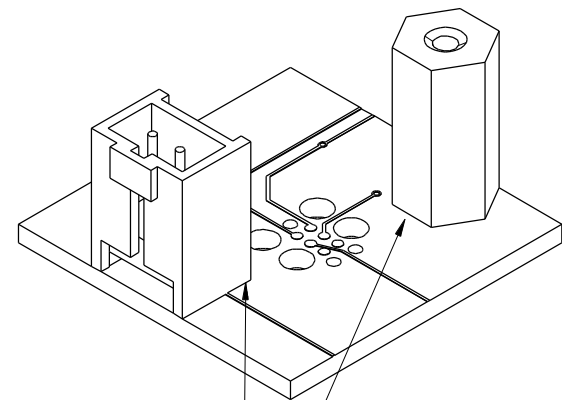
Detail C



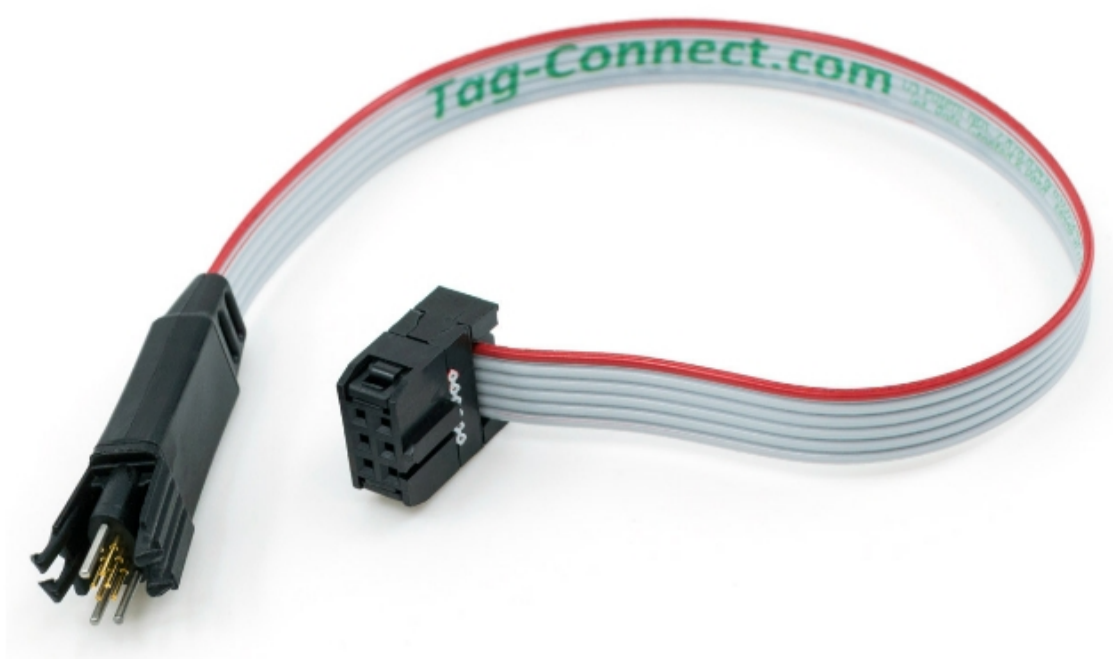
Traces less than .02"
away from contact pad
or in "KEEP OUT" area



Detail B



Large components
blocking finger access to
the Tag-Connect leg clips



TC2030-IDC 6-Pin Tag-Connect Plug-of-Nails™ Spring-Pin Cable with Legs

“Legged” 6-pin Plug-of-Nails™ Cable fitted with a 6-pin 0.1" pitch ribbon connector.

AVAILABLE

1 Add to cart

SKU: TC2030-IDC
Categories: [6 Pin Target](#), [Cables](#), [Cables for ARM Cortex](#), [General Purpose Cables](#), [IDC Family - General Purpose](#)

Description

The TC2030-IDC is our “Legged” 6-pin Plug-of-Nails™ programming cable fitted with a 6-pin 0.1" pitch ribbon connector.

The “Legged” or “With Legs” versions of our cables snap directly into a tiny footprint of holes and pads in your PCB. By eliminating the need for a mating header component, you not only save PCB space but also cost on every board!

See [TC2030-IDC-NL](#) for the “No Legs” version which has an even smaller footprint of about the size of an 0805 SMT resistor.

Popular applications include programming Atmel AVR, many Renesas MCU's (when used with our TC-Renesas E1 / E8a adapter) and Zilog. Also great for bringing our SPI / IIC / RS232 and test signal access.

Also available in 10" lengths ([TC2030-IDC-10](#)). Contact us for 36" length versions of these cables.

Datasheet

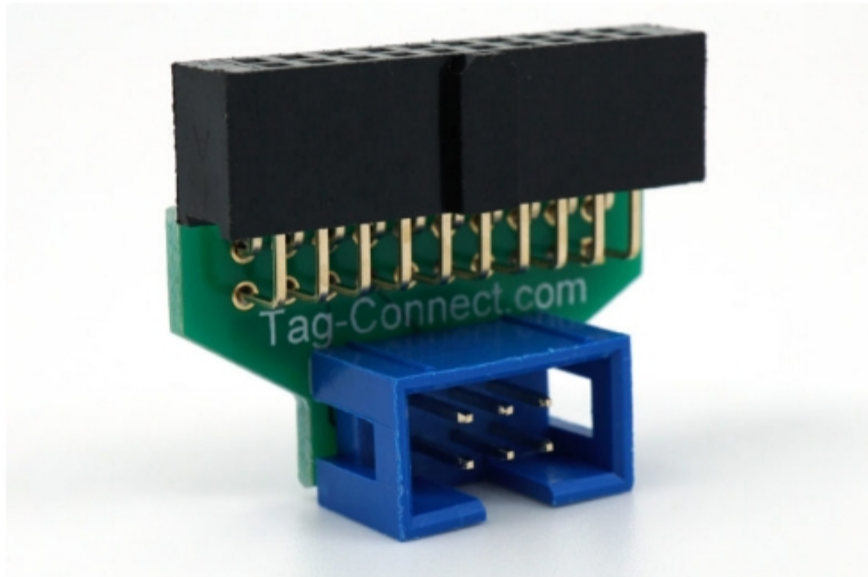
[TC2030-IDC 6-Pin Tag-Connect Plug-of-Nails™ Cable with Ribbon Connector](#)

This product is used in the following debugger/device solutions:

This product is used as part of the following solutions for particular debuggers, protocols and devices. Solutions may involve additional cables, adapters or retaining clips, as well as this product you are viewing now. Click on the solution links to see full solutions and installation instructions where applicable.

- [STLINK-V3SET for ST STM32 using SWD \(via. ARM20\)](#)
- [ST-LINK/V2 for ST STM32 using SWD](#)
- [Segger J-LINK for ARM Cortex using SWD, cJTAG](#)
- [Atmel AVRISP mk.II for Atmel \(Microchip\) AVR using SPI/PDI/μPDI/aWire/debugWIRE](#)
- [Xilinx Platform Cable for Xilinx using JTAG](#)
- [Digilent JTAG-HS2/HS3 for Xilinx using JTAG](#)
- [Lattice HW-USBN-2B for Lattice using JTAG](#)
- [Renesas E1/E2/E8a/E20 for Renesas Various using SWD](#)

Related products



ARM20-CTX 20-Pin to TC2030-IDC Adapter for Cortex

Add to cart



TC2030-IDC-10 6-Pin Tag-Connect Plug-of-Nails™ Spring-Pin Cable with Ribbon Connector – 10" Version

Add to cart



TC2030-IDC-NL

Add to cart

Tag-Connect

433 Airport Blvd, Suite 323, Burlingame, CA 94010, USA
Tel: +1 877-244-4156 Email: support@tag-connect.com

We accept the following cards for on-line payments



Products

Cables

Adapters

Accessories

Dev Tools

What's New

Contact

FAQ

Returns

News

Events

Terms & Conditions

Privacy Policy

Disclaimer