

# Fluke iSee™ Mobile Thermal Camera TC03A/TC03A PRO



Clear Imaging with one shot, Both Near and Far

- 384×288 professional-grade resolution, delivering a high-definition experience
- Professional ISP image algorithms further optimize imaging
- Adjustable focusing lens, allowing for clear imaging of both near and far targets
- -20 ~550 °C range, covering wide applications
- Automatic calculation of 3-phase temperature difference and over-temperature alarms
- Up to 50 Hz frame rate, delivering smooth images without any smear

The brand-new masterpiece of the Fluke iSee™ mobile imaging series—TC03A/TC03A PRO Professional Mobile Thermal Camera. It accurately captures every potential hazard with clear and sharp images; It is suitable for both near and far distances as well as complex scenes with an adjustable focus design; It enhances inspection efficiency comprehensively with the intelligent temperature difference analysis and real-time warning; It is lightweight and portable, and operates stably and reliably. It covers many scenarios such as power inspection, equipment operation and maintenance, and scientific research experiments, making every inspection safer, quicker and easier.

## Professional and descriptive quality

- 384×288 professional-grade resolution, delivering a high-definition experience
- Professional ISP image algorithms further optimize imaging
- ±2% or ±2 °C accuracy to ensure reliable results
- IFOV 1.14 mrad high spatial resolution, capturing tiny hotspots and subtle temperature differences

## Versatile and handy

- Adjustable focusing lens, allowing for clear imaging of both near and far targets
- -20 ~550 °C range, covering wide applications
- Up to 50 Hz frame rate, delivering smooth images without any smear
- 25°×19° FOV, inspection can be completed in one step

## Intelligent, insight into details

- 3-phase temperature difference calculated automatically and displayed in real time
- Audible/visual/vibration alarms on over-temperature for automatic snapshot/recording, responding to abnormal situations promptly
- Comprehensive temperature analysis for spot, line and area, professional-grade thermal imaging software
- Online editing and real-time sharing of images, videos and reports to achieve efficient communication

## Lightweight and portable

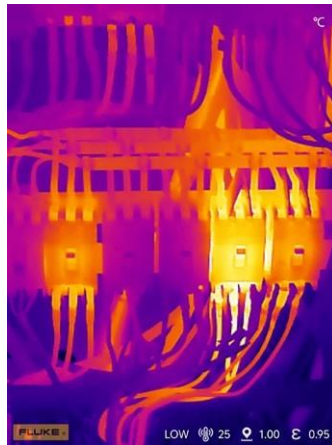
- 15 standard and custom color palettes to display a variety of personalized images
- 55g lightweight, portable and easy to carry
- IP54, dust-proof, water-resistant and oil-resistant
- Optimized Fluke iSee application interface and menu offer a smooth operating experience

## Both professional and user-friendly

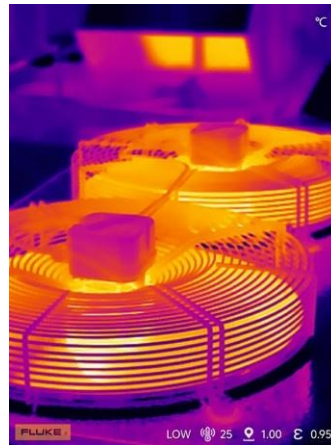
## Fluke iSee™ Application Scenarios



Circuit boards



Power distribution cabinets



Fans



Power transmission lines

**Near**

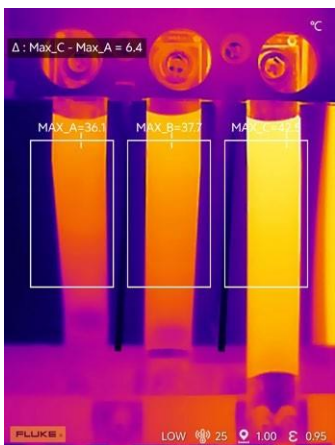
**Far**

0.25 m

20 m

## **iS** Fluke iSee™ application

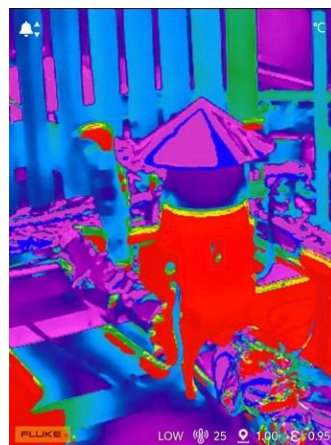
Integrated key functions of a professional thermal camera: shooting, measurement, analysis and sharing.



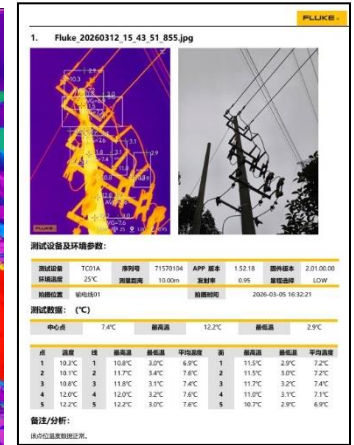
Automatic calculation of 3-phase temperature difference



Personalized color palettes



Over-temperature area alarm



Generating and sharing reports in real time

## How to download the Fluke iSee™ application



For Android devices, please scan the QR code above to download it  
Fluke iSee™ application

\* Android™ 6.0 / HarmonyOS 2.0 and above supported, and the OTG feature needs to be enabled on the smart device

## Detailed Specifications

	TC03A/9Hz	TC03A/25Hz	TC03A PRO/50Hz
<b>Performance specifications</b>			
IR Resolution	384×288		
SuperResolution	Yes, up to 768 x 576		
Pixel size	12 μm		
Temperature range	-20 °C to 150 °C, 100 °C to 550 °C		
Temperature accuracy	± 2 % of rdg or ± 2 °C, whichever is greater (@ 23 °C ± 5 °C ambient temperature)		
Frame Rate	9 Hz	25 Hz	50 Hz
Focal length	10.5 mm		
Focusing mode	Manual		
Nonuniformity Correction (NUC)	Manual / Auto		
Thermal sensitivity (NETD)	50 mK		45 mK
Spectral range	8 to 14 μm		
Field of View (FOV)	25°×19°		
Spatial Resolution (IFOV)	1.14 mrad		
<b>General Specifications</b>			
USB Interface	Type C		
Operating system supported	Android and HarmonyOS		
Operating temperature	0 °C to 40 °C		
Storage temperature	-30 °C to 60 °C		
Operating humidity	10% to 90% RH, non-condensing		
Power consumption	700 mW (Typical)		
Ingress protection	IEC 60529: IP54 (with the protective cover for Type-C)		
Operating altitude	2000 m		
Storage altitude	12000 m		
Dimensions	60 mm x 36 mm x 28 mm (L x W x H)		
Weight	55 g		
Warranty	2 years		
<b>EMC Environment</b>			
	IEC 61326-1: Electromagnetic environment for portable equipment		
	CISPR 11: Group 1, Class A		
	Group 1: Equipment intentionally generates and/or uses conductive-coupled RF energy, which is necessary for its internal operation.		
International	Class A: Equipment is suitable for use in all establishments other than domestic and those directly connected to a low-voltage power supply network that supplies buildings used for domestic purposes. There may be potential difficulties in ensuring electromagnetic compatibility in other environments due to conducted and radiated disturbances.  Caution: This equipment is not intended for use in residential environments and may not provide adequate protection to radio reception in such environments.		
Korea (KCC)	Class A Equipment (Industrial Broadcasting & Communication Equipment) Class A: Device meets requirements for industrial electromagnetic wave equipment and the seller or user should take notice of it. This equipment is intended for use in business environments and not to be used in homes.		
America (FCC)	47 CFR Part 15 Subpart B This product is considered an exempt device per clause 15.103.		

### Ordering Information

- Fluke iSee™ Mobile Thermal Camera  
TC03A/9Hz, TC03A/25Hz, TC03A PRO/50Hz

### Standard Accessories

- The TC03A/TC03A PRO Mobile Thermal Camera
- Packaging box
- User manual
- Soft protective bag



**Fluke.** Keeping your world up and running.™

**Fluke Shanghai Corporation**  
For information call: 400-810-3435  
Web access :www.fluke.com.cn

©2026 Fluke Corporation. 3/2026