

Confidential

 **NIPPON CHEMICAL SCREW CO.,LTD.**



What is PEEK?①

PEEK
Polyether ether ketone

Continuous operating temperature
→260° C/500° F
Flammability:
→UL94 V-0

▶ねじり破断トルク / Torsional rupture torque

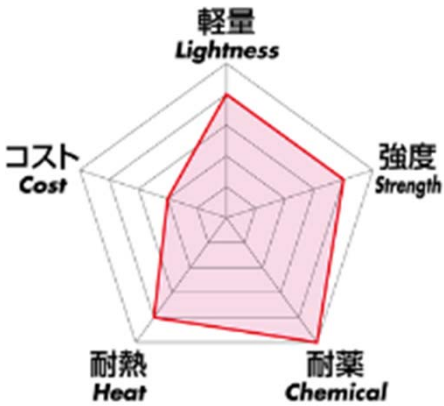
単位 / Unit	M1.7	M2	M2.5	M2.6	M3	M4
N・m	0.038	0.071	0.15	0.15	0.21	0.47
単位 / Unit	M5	M6	M8	M10	M12	M16
N・m	0.96	1.64	3.68	7.90	13.64	-

▶引張破断荷重 / Tensile rupture force

単位 / Unit	M1.7	M2	M2.5	M2.6	M3	M4
N	81	165	264	291	405	738
単位 / Unit	M5	M6	M8	M10	M12	M16
N	1234	1749	3261	5256	7650	-

Material Properties

Lightweight
Water Absorption
Boiling Water Resistance
Low Temperature Properties
Toughness
Creep Resistance
Weather Resistance
Flame Retardancy
Electrical Properties
Friction and Abrasion Resistance
Strength
Chemical Resistance
Heat resistance



What is PEEK?②

CHEMIS PEEK (Peak) is a semi-crystalline, top-performance PEEK is a semi-crystalline super engineering plastic.

It has the highest level of chemical resistance among engineering plastics, Concentrated sulfuric acid is the only commodity chemical that dissolves PEEK.

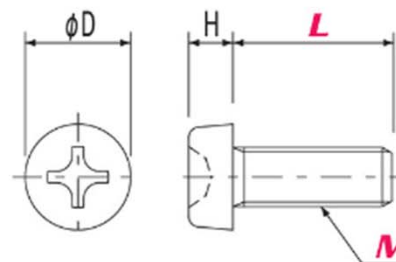
It also has excellent heat resistance, abrasion resistance, flame resistance, and hydrolysis resistance, and is used in the office automation equipment field, automotive field, IC wafer carriers, and LCD manufacturing jigs. We use RoHS2 compliant raw materials.



PEEK/PH Pan Head

<i>M</i>	<i>M1.7</i>	<i>M2</i>	<i>M2.5</i>	<i>M2.6</i>	<i>M3</i>	<i>M4</i>	<i>M5</i>	<i>M6</i>	<i>M8</i>	
ピッチ	0.35	0.4	0.45	0.45	0.5	0.7	0.8	1	1.25	
D×H	2.5×0.5	3.5×1.3	4.5×1.7	4.5×1.7	5.5×2	7×2.6	9×3.3	10.5×3.9	14×5.2	
<i>L</i> (mm)	4	100	100	100	100	—	—	—	—	
	5	—	100	100	100	100	—	—	—	
	6	—	100	100	100	100	100	—	—	
	8	—	100	100	100	100	100	—	—	
	10	—	100	100	100	100	100	100	—	
	12	—	100	100	100	100	100	100	100	
	15	—	—	—	—	100	100	100	100	100
	16	—	—	—	—	100	100	100	100	100
	20	—	—	—	—	100	100	100	100	100
	25	—	—	—	—	100	100	100	100	100
	30	—	—	—	—	—	100	100	100	100
	40	—	—	—	—	—	100	—	—	—
	50	—	—	—	—	50	—	—	—	—

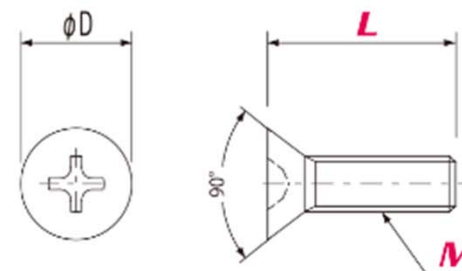
PEEK/PH \textcircled{M} - \textcircled{L}



PEEK/FH Flat Head

<i>M</i>	<i>M2</i>	<i>M2.5</i>	<i>M2.6</i>	<i>M3</i>	<i>M4</i>	<i>M5</i>	<i>M6</i>	<i>M8</i>
ピッチ	0.4	0.45	0.45	0.5	0.7	0.8	1	1.25
D	4	5	5.2	6	8	10	12	16
<i>L(mm)</i>	4	100	100	100	—	—	—	—
	5	100	100	—	100	—	—	—
	6	100	100	100	100	100	—	—
	8	100	100	100	100	100	100	—
	10	100	100	100	100	100	100	100
	12	—	100	—	100	100	100	100
	15	—	—	—	100	100	100	100
	16	—	—	—	100	100	—	—
	20	—	—	—	100	100	100	100
	25	—	—	—	100	100	100	100
30	—	—	—	—	100	100	100	100

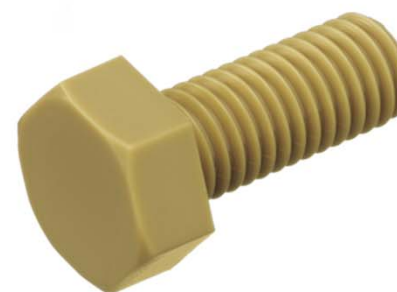
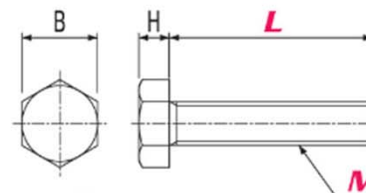
PEEK/FH (M)-(L)



PEEK/BT Hexagonal bolt

M	M4	M5	M6	M8	M10	M12	
ピッチ	0.7	0.8	1	1.25	1.5	1.75	
B×H	7×2.8	8×3.5	10×4	13×5.5	17×7	19×8	
L(mm)	8	100	—	—	—	—	
	10	100	100	100	100	—	
	12	100	100	100	100	—	
	15	100	100	100	100	50	
	16	—	—	100	—	—	—
	20	100	100	100	100	50	50
	25	100	100	100	100	50	50
	30	—	100	100	100	50	50
	35	—	—	100	100	50	50
	40	—	—	100	100	50	50
	45	—	—	100	100	50	50
	50	—	—	100	100	50	50
	70	—	—	—	—	—	50
100	50	50	50	50	—	—	

PEEK/BT (M) (L)



NIPPON CHEMICAL SCREW CO., LTD.

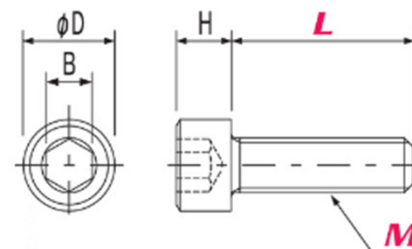


日本ケミカルスクリュー株式会社

PEEK/CB Hex socket head cap bolt

M	M3	M4	M5	M6	M8	M10	M12
ピッチ	0.5	0.7	0.8	1	1.25	1.5	1.75
D×H	5.5×3	7×4	8.5×5	10×6	13×8	16×10	18×12
B	2.5	3	4	5	6	8	10
L(mm)	6	100	100	100	—	—	—
	8	100	100	100	—	—	—
	10	100	100	100	100	100	—
	12	100	100	100	100	100	—
	15	100	100	100	100	100	50
	20	100	100	100	100	100	50
	25	100	100	100	100	100	50
	30	100	100	100	100	100	50
	35	—	—	—	100	100	50
	40	—	100	—	100	100	50
	45	—	—	—	—	100	—
	50	50	—	—	—	—	—
	55	—	—	—	—	50	—
	100	—	50	50	50	50	—

PEEK/CB (M)-(L)



NIPPON CHEMICAL SCREW CO.,LTD.

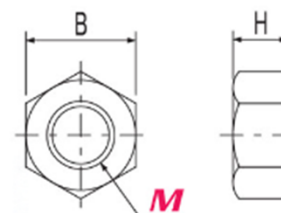


日本ケミカルスクリュー株式会社

PEEK/NT Hex nut

M	M2	M2.5	M2.6	M3	M4	M5	M6	M8	M10	M12
ピッチ	0.4	0.45	0.45	0.5	0.7	0.8	1	1.25	1.5	1.75
B×H	4×1.6	5×2	5×2	5.5×2.4	7×3.2	8×4	10×5	13×6.5	17×8	19×10
-	100	100	100	100	100	100	100	100	100	100

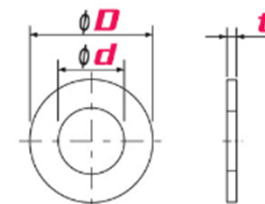
PEEK/NT[®]M



PEEK/W Washer

呼び径	2	2.6	3	4	5	6	8	10	12
d×D	2.1×4	2.7×6	3.2×7	4.3×9	5.3×10	6.4×12.5	8.4×17	10.5×21	13×24
t	0.5	0.5	0.5	0.8	1	1.6	1.6	2	2.5
—	—	100	100	100	100	100	100	100	100

PEEK/W ϕd - ϕD - t



Handling Precautions

- Raw materials used are "RoHS2" compliant. 原材料は「RoHS2」対応品を使用しています。
- Black spots (sludge) may appear on the exterior. 外観に黒点（スラッジ）が発生する場合があります。
- Gate residue at the tip of the screw is less than 5% of the length (L). ネジ先端のゲート残りは長さ（L）の5%以下です。
- Since misalignment of screw pitch occurs during molding, use in combination with a nut of the same material. 成形時にねじピッチのずれが生じるため、同材質のナットと組み合わせて使用する。
- If a nut is not used, the fit with the female screw should be 20 mm or less. ナットを使用しない場合、雌ねじとのはめあいは20mm以下としてください。
- The values in the table are for reference only and are not guaranteed. 表中の数値は参考値であり、保証値ではありません。
- Use a torque screwdriver or torque wrench for tightening. Recommended tightening torque is 50% of the breaking torque value in use. 締付けにはトルクドライバーまたはトルクレンチを使用してください。
- Heat resistance and chemical resistance may vary depending on operating conditions, so be sure to test under operating conditions prior to use.
耐熱性、耐薬品性は使用条件により異なりますので、使用前に必ず使用条件でテストしてください。
- Color may discolor slightly depending on the lot and various conditions. ロットや諸条件により多少変色する場合があります。
- Stock sizes, shapes, and material manufacturers may change without notice. 在庫サイズ、形状、材料メーカー等は予告なく変更する場合があります。