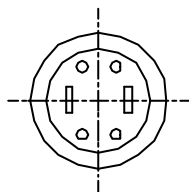
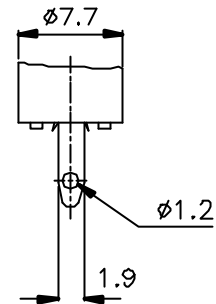
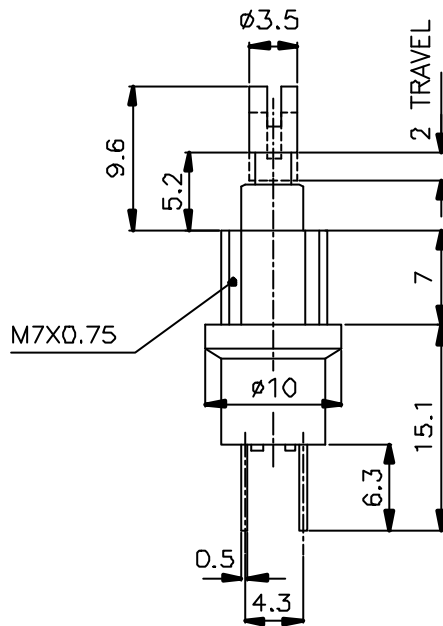
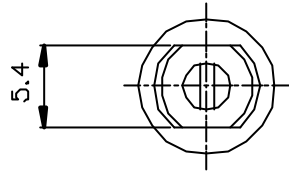


SCHEMATIC



ISSUED	SPECIFICATION (INITIAL)	TITLE: PUSH BUTTON SWITCH(^{PUSH} ON)			
	RATING: DC 50V 0.5A	MODEL NO: PB-11D02-T(S)			
	CONTACT RESISTANCE: Not more than 30mΩ	UNIT: m m	DWN		
	INSULATION RESISTANCE: 500MΩ AT 500V DC	SCALE: 2 : 1	CHK'D		
	WITHSTAND VOLTAGE: AC 500V FOR 1 MIN	TOLERANCE: ±0.20	APPD.		
	OPERATION FORCE: 200±150g				
	SWITCHING LIFE:10000 Cycles(6-10c/m loading)				
BY:	PROMOTIVE INDUSTRIAL CO., LTD. HONG KONG				DRWG NO
DATE:					950446-03

The material contained in this drawing is the property of PIC. Any use other than that specifically authorized by PIC is prohibited. The above drawing is subjected to change for improvement without prior notice.