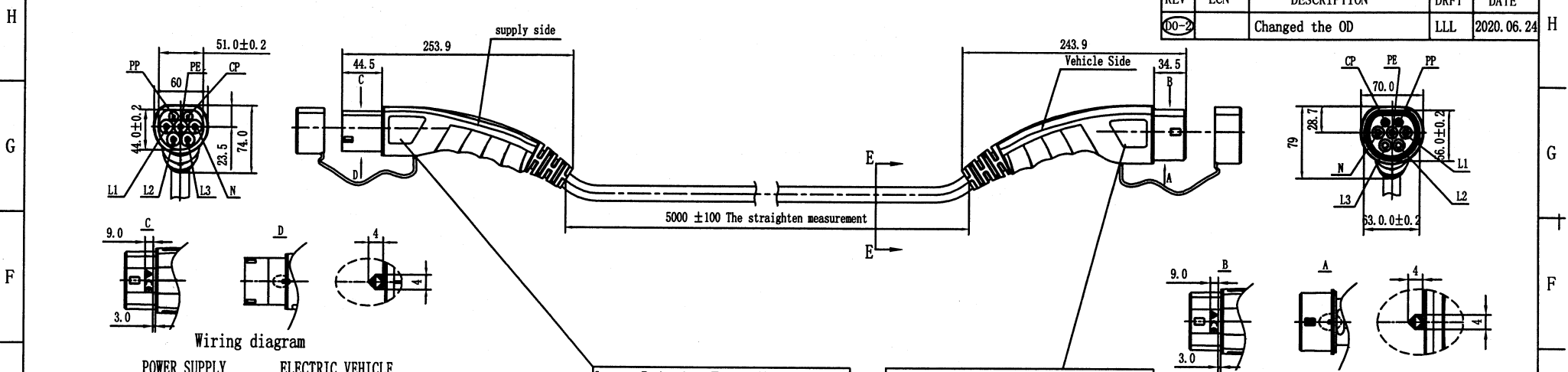


REVISION RECORD

REV	ECN	DESCRIPTION	DRFT	DATE
DO-2		Changed the OD	LLL	2020.06.24



Wiring diagram

POWER SUPPLY

ELECTRIC VEHICLE

L1 6mm <sup>2</sup> Brown		L1 6mm <sup>2</sup> Brown
L2 6mm <sup>2</sup> Black		L2 6mm <sup>2</sup> Black
L3 6mm <sup>2</sup> Gray		L3 6mm <sup>2</sup> Gray
N 6mm <sup>2</sup> Blue		N 6mm <sup>2</sup> Blue
PE 6mm <sup>2</sup> Yellow/Green		PE 6mm <sup>2</sup> Yellow/Green
PP RC=220Ω ±3%		PP RC=220Ω ±3%
CP 0.75mm <sup>2</sup> Red		CP 0.75mm <sup>2</sup> Red

Laser Printing Front Note:

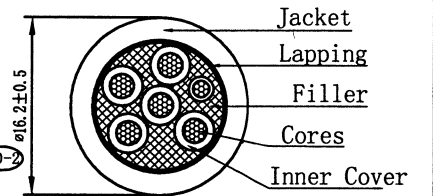
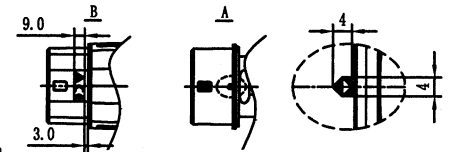
Laser Printing Back Note(Arial) :

MEAC-T-032A-P1-03-5.0M-31AH  
32A 440V AC  
IEC 62196-2:2016  
IP54  
20xxxxxx-xxxx

Laser Printing Front Note(Arial) :

MEAC-T-032A-V1-03-5.0M-31AH  
32A 440V AC  
IEC 62196-2:2016  
IP54  
20xxxxxx-xxxx

Laser Printing Back Note:



SEC E-E

Technical parameters

Rated voltage	440V AC
Rated current	32A
Temperature range	-30℃~+50℃
Insulate resistance	>5MΩ, 500V DC 1Min
Withstanding voltage	L, N AND PE 2500V AC 1Min
	L AND N 2500V AC 1Min
Ingress protection	IP54
The insertion/pullout times	10000 TIMES
Insertion/pullout force	<100N
Reference standard	IEC 62196-2:2016

NOTES:

- Cable: IEC62893-3/EN50620-2017 EV 5\*6mm<sup>2</sup>+1\*0.75mm<sup>2</sup> Black
- RoHS Compliance

Customer Drawing

Size Measure Range	. XX	. X
≤6	±0.05	±0.10
6~30	±0.10	±0.20
30~120	±0.15	±0.30
120~400	±0.20	±0.50
400~1000	±0.30	±0.80
1000~2000	±0.50	±1.20
Angle Measure Range	. XX	. X
	±0.5°	±1.0°

PART NO. : /
APPD: ZX 20200624
CHKD: DT 2020.6.24
DRFT: XF LUO 2019-05-16
THIRD ANGLE PROJECTION

宁波高松电子有限公司 NINGBO DEGSON ELECTRICAL CO., LTD	
NAME: EV ELECTRIC VEHICLE AND EV POWER SUPPLY (32A three-phase) MEAC-T-032A-V1P1-03-5.0M-31A(H)	
TITLE: Customer Drawing	REV DO-2
DRAWING NO. : /	SHEET 1/1
MM (INCH)	DO NOT SCALE DRAWING
SCALE	1:6