

## GX series Connector

Product Item: GX12, GX16, GX20, GX25, GX30

Fit panel aperture: 12 16 20 25 30mm

Contact: 2-20P

Rated voltage: 500V

Rated Current: 15-150A

Contact Material: Brass With Gold Plating

Category: Metal connector



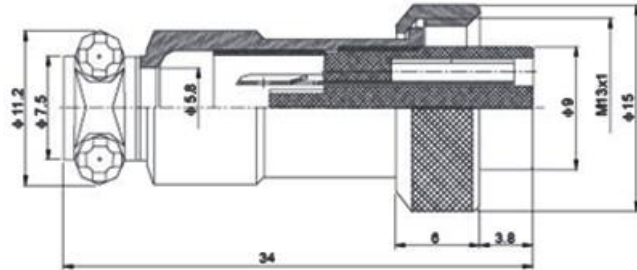
### DESCRIPTION



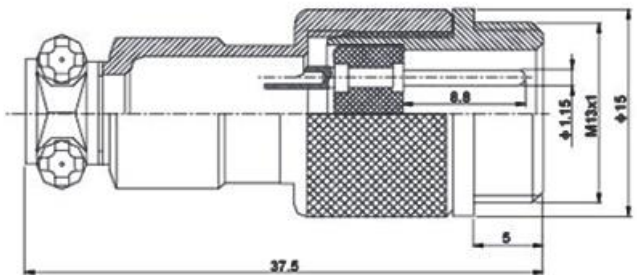
Rated voltage	500v
Relative humidity	40±2°C
working pressure	2kPa
Withstand voltage	1500v
the number of pins	2,3,7,10,14,20,37
Working temperature range	-45~85°C
Mechanical life	500 times
Shock:	10-200Hz, Acceleration 90m/s <sup>2</sup>
Impact	Acceleration 245m/s <sup>2</sup>

# 1

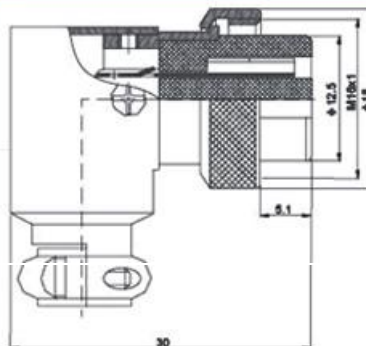
## PRODUCT DETAILS SIZE



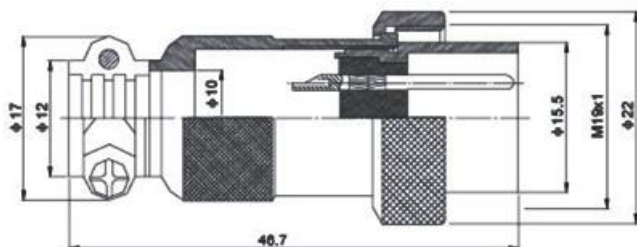
Plug of cable



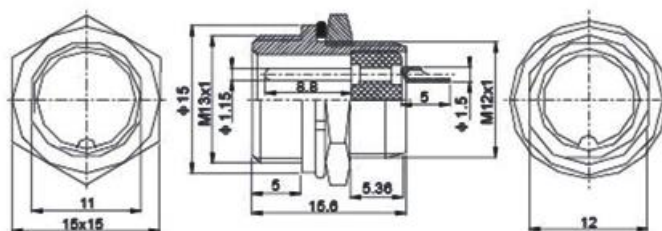
Cable docks the dyadic attachment socket



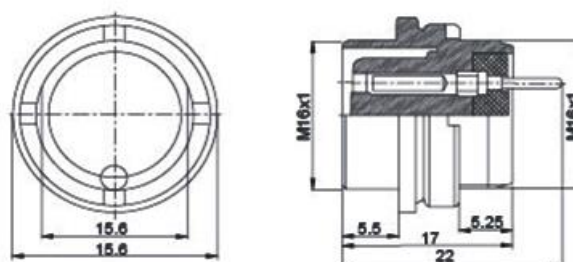
Bend the dyadic cable attachment plug 90 degree



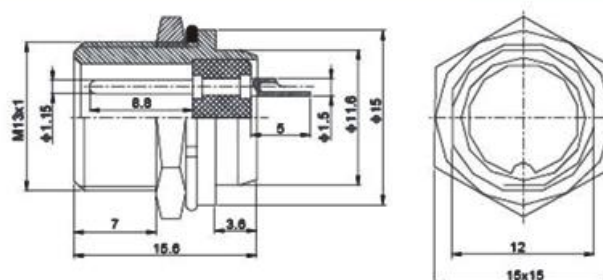
Cable style opposes the dress attachment plug



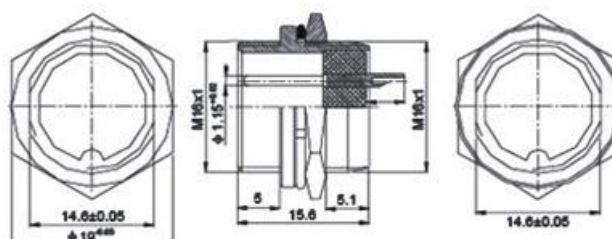
**Be installing a socket**



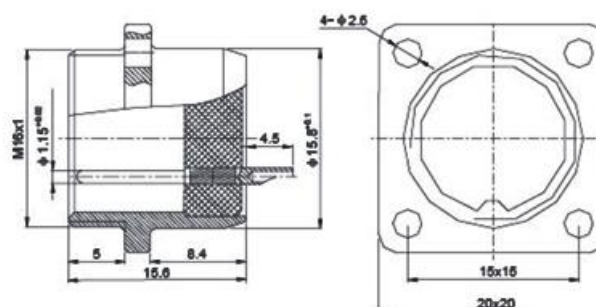
**Oppse the dress socket**



**Penetrate a wall assembling a socket**

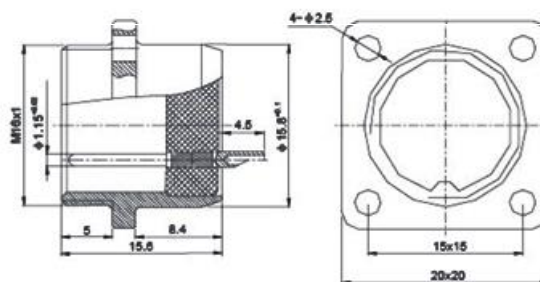


**Pair of machine-made noodle allocation socket**

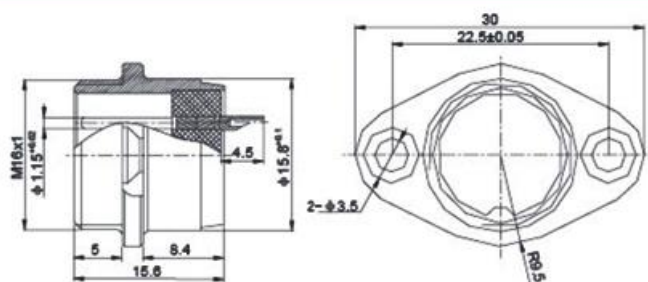


**The flange assembless a socket**

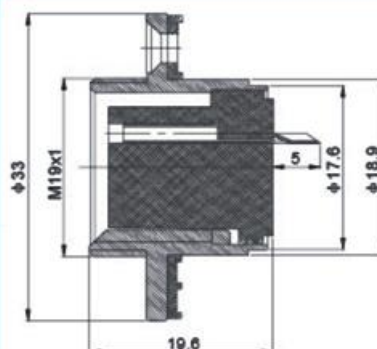




**The flange assembles a socket**



**Binocular flange socket**



**Flange installation  
opposes the dress  
socket**

# 2

## PRODUCT DETAILS

①

**Contact material:**  
Brass with gold plating

②

**housing:**  
Zinc alloy

③

**type:**  
J K

④

**Sealing ring:**  
Silica gel



**3**

## PRODUCT DISPLAY

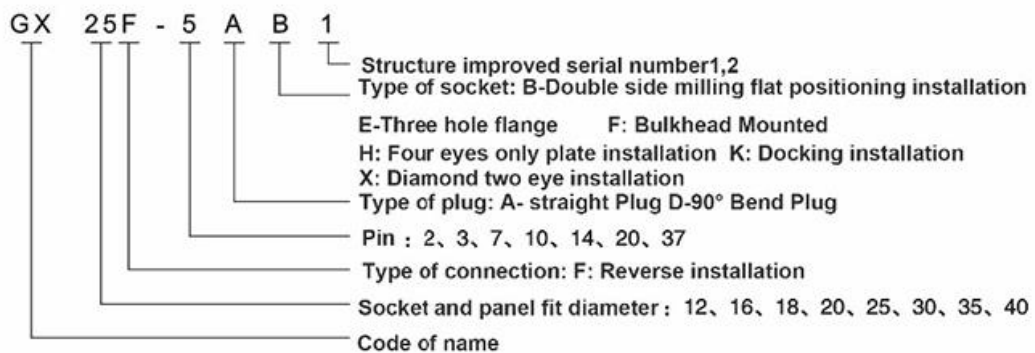




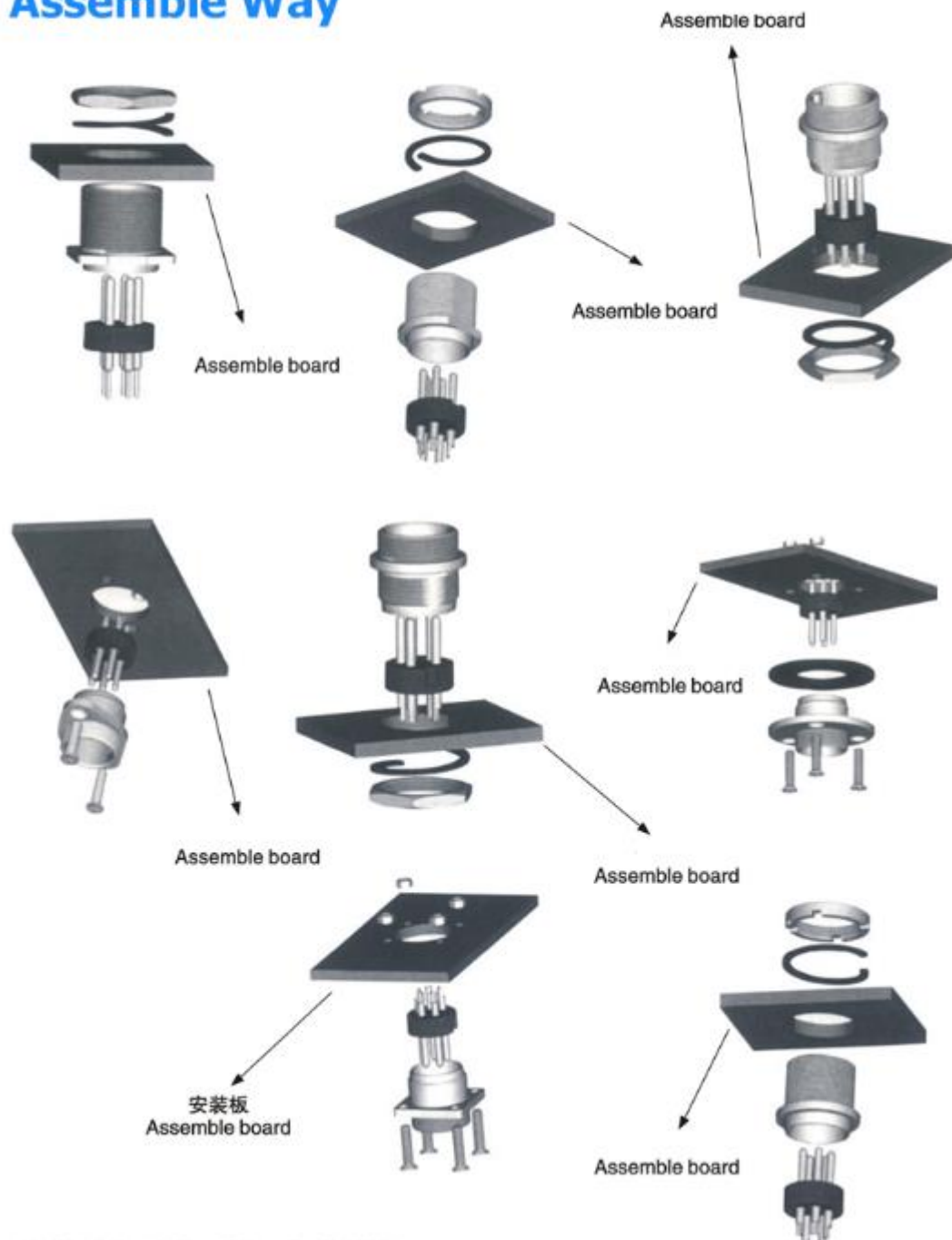
## 4

## HOW TO CHOOSE WHAT YOU WANT

### Model Naming



## Assemble Way





## **HOW TO CHOOSE:**

### **1、 THE NUMBER OF PINS:**

**2P — 12P**

### **2、 TYPE OF PLUG:**

- 1.** A-straight Plug
- 2.** D-90° Bend Plug

### **3、 TYPE OF SOCKET:**

**E:**Three hole flange  
**F:**Bulkhead Mounted  
**H:**Four eyes only plate installation  
**K:**Docking installation  
**X:**Diamond two eye installation

### **4、 SOCKET AND PANEL FIT DIAMETER:**

**12 16 18 20 25 30 35 40**