

RoHS COMPLIANT

REV	ECN NO.	DESCRIPTION	DATE
1		Ref.	SEP. 29' 17
A		RELEASE	OCT. 06' 17

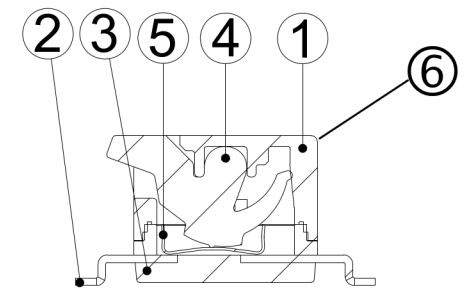
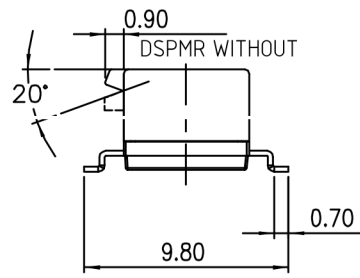
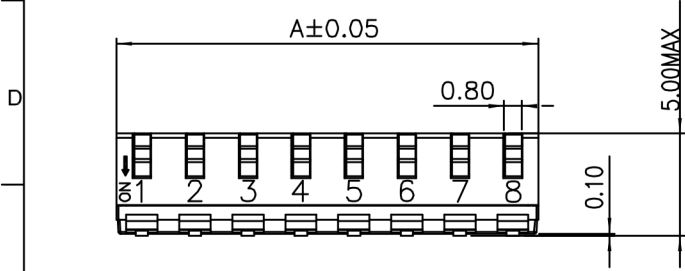


Table 1

NO. OF POS.	DIM. A	DIM. B
10	25.30	22.86
8	20.22	17.78
6	15.14	12.70
4	10.06	7.62
2	4.98	2.54

SCHMATIC(TYP.)

(2,4,6,8,10 POS AVAIL)

ITEM	DESC.	Q'TY	MATERIALS	TREATMENT	REMARK
1.	COVER	1	HIGH - TEMP. THERMOPLASTIC PA-9T UL 94V-0	MOLDED BLACK	-
2.	TERMINAL	1	BRASS	GOLD PLATED	-
3.	BASE	1	HIGH - TEMP. THERMOPLASTIC PA9T UL 94V-0	MOLDED BLACK	-
4.	ACTUATOR	*	HIGH - TEMP. THERMOPLASTIC LCP UL 94V-0	MOLDED WHITE	-
5.	CONTACT	*	COPPER	GOLD PLATED AT CONTACT AREA.	-
6	TAPE		KATPON	-	-

TOLERANCE UNLESS OTHERWISE SPECIFIED		PROJECTION	GOLD-TEK ELECTRIC CO., LTD.	
LINEAR		 UNITS MM SCALE SIZE A4	 TITLE 2.54mm Dip Switch Piano End Stackable SMT Type CPART NO.	PART NO. <b>DSPM(R)**-BK-01(-TUBE)</b> CAD NO. 10302A F:\PDF\MP\MP-0641 SHEET 1 OF 1
ANGLE				
X. ±	X° ±			
.XX ± 0.25	.XX° ±			
.XXX ±	.XXX° ±	<div style="border: 2px solid blue; padding: 5px; display: inline-block;">圖面編號:GTKSD3317-A(1)</div>		
APPD				
CHKD				
DRAW	Z	OCT. 06' 2017		