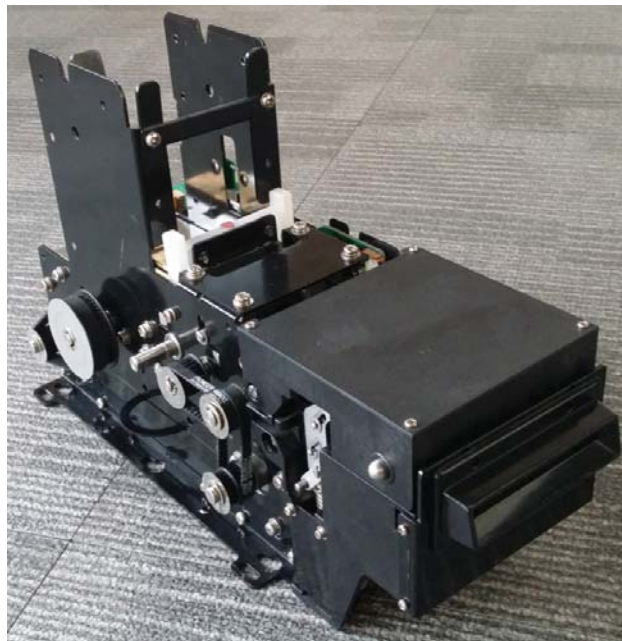
	SPECIFICATION	Model No.	CRT-591
		Date	2015/10/22
	Card Issuing Machine	Ver.	A1.0
		Page	1/6

Card Issuing Machine CRT-591-B223




CREATOR (CHINA) TECH CO., LTD.

6/F, Block C3, ZHIYUAN iPark, No.1001 XueYuan Road, NanShan District, ShenZhen, GuangDong, China.

TEL:+86 755 26710691

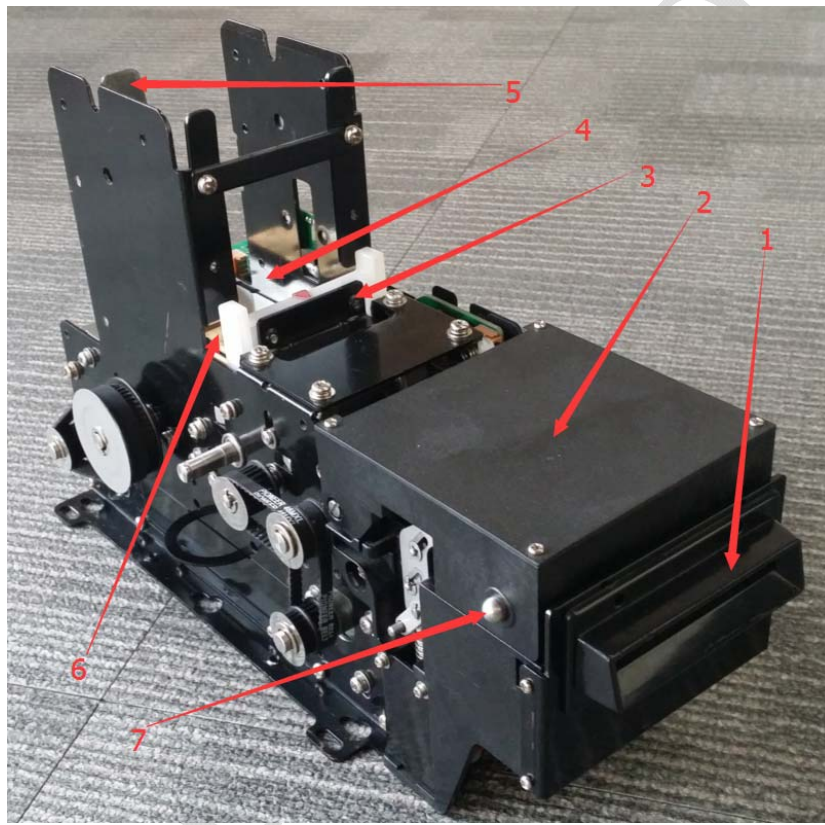
FAX:+86 755 26710105

[Http://www.china-creator.com](http://www.china-creator.com)

	SPECIFICATION	Model No.	CRT-591
		Date	2015/10/22
	Card Issuing Machine	Ver.	A1.0
		Page	2/6

- Welcome to use Creator' s products
- Please carefully read specification before using this card issuing machine.

Main structure of CRT-591-B223:



1----- Bezel component

2----- Read/Write Component

3----- Card Thickness Adjustment


4----- Card dispensing component

5----- Blade for stacker

6----- Card push slider

7----- Press button

Warning: Card issuing machine is forbidden to use above 30V voltage, if using, it will cause card issuing machine destroyed.

	SPECIFICATION	Model No.	CRT-591
		Date	2015/10/22
	Card Issuing Machine	Ver.	A1.0
		Page	3/6

1、OVERVIEW

CRT-571-XM1(WR)-BSJ is card issuing machine with half length SIM card reading/writing operation (Customized product), it can be used separately or combination. Except IC card length, the others is fully compliant with standard contact card, please see its technical criteria.

Main features:

- ① Adopting card pushing way by metal gear、rack slide,make card dispensing more stable, reliable,long life time of card pushing slider.
- ② Card thickness adjustment mechanism: Ex-work setting, only dispensing $0.76 \pm 10\%$ mm standard card.
- ③ Multi-units communication: Support Max.16 sets of CRT-591.
- ④ Small-size card issuing machine for half length IC card reading/writing operation.

2、Customization instructions


This Model adopts card pushing way of metal gear、rack slide.

This model only allows dispensing card which is compliant with standard card thickness.

Card dimension permitted(L*W): $42 \pm 1\text{mm} * 55 \pm 1\text{mm}$

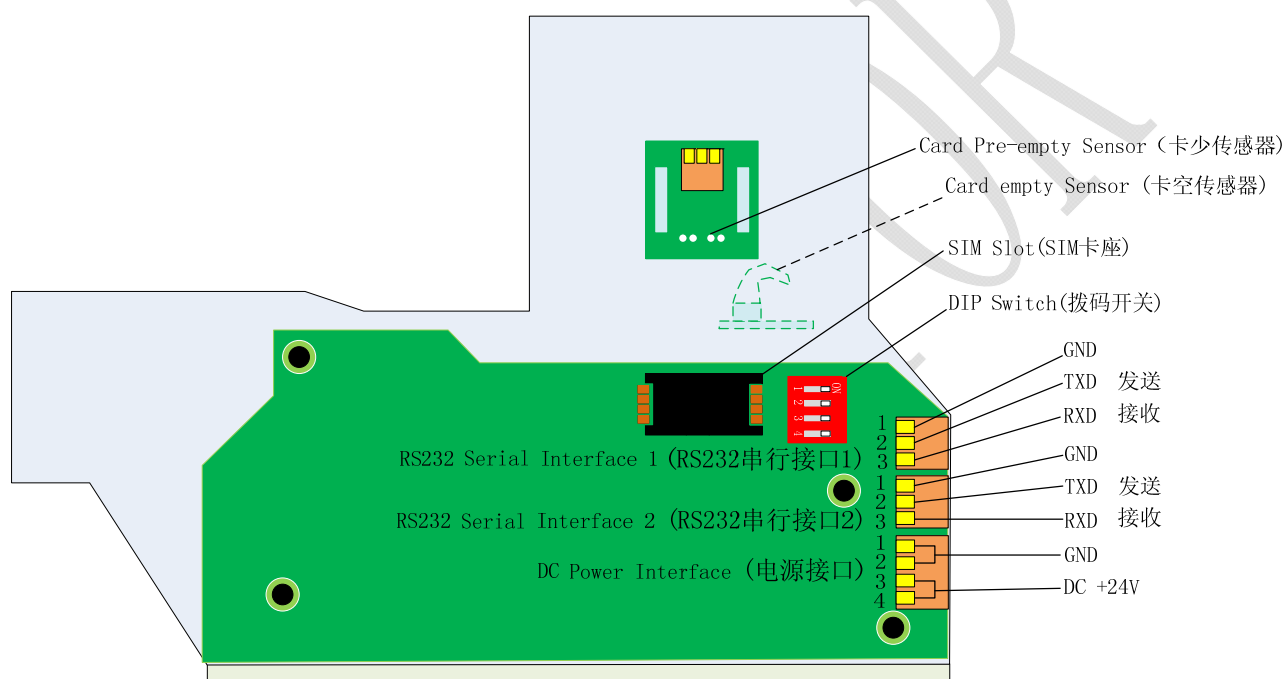
3、Technical specification

Items	Parameter instructions
Voltage	DC $24V \pm 5\%$
Current consumption	Static current: 0.2 A Peak Current: 2 A (Card moving:1.5A)
Interface	RS-232 / USB(HID) interface
Card dimension	Width: $55 \pm 1\text{mm}$, Length: $42 \pm 1\text{mm}$ Thickness: $0.76 \pm 10\%$ mm (Ex-work setting:0.76mm)
Card dispensing speed	Approx.14 cm/s
Card Stacking Capability	120pcs on the base of 0.76mm standard card.
Card Pre-Empty Detection	7~50pcs (on the base of 0.76mm standard card, Default setting: 15pcs)
Life time	Transportation: 500,000times/Min (Card in dispenser from the front to back, then from back to the front which count one times.) IC card pressing device and IC card contact pin: 300,000times/Min
Error rate	IC card: reading/writing card 1,000 times, error rate < 1 times (except dirty card causes error) . Note: The above mentioned card is special made IC card.

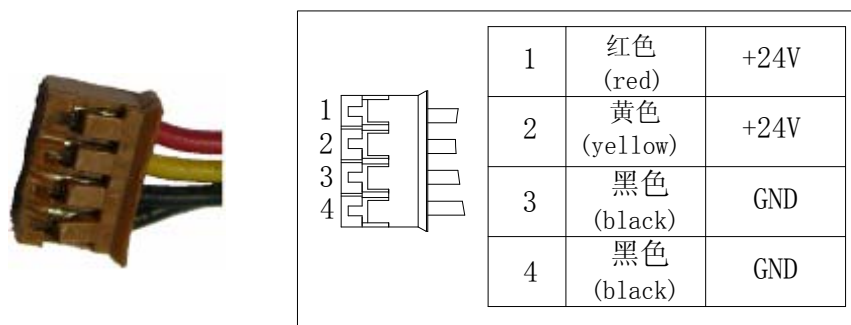
	SPECIFICATION	Model No.	CRT-591
		Date	2015/10/22
	Card Issuing Machine	Ver.	A1.0
		Page	4/6

MTBF	>100,000 hours (only electronic components) Note: 250 times/day, 25 days/month, 300hours/month
Environment conditions	Operation: 0°C~50°C, 0~90 % RH (Non-condensing) Storage: -25°C~80°C, 0~95 % RH (Non-condensing)
Online download	SupportIAP online download
Net weight	Approx.2.0 Kg (not including accessories and package)
RoHS standard	Compliant with RoHS standard.
IC card standard	Compliant with ISO7816 standard. Eg: (AT24C01、24C02、……、24C256; SLE4447、SLE4428; CPU T=0/T=1)


4、Interface instructions



Picture 1. CRT-591 interface sketch map



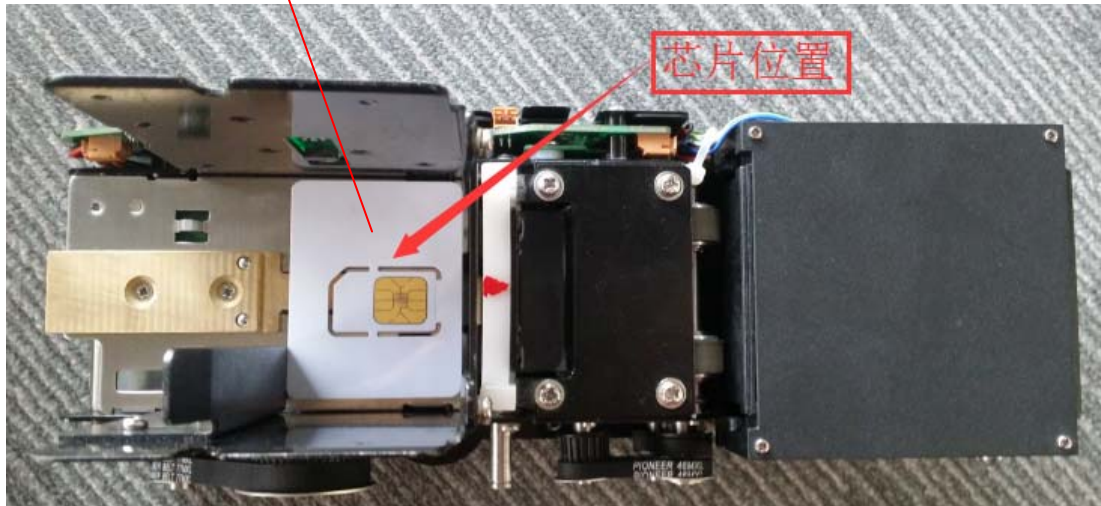
Picture 2. 4PIN Power supply cable

	SPECIFICATION	Model No.	CRT-591
		Date	2015/10/22
	Card Issuing Machine	Ver.	A1.0
		Page	6/6

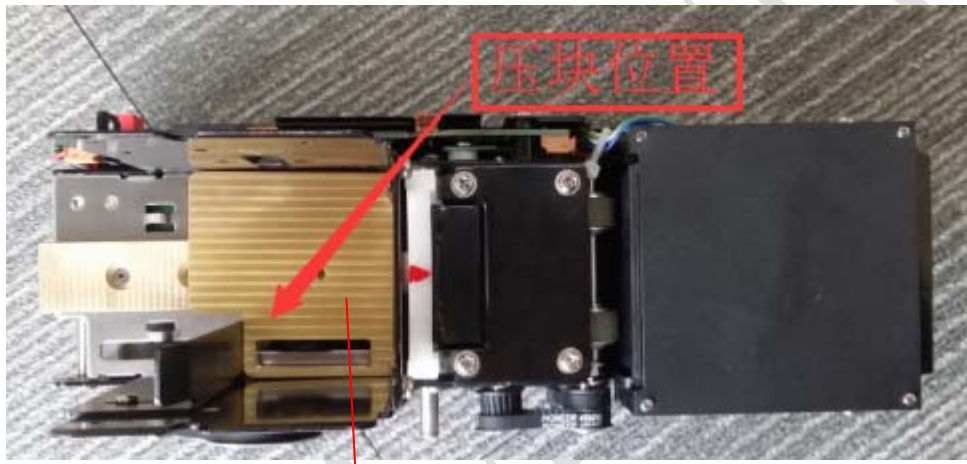
6、Notice

1) IC card position in stacker

The position of chip



2) Iron block position in stacker



The block placement position

2) When using, please kindly note that card thickness have been fixed, don' t adjust it.

3) After placing card into stacker, make sure iron block on cards,

7、Other relevant documents

① Communicational protocol: CRT_571_V10_communicational protocol.PDF

② DLL: CRT_571_V10_DLL SPECIFICATION.PDF