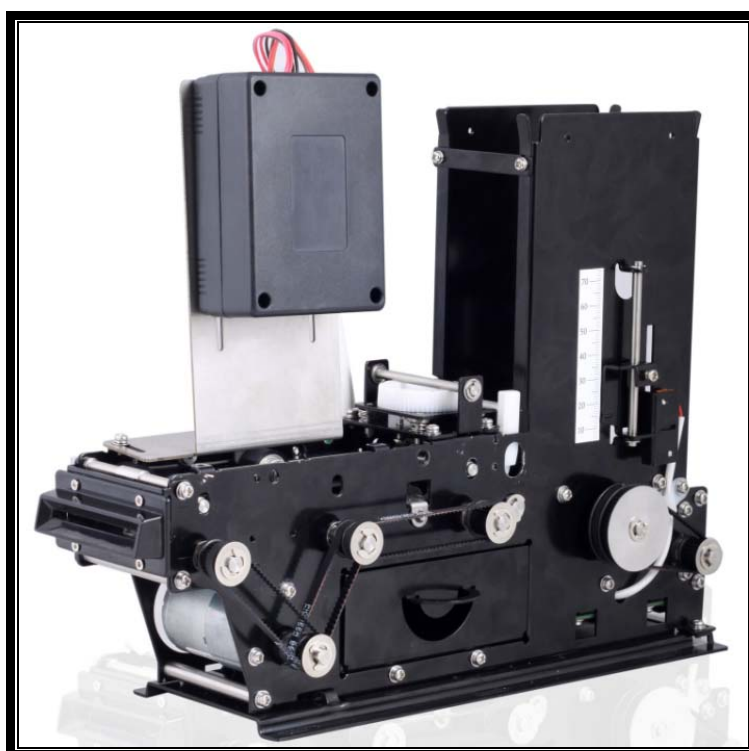
	SPECIFICATION	Model No.	CRT-570
		Date	2011/10/28
	Card Dispenser	Ver.	A1.0
		Page	1/9


PRODUCT SPECIFICATION

CRT-570-(KX2) MB-ANL

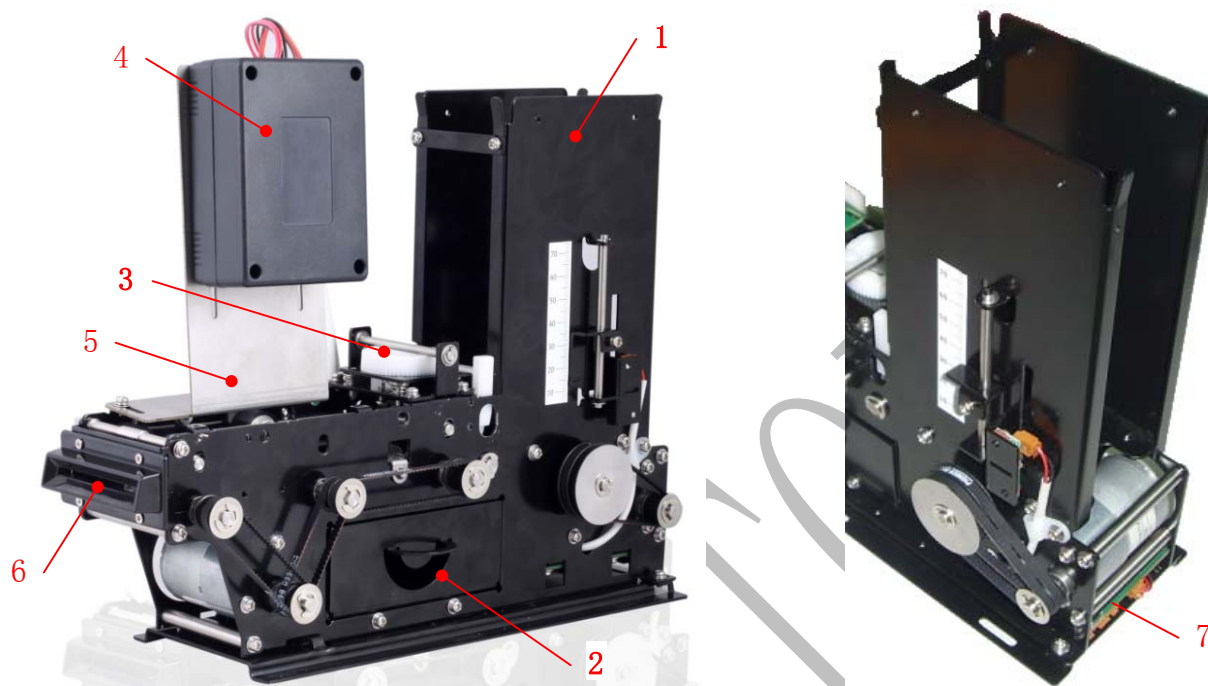


CREATOR (CHINA) TECH CO., LTD

•Add: 2F, M-10 Building, Center Area, Hi-tech Industrial Park, Shenzhen, China
 •TEL:+86 755 26710691 FAX:+86 755 26710105
 •Http://www.china-creator.com


	SPECIFICATION	Model No.	CRT-570
		Date	2011/10/28
	Card Dispenser	Ver.	A1.0
		Page	2/9

CRT-570-(KX2) Components:



- 1----Side Blade
- 2----- Error Card Bin
- 3----Card Thickness Adjust
- 4---- Scan Module
- 5--- Bracket for scanner
- 6-----J Bezel
- 7--- Main PCB

Warning: Power supply never exceed 26Voltage, otherwise the machine will burn down


	SPECIFICATION	Model No.	CRT-570
		Date	2011/10/28
	Card Dispenser	Ver.	A1.0
		Page	3/9

1. Function

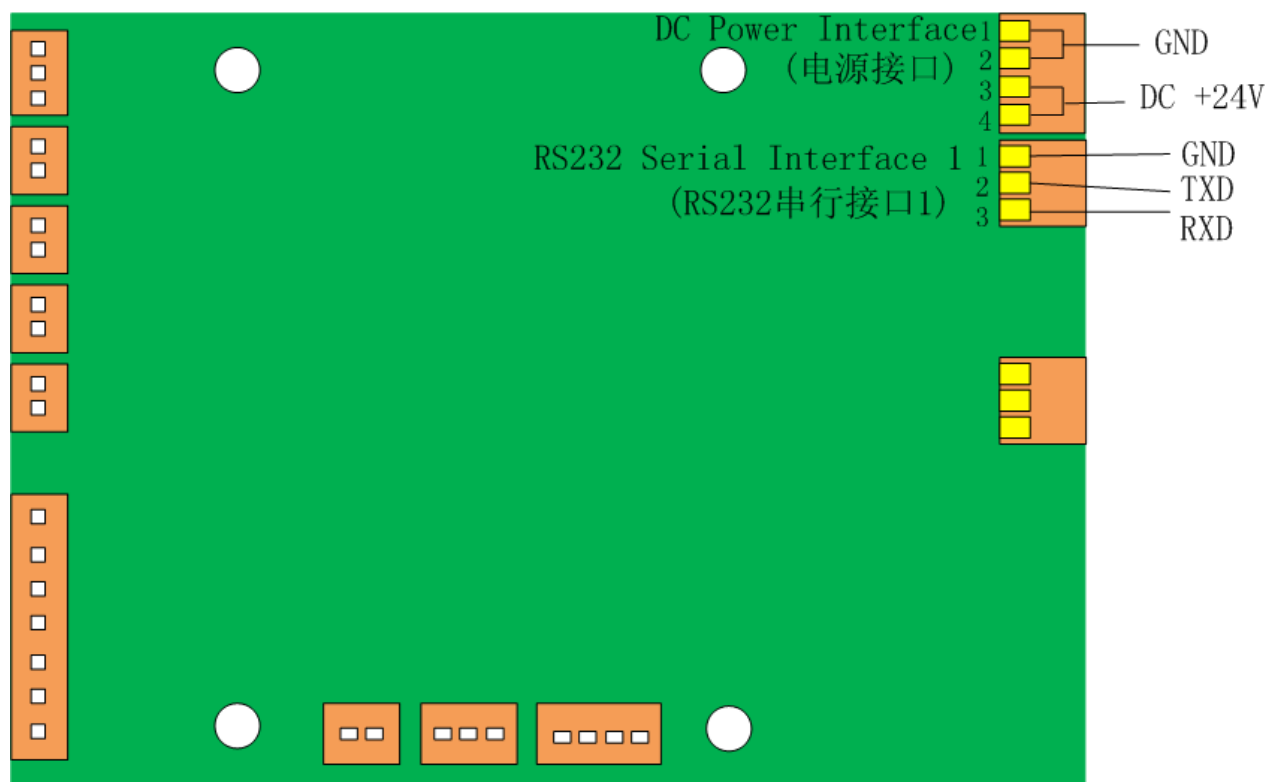
- ◆ Support one-dimension barcode, such as 39cold, EAN code, UPC code, 128 code and 93 code
- ◆ Thickness card adjustment: Unique design for convience
- ◆ Card empty and pre-empty detection and detection for condition of error card bin
- ◆ Card retrieve function
- ◆ Pre-dispense function
- ◆ RS-232C Interface

2. Technical Specification

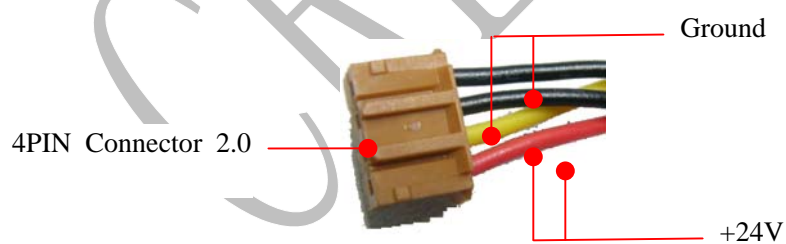
Items	Specification
Power	DC 24V±5% DC 5V ±5% (RFID Module)
Current Consumption	Static Current: 100 mA Peak Current: 1500 mA
Interface Type	RS-232C
Card Dimension	Width:53.92~54.18 mm, Length: 85.47~85.90 mm Thickness: 0.2~2mm (Exwork: 0.76 mm)
Dispense Speed	Approx. 0.3m/s
Load Quantity	185pcs for 0.76mm thickness card Short extention stacker 60pcs Long extention stacker 170pcs Extra long extention stacker 300pcs
Pre-card empty	20-80pcs±2pcs (Exwork: 30pcs of 0.76mm)
Lifetime	Transportation: 500,000 次 Min
Error Rate	Barcode: <1/1000
MTBF	>100,000 hours (Eletric parts) Notes: 250 times/day, 25days/month, 300hours/month
Enviorment	Operation: 0℃~50℃, 0~90 % RH (Non-condensing) Storage: -25℃~80℃, 0~95 % RH (Non-condensing)
Reliability	A. Vibration: No defect in all items of the characteristics under normal condition after exposed15min.each on X, Y and Z directions of 2mm amplitude, from 10 to 50Hz/min vibrate. B. Shock: No defect in all items of the characteristics under normal condition after shock one time on X, Y and Z directions of 294M/S ² , 11ms peak acceleration shock.
On-line Download	IAP on-line downloading
Net Weight	Appromix 2.7 kg (Without package)
RoHS	Compliant to RoHS

	SPECIFICATION	Model No.	CRT-570
		Date	2011/10/28
	Card Dispenser	Ver.	A1.0
		Page	4/9


3. Interface



Picture1. CRT-570 Main Board

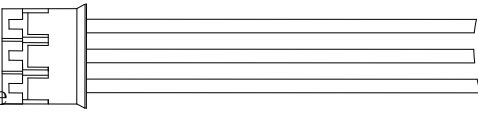


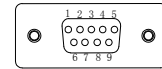
Picture2. 4 PIN Power

	SPECIFICATION	Model No.	CRT-570
		Date	2011/10/28
	Card Dispenser	Ver.	A1.0
		Page	5/9

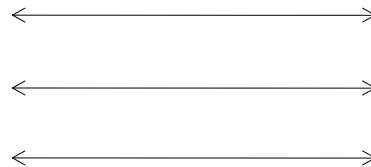
RS232 Com cable

PC DB9 PIN Connector

1. Brown
 2. Red
 3. Orange
- 




1	RXD
2	TXD
3	GND



2	TXD
3	RXD
5	GND

Picture3. Connection between 3 pin com cable and PC DB9 pin connector

	SPECIFICATION	Model No.	CRT-570
		Date	2011/10/28
	Card Dispenser	Ver.	A1.0
		Page	6/9

4. Caution

- 1) Prohibite to warm swap, otherwise the PCB may burn.
- 2) Scanner is fixed on dispenser after production. So in the normal situation, please don't adjust the position of scanner on bracket.
- 3) Do not hit or wave bracket of scanner
- 4) Keep machine clean and non-oil
- 5) The red button on the base is for manual reset, do not push it when the machine is running well

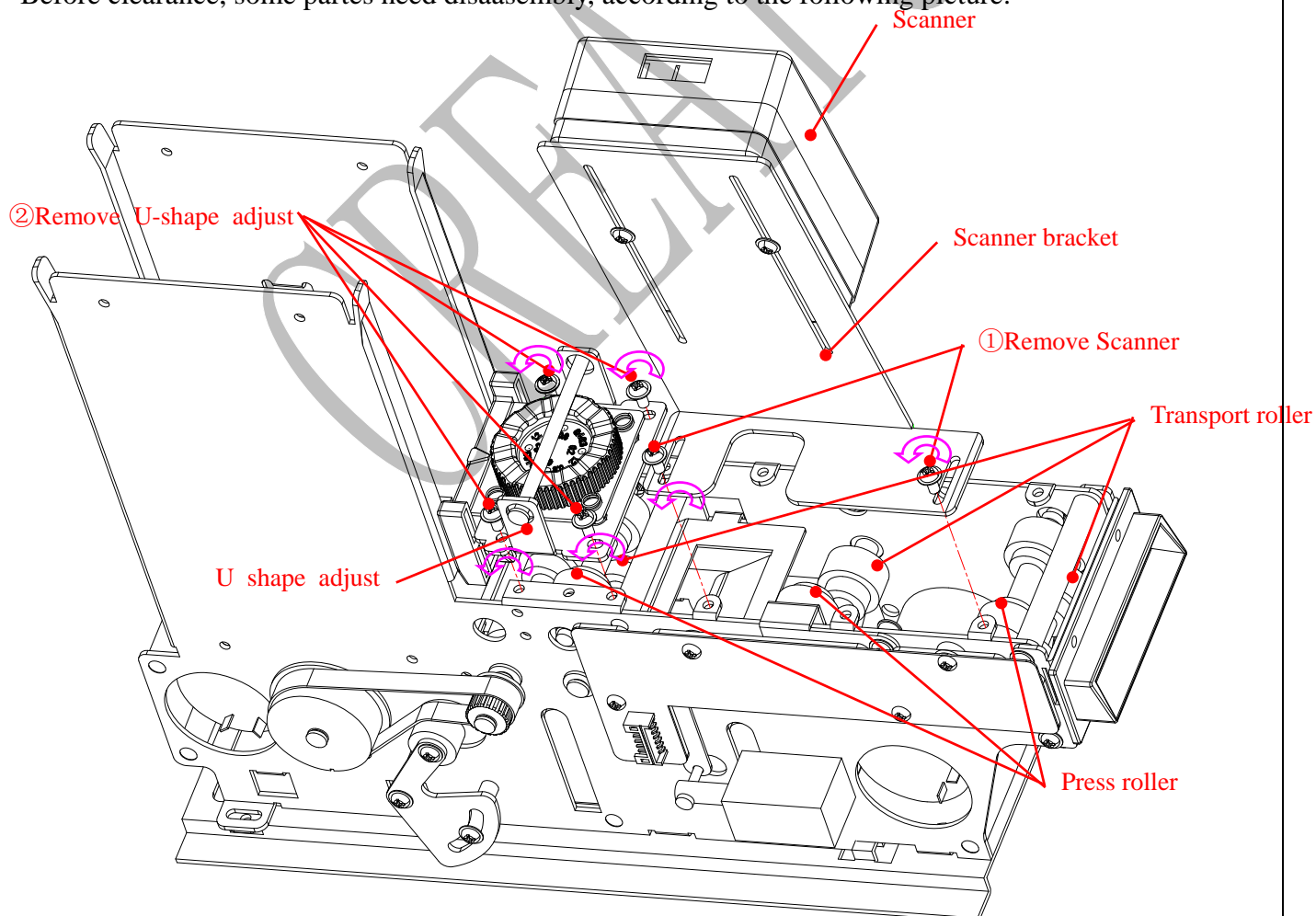
5. Maintenance


After a long time usage, factors such as the machine's transportation mechanism wear and tear, dust on sensor will influence the performance of the machine, and hence it should be maintained on a constant basis. The maintenance instruction is the following:

1) Daily Maintenance Work:

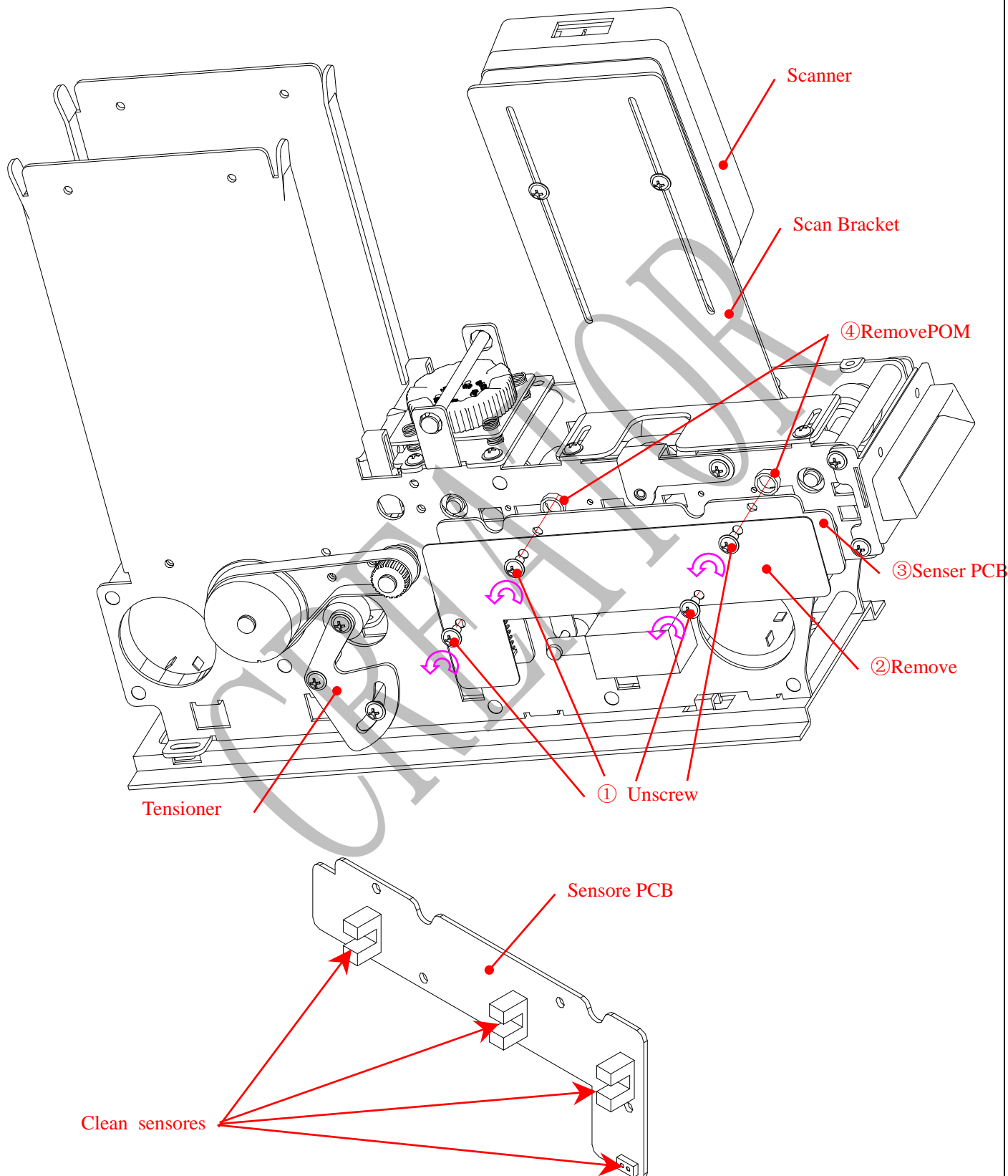
- ① Clean the transportation roller and press roller via alcohol cotton or cloth.


Before clearance, some partes need disassembly, according to the following picture:



	SPECIFICATION	Model No.	CRT-570
		Date	2011/10/28
	Card Dispenser	Ver.	A1.0
		Page	7/9

- ② Clean the sensor board. When sensore board is dusted, the permance of machine will be heavily influence.
Please see the following picture and use brush to clean the scanner



	SPECIFICATION	Model No.	CRT-570
		Date	2011/10/28
	Card Dispenser	Ver.	A1.0
		Page	8/9

③ Check the card is bended or oiled, if the card is bended or oiled, please abandon this card

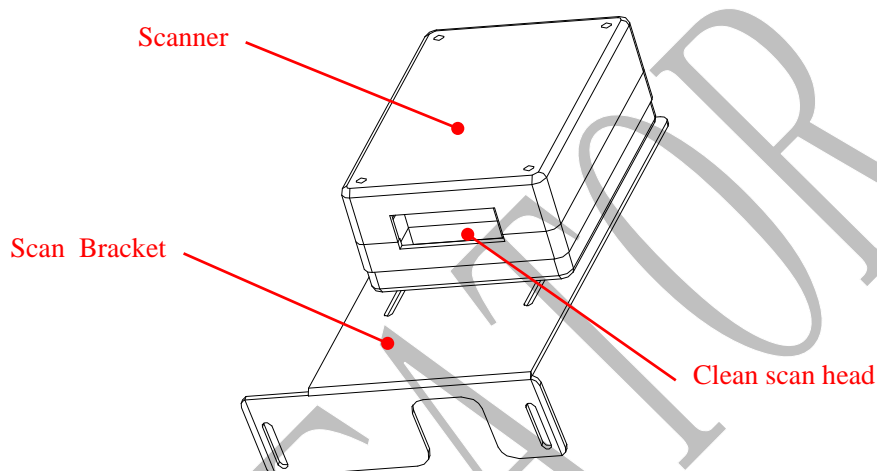
④ Check the mechanism part is loose or not

⑤ Check the belt is loose or not, if loose, please adjust tensioner

2) maintenance routine

① Roller maintenance. Recommend maintenance once every 3,000 dispense

② Scanner maintenance. Use brush to clean the dust on scan head as the following picture



6. Dimensions

