	SPECIFICATION	Model No.	CRT-310
		Date	2010/7/9
	Motorized Card Reader	Ver.	1.0
		Page	1/19

## PRODUCT SPECIFICATION

**CRT-310- (004)**




### **CREATOR (CHINA) TECH CO., LTD**

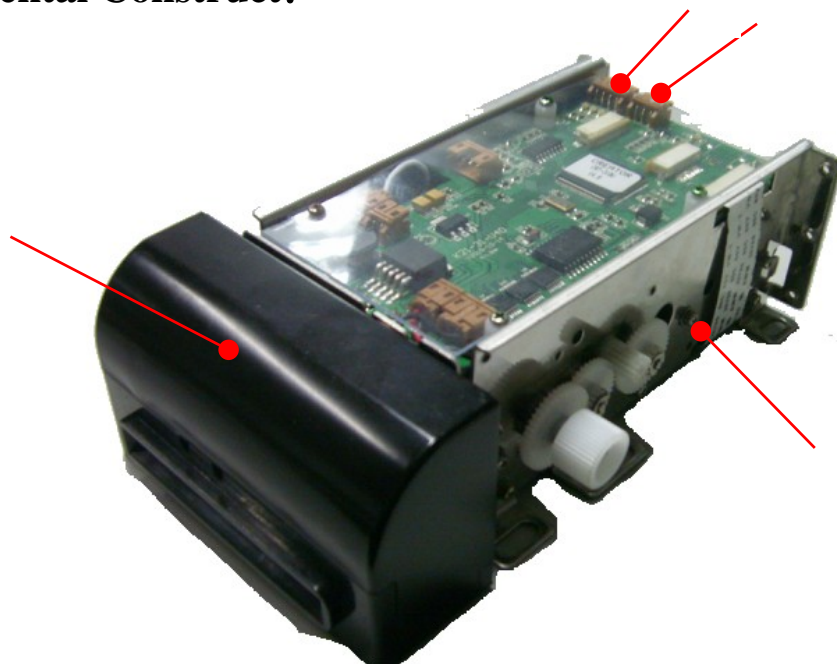
•Add: 2F, M-10 Building, Center Area, Hi-tech Industrial Park, Shenzhen, China

•TEL: +86 755 26710691      FAX: +86 755 26710105

•Http://www.china-creator.com/


	SPECIFICATION	Model No.	CRT-310
		Date	2010/7/9
	Motorized Card Reader	Ver.	1.0
		Page	2/19

## Fundamental Construct:




- 1-----Bezel
- 2-----Transportation components
- 3-----RS-232 communication interface
- 4-----4 PIN Power interface

**Warning: Forbidden to access to power up to 15V, otherwise reader will burn down**

	SPECIFICATION	Model No.	CRT-310
		Date	2010/7/9
	Motorized Card Reader	Ver.	1.0
		Page	3/19

## Contents

<b>1. Overview .....</b>	<b>4</b>
<b>2. Functions .....</b>	<b>4</b>
<b>3. Technical Index .....</b>	<b>4</b>
<b>4. Model Number Specification.....</b>	<b>6</b>
<b>5. Interface Specification.....</b>	<b>7</b>
<b>6. Optical Sensor Position.....</b>	<b>8</b>
<b>7. Stop Position.....</b>	<b>9</b>
<b>8. Operation Description.....</b>	<b>9</b>
<b>9. Power Connection.....</b>	<b>10</b>
<b>10. DEMO Handling Instruction.....</b>	<b>12</b>
<b>11. Maintenance.....</b>	<b>15</b>
<b>12. Caution for Use.....</b>	<b>16</b>
<b>13. Relevant Documents.....</b>	<b>17</b>
<b>14. Structure Dimensions.....</b>	<b>18</b>

	SPECIFICATION	Model No.	CRT-310
		Date	2010/7/9
	Motorized Card Reader	Ver.	1.0
		Page	4/19

## 1. Overview

CRT-310-(004) is 3 in 1 motorized card reader with the following features:

Main Feature:


- 1) 3 in 1: Magnetic Card (Read only), IC card and RF card
- 2) Card automatic capture and ejection
- 3) Various card transportation stop position
- 4) Shutter option: Electronics and mechanism bezel is available for a choice
- 5) Selective accessories: DC24V/DC12V converter plate, PSAM Board
- 6) Fault-Tolerance processing
- 7) Custom service

## 2. Functions

- 1) Magnetic Only read, IC card Read/Write and RF card Read/Write
- 2) Card Automatic capture, ejection and recycling
- 3) Clearance of abnormal card
- 4) RS232 Interface
- 5) Non-standard card processing, power-fail protection

## 3. Technical Index

- 1) Input voltage DC 12V±5%
- 2) Power Consumption Static Current: 110mA  
Peak Current: <1.5A
- 3) Card Transportation velocity Approx. 70cm/s
- 4) Communication Interface RS232
- 5) Card Physical Specification Width: 53.92~54.18 mm Length: 85.47~85.90 mm  
Thickness: 0.4mm~1.2mm (Ex-work: 0.8mm)
- 6) Net Weight Approx. 410g
- 7) Mounting Dimension Refer to chapter of dimensions
- 8) Performance of Reading Magnetic card TC-JI 15% BB 30% SI, TC-A 30%
- 9) Reliability
  - A. Vibration: Frequency: 5~50Hz: Acceleration: 2m/s<sup>2</sup> (0.2G) ; Vibration Direction and time: X, Y, Z Direction 15min: Amplitude: 2mm: Function is not affected when vibrate.
  - B. Shock: 294m/s<sup>2</sup> (30G), 11ms, X, Y, Z Direction Function is not effected during vibration (Rare machine without packaged)

	SPECIFICATION	Model No.	CRT-310
		Date	2010/7/9
	Motorized Card Reader	Ver.	1.0
		Page	5/19

10) Life Time

Transportation: 500,000 times Min (Cycle: Round trip back and forth)

Magnetic Head: 500,000 times Min

IC Card pressure and IC Contact: 300,000 times Min

11) Power dump condition Power supply lower than 10V, more than 50 MS

12) Error Rate

Magnetic card: In normal environment (15~25℃, 35~60%RH), Error rate lower than 1/1000 (Test with Perfect card) Notes: Standard magnetic card, exclusive of manual error

IC Card: Lower than 1/1000 Notes: standard IC card

RF card: Lower than 1/1000. Notes: standard RF card

13) Warp Card the mean height of warp is lower than 2mm

14) MTBF > 100,000 hours (Only electric components)

Notes: 250times/day, 25days/month, 300hours/month

15) Environment Operation: 0℃~50℃, 0~90% RH (Non-condensing)

Storage: -25℃~80℃, 0~95% RH (Non-condensing, please air dry if moisture)

Normal environment: 15~25℃, 35~60%RH

16) On-line downloading: Support IAP Download

17) RoHS Standard Conform to RoHS standard

18) Supported IC Card Standard Conform to ISO7816

E.g. (AT24C01, 24C02, ..., 24C256; SLE4447, SLE4428 CPU T=0/T=1)

19) Supported RF Card Standard Conform to ISO14443-3 (TYPE A: E.g. S50, S70, UL)

Conform to ISO14443-4 (TYPE A CPU: E.g. Mifare plus, Mifare defire)


(TYPE B CPU)

20) Supported Magnetic Standard: Physical Properties: Conform to ISO7810 and 7811

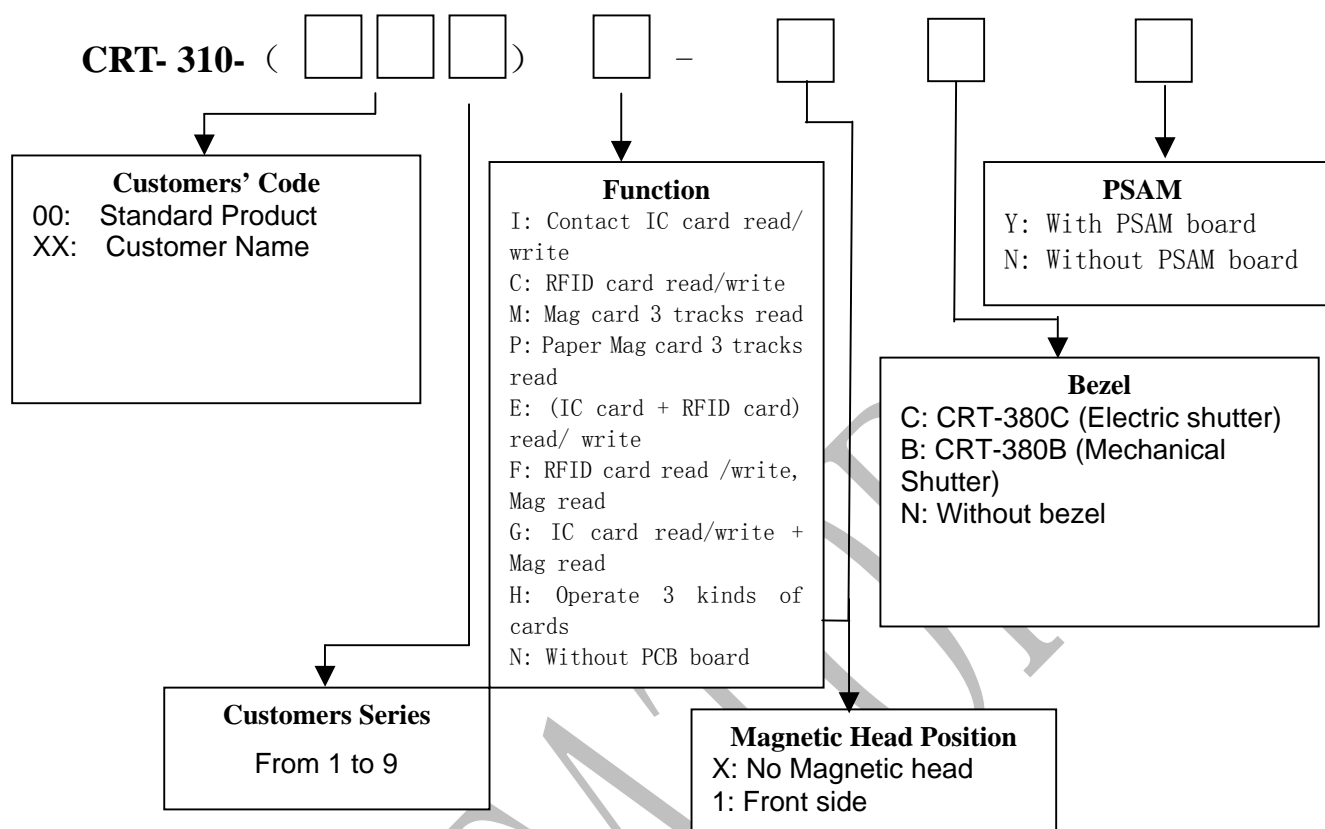
Card Dimension: Conform to ISO7810ID-1

Embossing: Conform to ISO7811-1 ISO7811-3

Record Standard: Conform to ISO7811-2, ISO7811-4, ISO7811-5 -6

	<b>SPECIFICATION</b>	Model No.	CRT-310
		Date	2010/7/9
	<b>Motorized Card Reader</b>	Ver.	1.0
		Page	6/19

#### 4. Model Number Specification



##### 1) Accessory

Name	Model Number	Qty	Notes
4 PIN Power	L14-333-153	1	4PIN, 1.5m (Yellow, red, two black cable)
RS232 Cable	L16-301-253	1	3PIN, 2.5m, DB-9pin

##### 2) Optional

DC24V/DC12V Converter board  
PSAM Board

CRT-301A


CRT-303B

##### 3) CRT-310 Bezel

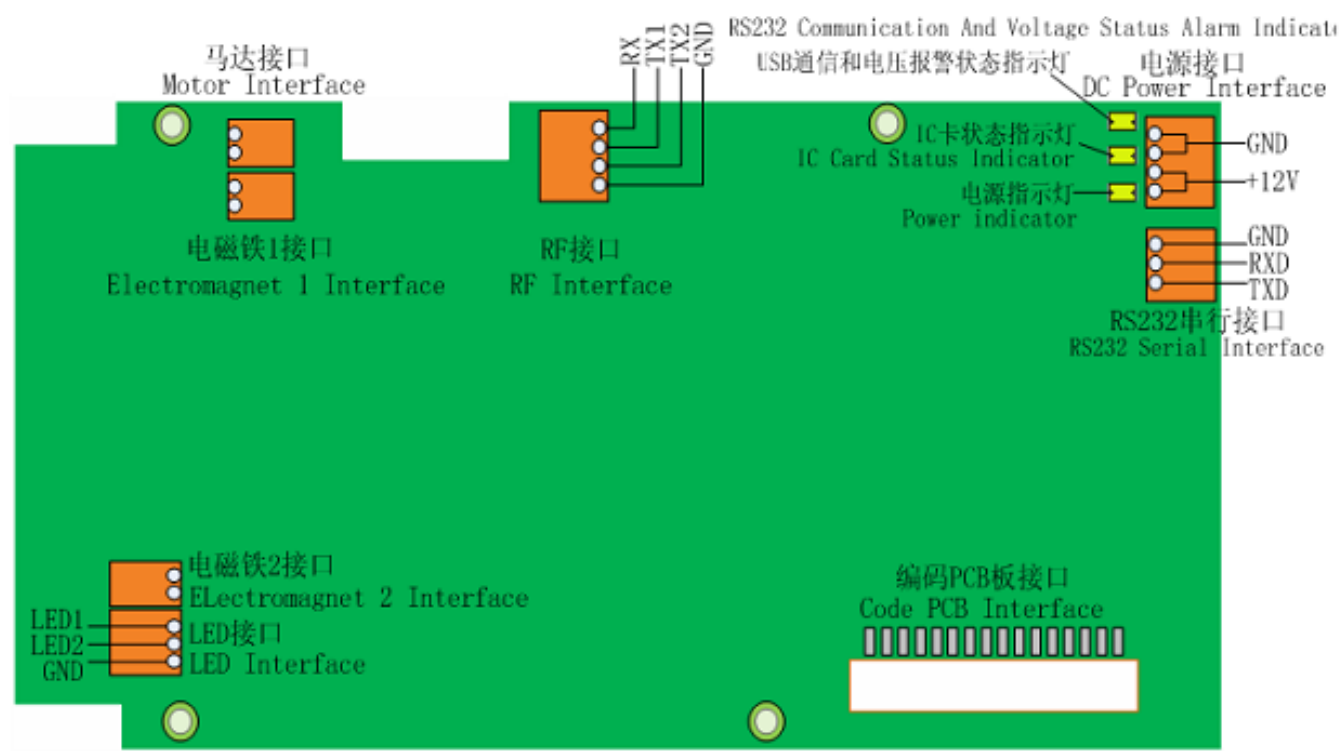
CRT-380C

CRT-380B

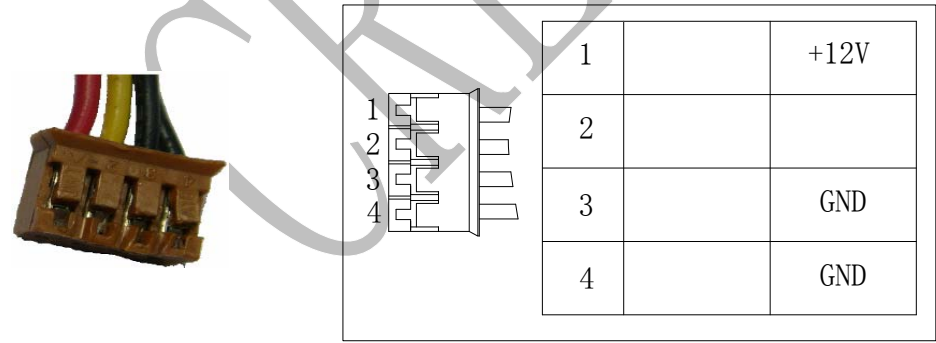


	SPECIFICATION	Model No.	CRT-310
		Date	2010/7/9
	Motorized Card Reader	Ver.	1.0
		Page	7/19


5. Interface Specification

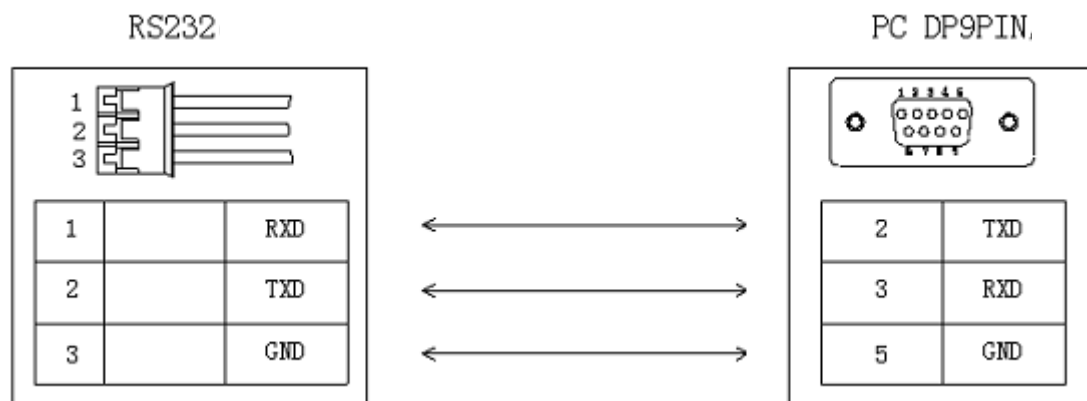


Pic1 CRT-310 Interface



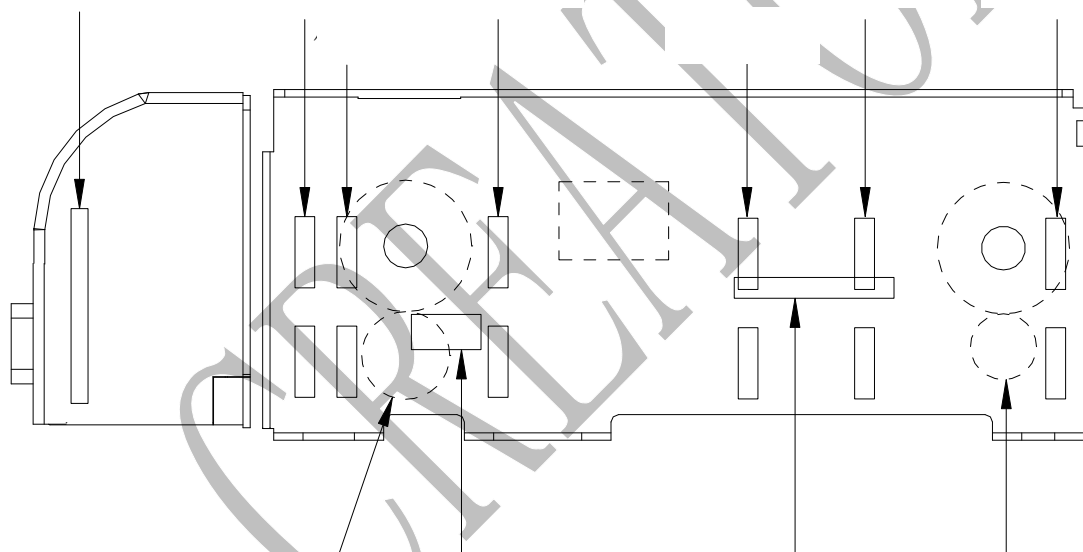
Pic2 4PIN Power Cable

	SPECIFICATION	Model No.	CRT-310
		Date	2010/7/9
	Motorized Card Reader	Ver.	1.0
		Page	8/19




Pic3 3PIN RS232 to DP 9PIN

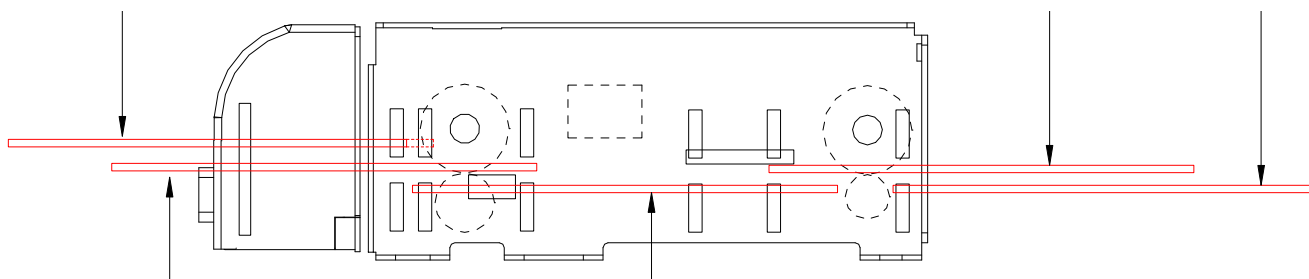
## 6. Optical Sensor Position





	SPECIFICATION	Model No.	CRT-310
		Date	2010/7/9
	Motorized Card Reader	Ver.	1.0
		Page	9/19

## 7. Stop Position



## 8. Operation Description

### 8.1 Card Capture Operation

- 1) After front capture of card, the magnetic information is read automatically and card will stop at defined position
- 2) After inside from rear side, the card will move to defined position

### 8.2 Magnetic Card Reading

After entrance of magnetic card, the magnetic card data should upload to RAM of reader, the magnetic card data will transfer from RAM to upper system according magnetic card reading command.

### 8.3 IC card Reading


IC card should transport to IC card operation position and commands of operation IC card will be available (Including auto detect card type command)

### 8.4 RF Card Reading

RF card should move to IC card operation position and commands of operation RF card command will be available.

### 8.5 Abnormal Card Processing

- 1) Abnormal card is defined as card differ from ISO standard (ISO 7810/7811)
- 2) Abnormal card processing in the case of card entering
  - Move the abnormal card out to bezel
- 3) Abnormal card processing in the case of that the card is within the reader
  - ① For non-standard over-length card, the abnormal card will move to front couple with reset command
  - ② For non-standard over-short card, the abnormal card will withdraw from the rear side couple with reset command.

	SPECIFICATION	Model No.	CRT-310
		Date	2010/7/9
	Motorized Card Reader	Ver.	1.0
		Page	10/19

#### 8.6 Power-Fail Processing

- 1) Four wires power cord (Red - Yellow - 2Black: 12V-Red/Yellow cable, GND-Black) with back up option is provided. The couple of yellow and black wire could use to connect back up power or any UPS/Capacitor group for reserve
- 2) Once power is dump in case of backup power enable. After 1 second, the reader will enter into status of power protection mode. If there is a card inside reader in this mode, the card will be eject out and the error code of power failure will uploading all the while until the power is recovered.
- 3) If power recover(Above 11V) Reset command is needed.


#### 8.7 Error Processing

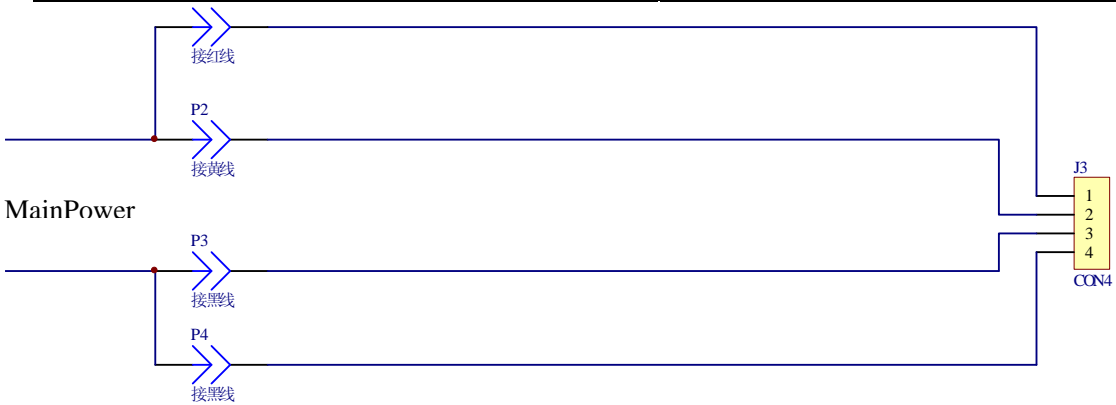
If any error is encountered, reset command is needed to eliminate the error code.

### 9. Power Connection

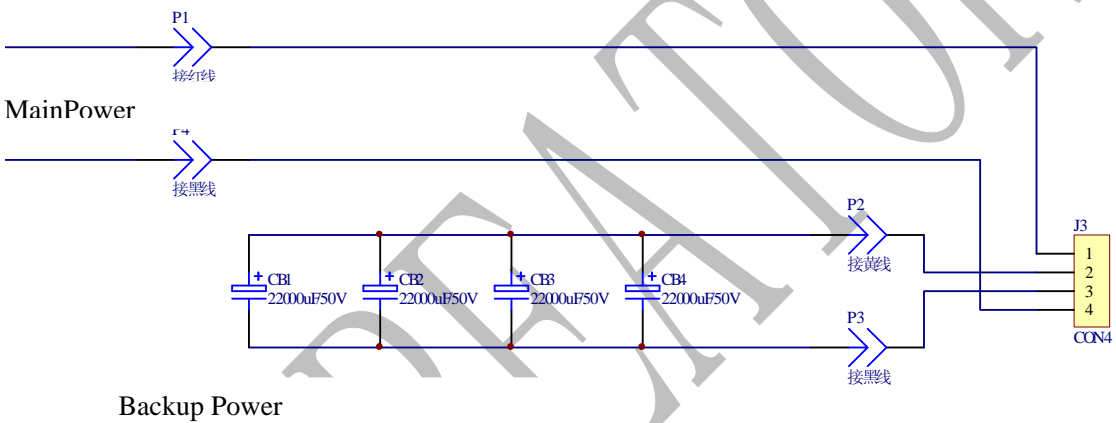
CRT-310-(004) has two ways of power connection

- 1) Sole power (Pic 1)
- 2) Main Power + Backup Power (Pic 2)


	SPECIFICATION	Model No.	CRT-310
		Date	2010/7/9
	Motorized Card Reader	Ver.	1.0
		Page	11/19



Pic 1



Pic 2

	SPECIFICATION	Model No.	CRT-310
		Date	2010/7/9
	Motorized Card Reader	Ver.	1.0
		Page	12/19

## 10. DEMO Handling Instruction

### 1) Wiring Procedure

Insert 3 Pin communication cord first, and then plug in 4 Pin power cord.

### 2) Installation of DEMO software

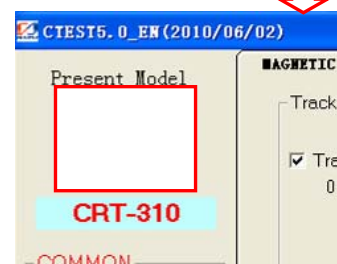
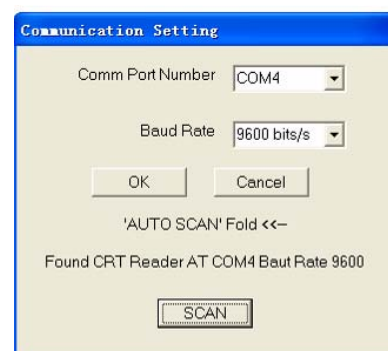
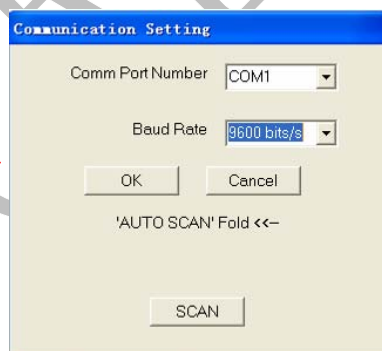
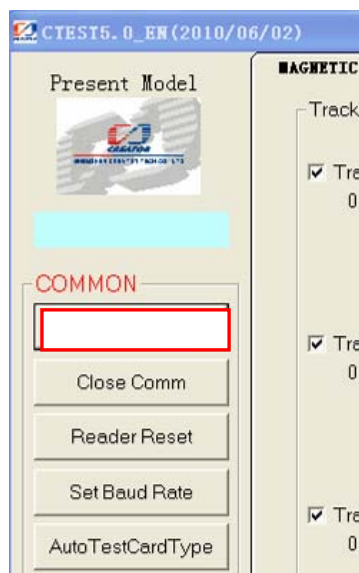
Double click CTEST5.0\_EN\_SETUP.EXE


### 3) Load DEMO Software

- ① Double click DEMO icon
- ② Click Reader option

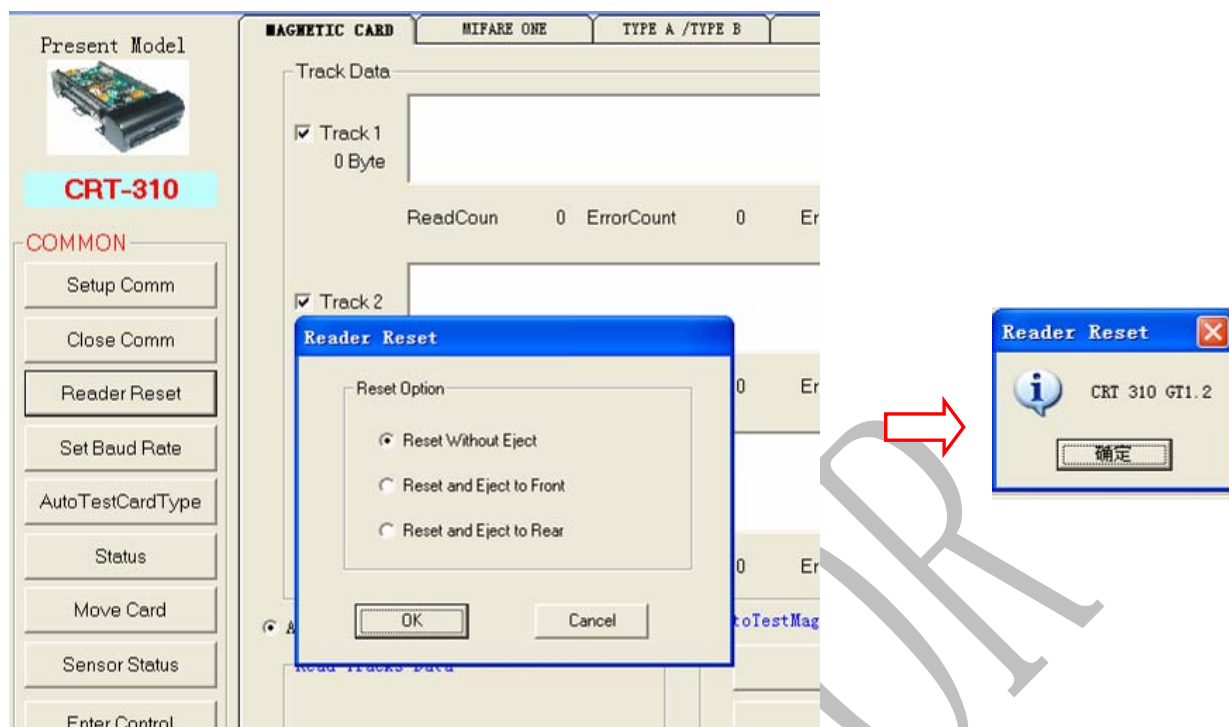


### ③ Configure serial ports: Step by step

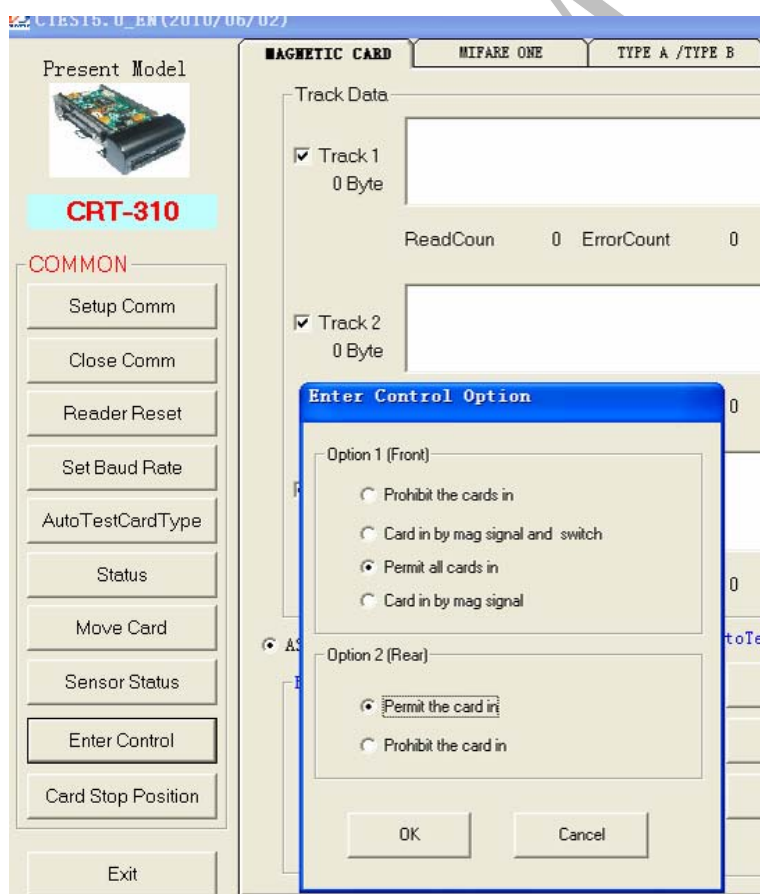



	SPECIFICATION	Model No.	CRT-310
		Date	2010/7/9
	Motorized Card Reader	Ver.	1.0
		Page	13/19

- ④ Initialization: Initialization is must (See the following pictures)

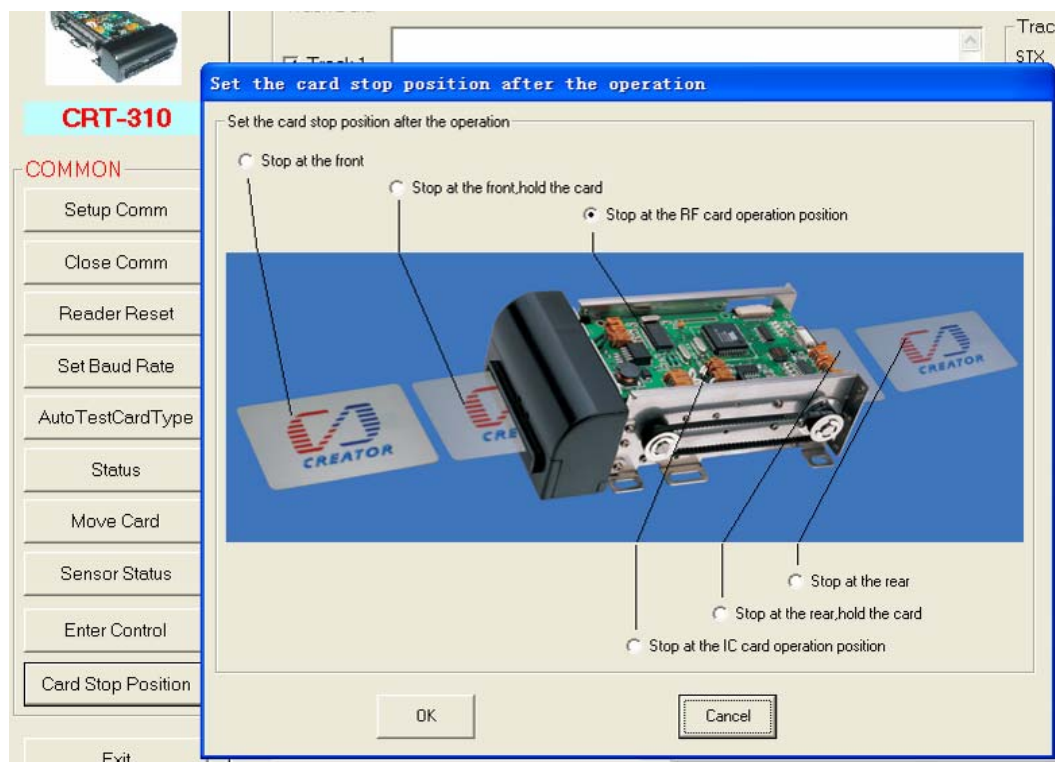


- ⑤ Entry control setting (See the following pictures)



	SPECIFICATION	Model No.	CRT-310
		Date	2010/7/9
	Motorized Card Reader	Ver.	1.0
		Page	14/19

⑥ Set stop position of card (See the following picture)




⑦ Functions (See the following picture)


Status: Inquiry card entry setting parameters and inner status of reader

Sensor status: Inquiry sensor status

Move Card: Setup the position of card

Under bar of reading magnetic card, two method of testing is provided, single testing and continuous testing.

	SPECIFICATION	Model No.	CRT-310
		Date	2010/7/9
	Motorized Card Reader	Ver.	1.0
		Page	15/19

Present Model  
  
**CRT-310**  
COMMON  
Setup Comm  
Close Comm  
Reader Reset  
Set Baud Rate  
AutoTestCardType  
Status  
Move Card  
Sensor Status  
Enter Control  
Card Stop Position  
Exit

MAGNETIC CARD    MIFARE ONE    TYPE A /TYPE B    IC CARD    Extend Function    MONITOR

Track Data  
☒ Track 1  
0 Byte  
ReadCoun    0    ErrorCount    0    ErrorRate    0    %  
☒ Track 2  
0 Byte  
ReadCoun    0    ErrorCount    0    ErrorRate    0    %  
☒ Track 3  
0 Byte  
ReadCoun    0    ErrorCount    0    ErrorRate    0    %

Track1Group  
STX    0  
ETX    0  
Parity    0  
LRC    0  
BLANK    0  
Track2Group  
STX    0  
ETX    0  
Parity    0  
LRC    0  
BLANK    0  
Track3Group  
STX    0  
ETX    0  
Parity    0  
LRC    0  
BLANK    0

☒ ASCII    ☐ BIN    Clear    Save Data  
Read Tracks Data  
Read Mag-card    Clear Buffer Data

AutoTestMagneticCard  
Test    Read Times    0  
Stop    Error Times    0  
OPEN Mag-Card LOG    Error Rate    0 %  
Times Setting    50

## 11. Maintenance


The reader should be maintained after the appropriate interval of use:

- 1) When the transportation roller is dirt, please use cleaning card with alcohol
- 2) Dip the cleaning card into alcohol and execute card transportation command to clean the internal area.
- 3) Periodic maintenance:

For sensor, magnetic head and IC contact, suggest a maintenance every 2,000 times

- ① Sensor maintenance: Connect reader first and operate DEMO to query & check sensor status. In the initial status (No card inside), the all status of sensor are "OFF", and if there is a sensor status show as "ON", the maintenance of this sensor group is needed.
- ② IC contact maintenance: If any dirt is founded on the IC contact, please use cleaning card with alcohol to clean. Use method: After insert cleaning card, please execute auto test card type function to clean the IC contact.
- ③ Roller maintenance: Use card transportation command and cleaning card.
- ④ Magnetic head maintenance: Use card transportation command and cleaning card



	SPECIFICATION	Model No.	CRT-310
		Date	2010/7/9
	Motorized Card Reader	Ver.	1.0
		Page	16/19

## 12. Cautions for Use

- 1) Prohibit to plug out serial port in electrified condition.
- 3) Grease contamination is prohibited
- 4) Suggest DC12V/3A power supply. Prohibit to access to power surpass 15V
- 5) Plug out power first than serial port
- 6) Insertion direction for IC card: See the following picture




- 7) Insertion direction for Magnetic card: Magnetic strip is on the right side of reader; please refer to the following picture

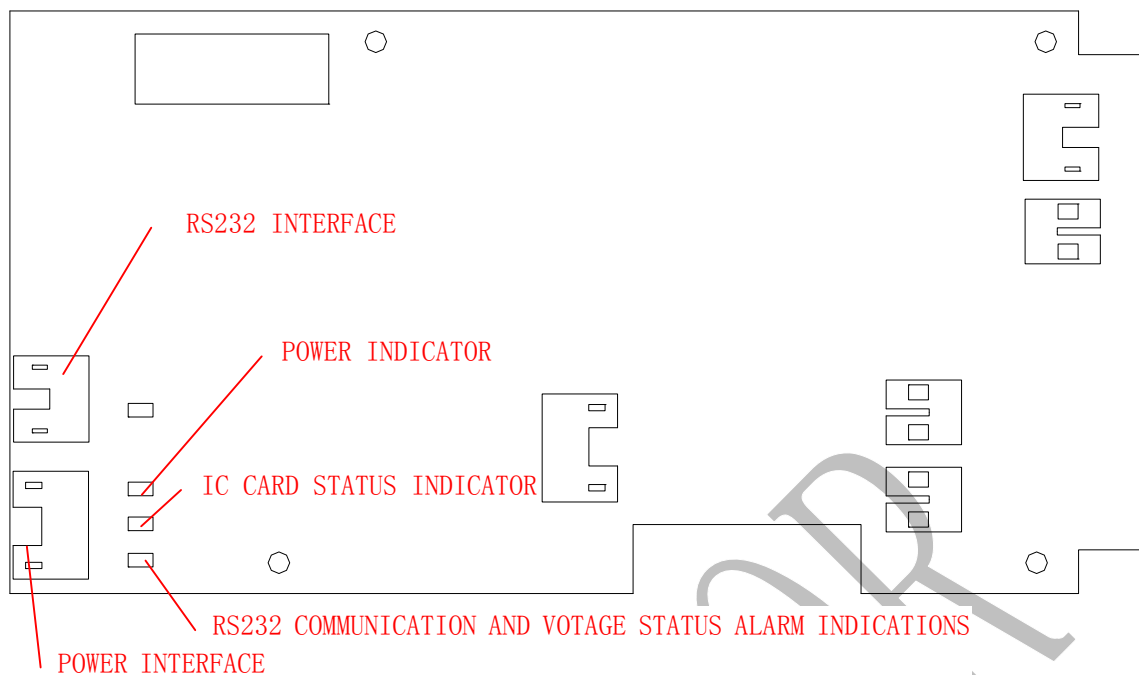


### 9) LED Indicator Specification

- ① After power on, POWER INDICATOR light on
- ② Under normal condition, RS232 COMMUNICATION AND VOTAGE STATUS ALARM INDICATIONS will blinking. When power is lower than 10.8 or upper than 14.5V, this LED will keep lighting and the reader will enter protection mode (The command is available)
- ③ when operate IC card, IC CARD STATUS INDICATOR will light on, if any error, the light will light off




	SPECIFICATION	Model No.	CRT-310
		Date	2010/7/9
	Motorized Card Reader	Ver.	1.0
		Page	17/19

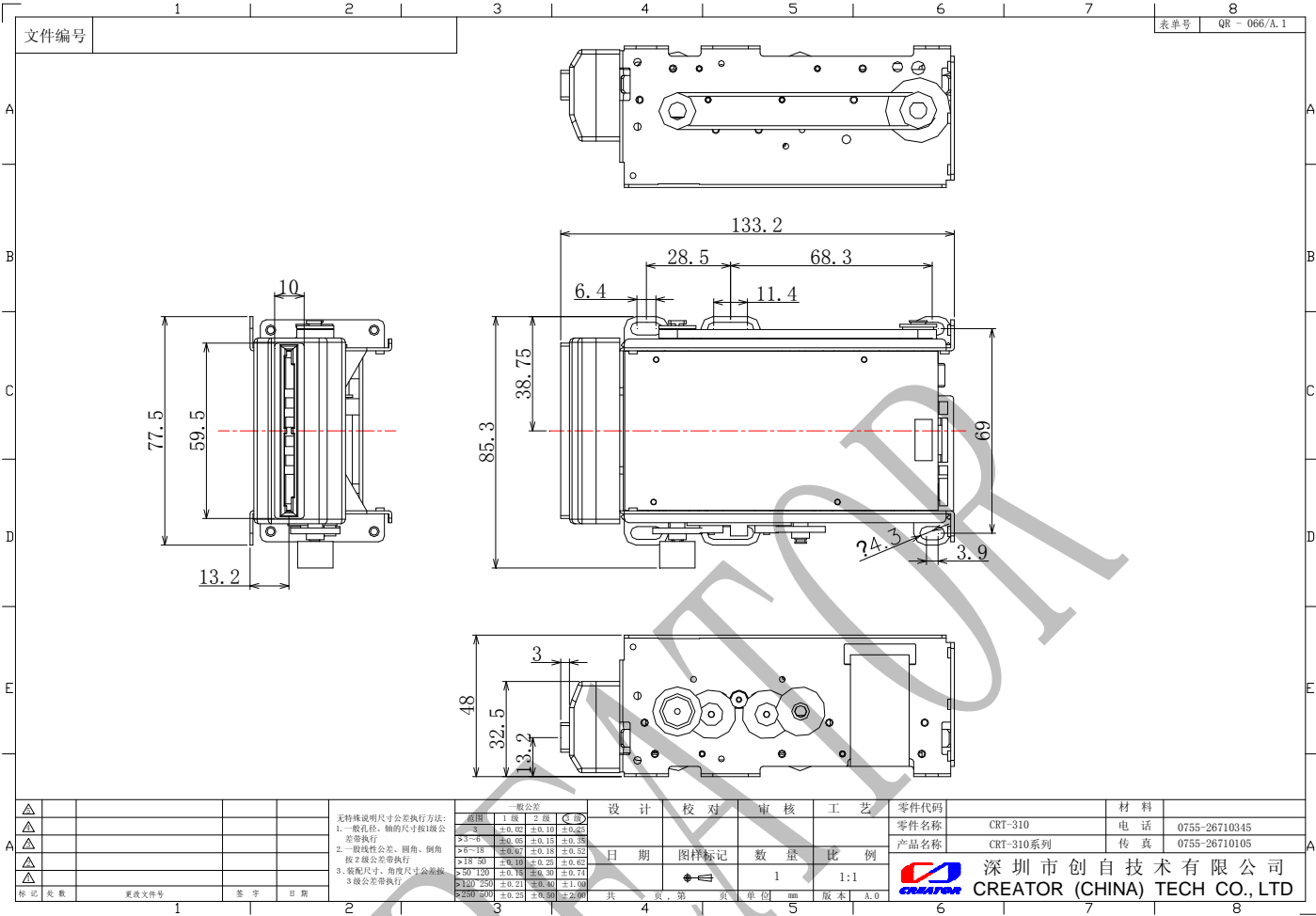


### 13. Relevant Documents

- 1) DLL: CRT-310-V30 DLL Specification
- 2) DLL relevant: DLL sample source code
- 3) Communication Protocol: CRT-310-V40 Communication protocol

	SPECIFICATION	Model No.	CRT-310
		Date	2010/7/9
	Motorized Card Reader	Ver.	1.0
		Page	18/19

14. Structure Dimensions



CRT-380B



# SPECIFICATION

Motorized Card Reader

Model No.

CRT-310

Date

2010/7/9

Ver.

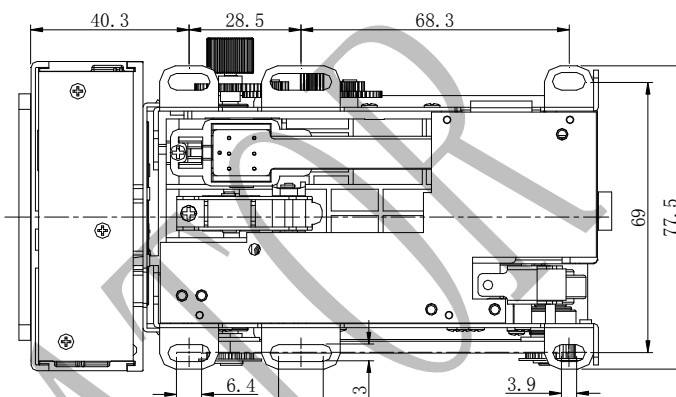
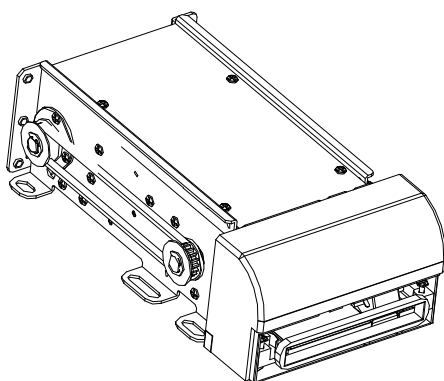
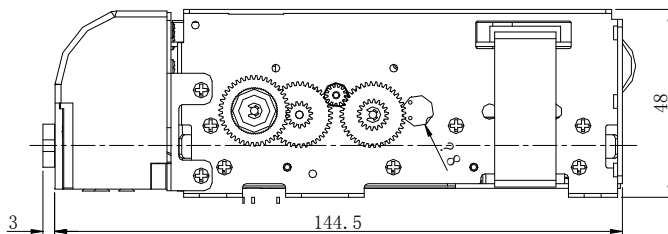
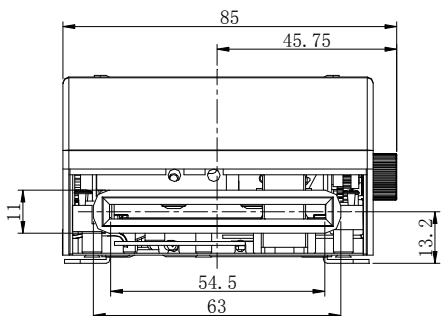
1.0


Page

19/19

文件编号

表序号 QR-066/A.2



				无特殊说明尺寸公差执行公差:		一般公差		设计	校对	审核	工艺	零件代码	CRT-310-(XD1)M-1CN	材料		
				1.一般线性、轴的尺寸按1级公差执行		范围	1级	2级	张清	胡勇	龙波	零件名称	310电动读卡器	电话	0755-26710345	
				2.一般线性公差: 圆角、倒角		<3	±0.05	±0.10	日期	图样标记	数量	比例	产品名称	CRT-310 系列	传真	0755-26710105
				按2级公差带执行		3~6	±0.05	±0.10	2010.06.24	1	1:1	 深圳市创自技术有限公司 CREATOR (CHINA) TECH CO., LTD				
				3.角尺寸公差按3级公差带执行		>6~18	±0.07	±0.15	共	页, 第	单位					
						18~50	±0.10	±0.20								
						50~120	±0.15	±0.30								
						120~250	±0.20	±0.40								
						250~500	±0.25	±0.50								

CRT-380C