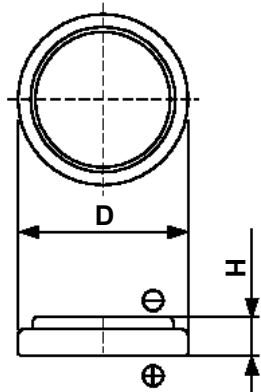


## Cell Type CR2032v Specifications

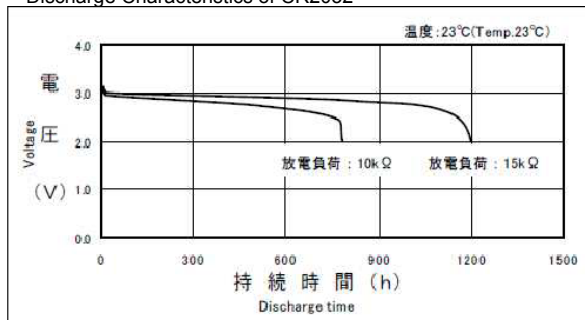


Nominal Voltage (V)	3
Nominal Capacity (mAh) <sup>*1</sup>	220
Standard Discharge Current (mA)	0.2
Operating Temperature Range (°C)	-20 ~ +70
Max. Dimensions (mm)	Diameter (D) 20.0
	Height (H) 3.2
Weight (g)	3.2

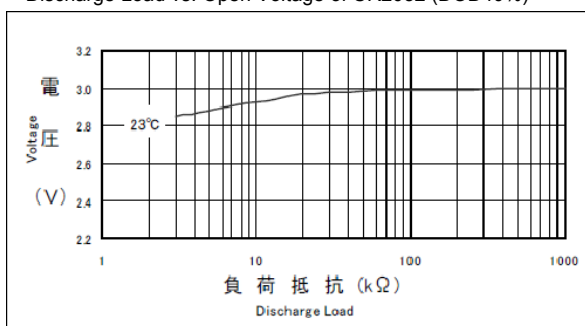
\*1 Nominal capacity is determined at an end voltage of 2.0V when the battery is allowed to discharge at a standard current level at +23°C.

### Typical Characteristics

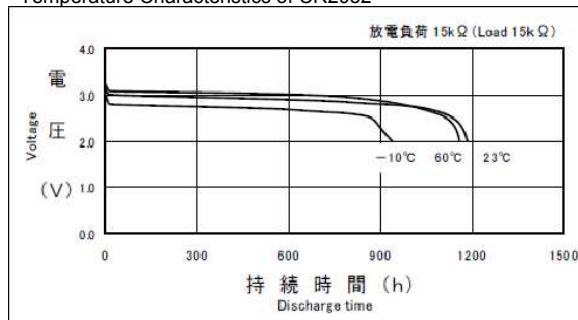
Discharge Characteristics of CR2032



Discharge Load vs. Open Voltage of CR2032 (DOD40%)



Temperature Characteristics of CR2032



Discharge Load vs. Cell Capacity of CR2032

