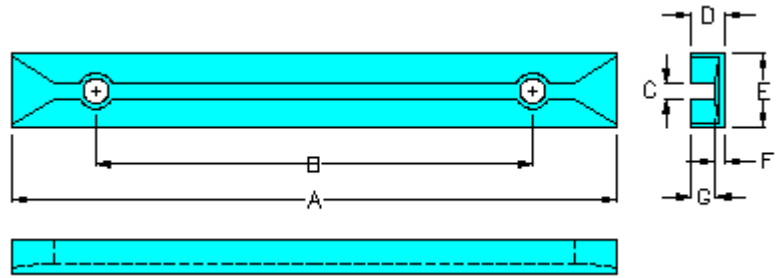


## PCB GUIDE RAIL

**MATERIAL: NYLON 66(UL)**  
**FLAME CLASS: 94V-2**  
**COLOR: NATURAL**

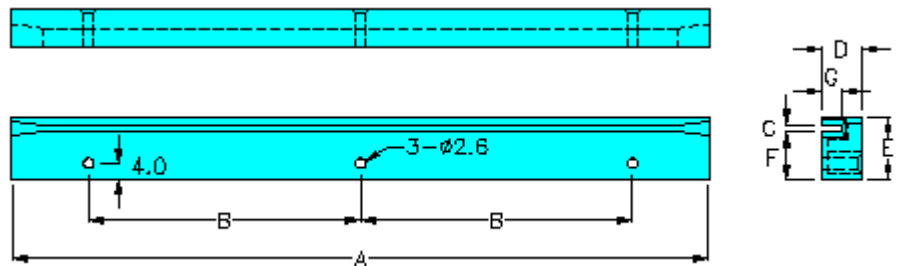


\* MOUNT SCREW: 3mmx6mm FLAT SCREW

PART NO	A	B	C	D	E	F	G	PACKAGE
CG-9	89.0	64.5	1.9	4.5	9.8	1.5	3.0	100
CG-9AS	100.0	77.4	2.2	7.2	10.0	1.7	5.5	100
CG-9L	91.0	67.0	1.9	8.8	9.2	1.6	7.2	100
CG-12	119.0	94.5	1.9	4.5	9.8	1.5	3.0	100
CG-14	139.8	114.5	1.9	4.3	9.7	1.5	2.8	100
CG-16	158.7	135.0	1.9	4.3	9.7	1.5	2.8	100
CG-18	180.0	150.0	3.5	9.0	12.0	3.0	6.0	100

## PCB GUIDE RAIL

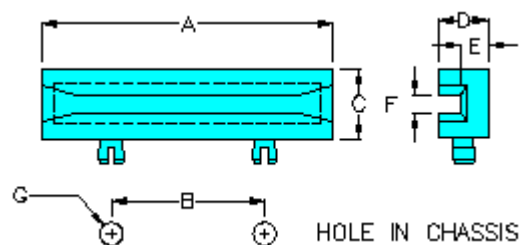
**MATERIAL: NYLON 66(UL)**  
**FLAME CLASS: 94V-2**  
**COLOR: NATURAL**



PART NO	A	B	C	D	E	F	G	PACKAGE
CF-180	180.5	70.0	2.0	10.0	16.0	12.0	5.0	50

## PCB GUIDE RAIL

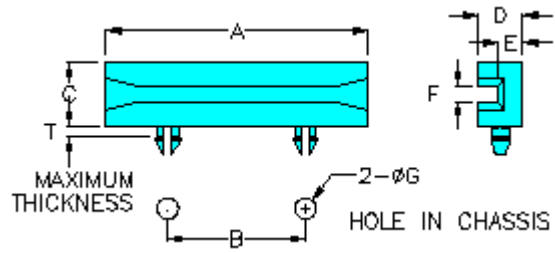
**MATERIAL: NYLON 66(UL)**  
**FLAME CLASS: 94V-2**  
**COLOR: NATURAL**



PART NO	A	B	C	D	E	F	G	PACKAGE
CG-4A	38.3	20.2	9.3	6.5	3.5	2.3	3.0	200

# PCB GUIDE RAIL

**MATERIAL: NYLON 66(UL)**  
**FLAME CLASS: 94V-2**  
**COLOR: NATURAL**



PART NO	A	B	C	D	E	F	G	T	PACKAGE
CG-04E	38.3	20.0	9.3	6.5	3.5	1.8	?5	1.6	500
CG-04C	38.3	20.0	9.3	6.5	3.5	2.3	?2	1.6	500
CG-08C	80.5	60.0	9.4	6.4	3.4	2.3	?2	1.6	100
CG-08D	80.5	60.0	8.0	6.0	3.0	2.0	?2	1.6	100
CG-08H	80.5	60.0	8.0	6.0	3.0	2.0	?2	2.6	100