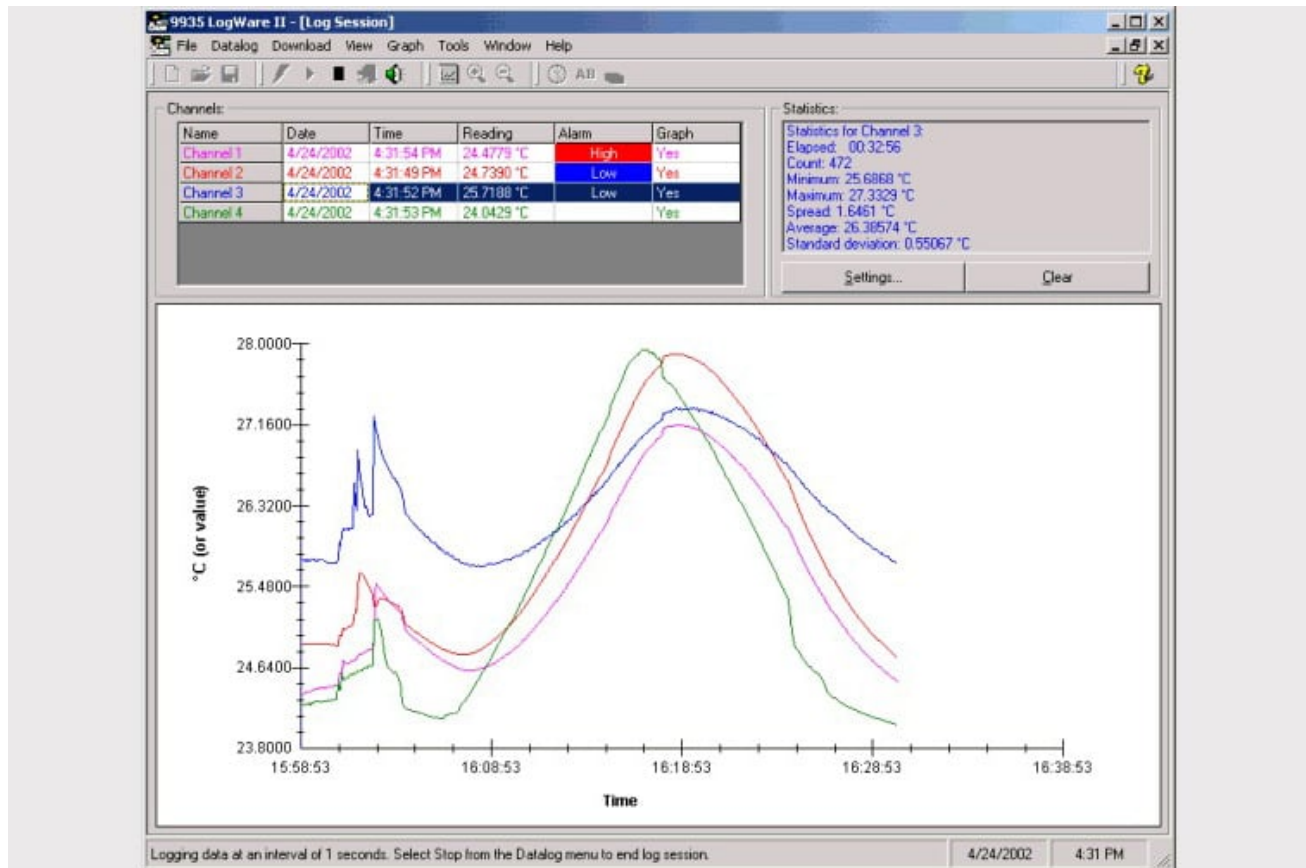


## TECHNICAL DATA

# 9935 LogWare II – Temperature Calibration Software



## Key features

- Converts Fluke Calibration multi-channel thermometer into a real-time data logger.
- Real-time data collection, statistics, customizable graphs.
- Select start/stop times and sample intervals.
- User-defined, customizable alarm events.
- Downloads data from thermometer logs and memory via serial or IR port.
- Reads/writes probe coefficients and thermometer settings.

## Product overview: 9935 LogWare II – Temperature Calibration Software

LogWare II lets you acquire data to your PC graphically and store it to text files. It also performs statistical functions automatically on each data set.

LogWare II was designed specifically for temperature data acquisition, although it can also collect resistance, voltage, ratio or other data as well. Set high and low alarm conditions, program a delayed start time, store a data log for a fixed number of readings or length of time, program the acquisition interval from 1 second to 60 hours, and let the software record the data you need the way you need it.

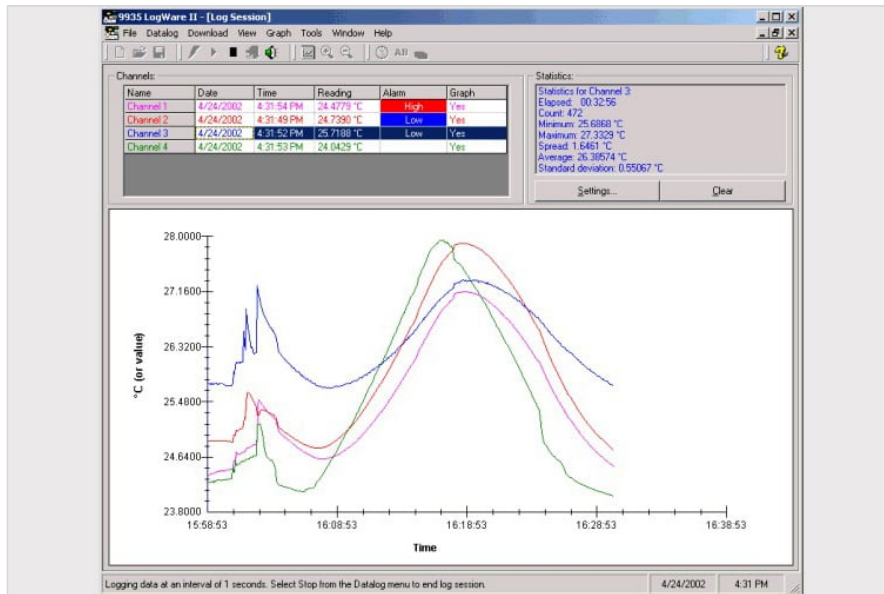
During a log session you can view the data for any or all data sets in a time/value trend graph while the data points are stored to files on your PC. Output the graph to your printer, view the test points from a spreadsheet, or review the pertinent log statistics once your log is completed. With *LogWare II* you can collect and view data from up to 96 probes simultaneously.

Store readings from your freezers, ovens, chambers, and anywhere else you need to record temperature, bring it back to your PC (through a standard serial cable or infrared dongle), and *LogWare II* will separate each log session into individual data sets. You don't have to load the text files into your spreadsheet and try to figure out which data points went with which log session. *LogWare II* does all that for you.

*LogWare II* also gives you the ability to make configuration changes to your readout. Program your probe coefficients, write calibration data to your meter, set password-protected parameters, and access other tools specific to your readout all from your PC.

Get the most out of your readout with *LogWare II*.

## Ordering information



### 9935-S

LogWare II, Multi Channel, Single User

### 9935-M

LogWare II, Multi Channel, Multi User



**Fluke.** *Keeping your world up and running.®*

**Fluke Corporation**  
PO Box 9090, Everett, WA 98206 U.S.A.

**For more information call:**  
In the U.S.A. (800) 443-5853  
In Canada (800) 36-FLUKE  
From other countries +1 (425) 446-5500  
[www.fluke.com](http://www.fluke.com)

©2025 Fluke Corporation.  
Specifications subject to change without notice.  
02/2025

**Modification of this document is not permitted  
without written permission from Fluke  
Corporation.**