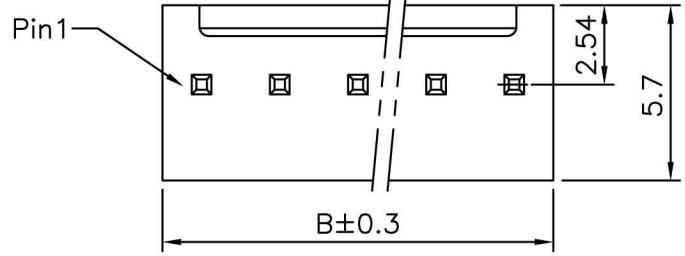


RoHS COMPLIANT

REV	ECN NO.	DESCRIPTION	DATE
A		RELEASE	JAN. 10'02
B		ADD. RoHS	JAN. 29'06
C		MODIFY POLES	JAN. 18'07
D		MODIFY P/N	JAN. 07'11

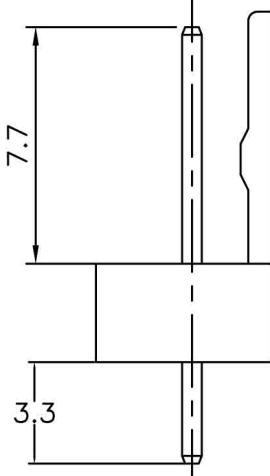
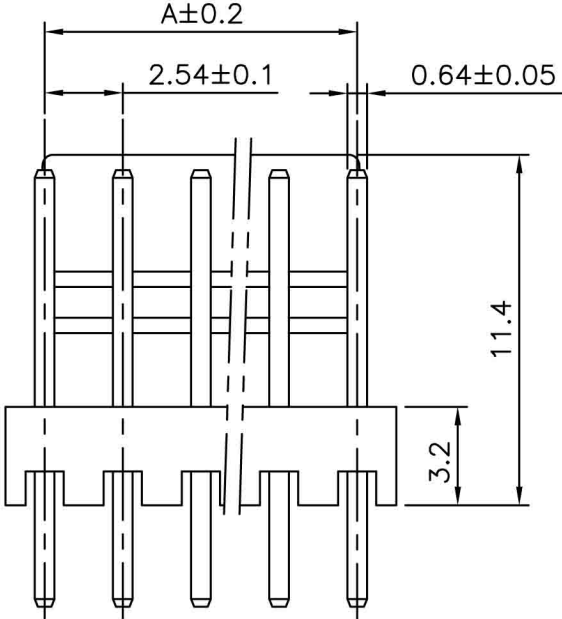


■ SPECIFICATIONS

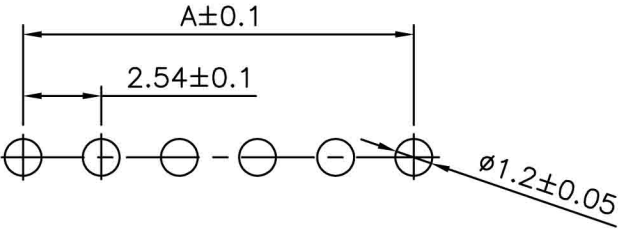
- Voltage Rating : 250V AC/DC
- Current Rating : 3A AC/DC
- Withstanding Voltage : 1000V AC/minute
- Insulation Resistance : 1000MΩ min
- Temperature Range : - 25°C to + 85°C
- Contact Resistance : 20mΩ max

■ WAFER

- PolesN : 2-15
- Material : Contact : Brass, Tin Plated
Base : Nylon 66 UL94V-2
- Q' ty : 1000 pcs./Bag



Poles	Dimensions(mm)	
	A	B
2	2.54	5.08
3	5.08	7.62
4	7.62	10.16
5	10.16	12.70
6	12.70	15.24
7	15.24	17.78
8	17.78	20.32
9	20.32	22.86
10	22.86	25.40
11	25.40	27.94
12	27.94	30.48
13	30.48	33.02
14	33.02	35.56
15	35.56	38.10



Recommand PCB Layout

Note:*V=No. of Position Omitted.
(第 n 位置不插 PIN)

TOLERANCE UNLESS OTHERWISE SPECIFIED		PROJECTION	GOLD-TEK ELECTRIC CO., LTD.	
LINEAR	ANGLE	UNITS	TITLE	
X. ±	X° ±		2.54MM WAFER DIP STRAIGHT TYPE	
.X ± 0.30	.X° ±	MM	PART NO.	
.XX ± 0.20	.XX° ±	SCALE	6001**ST(-*V)	
.XXX±	.XXX° ±	SIZE	CAD NO. 1056	
APPD		A4	SHEET	
CHKD			F:\PDF\HW-A\HW-A0004	
DRAW	Z	JAN. 07'2011	1 OF 1	
			CPART NO.	
			<div style="border: 2px solid blue; padding: 5px; display: inline-block;">圖面編號:GTKSD0875-D(1)</div>	