



Part Number : 559171610

Series Number : 55917

Product Category : PCB Headers and Receptacles

Product Description : 2.00mm Pitch MicroClasp Wire-to-Board Header, Dual Row, Vertical, 16 Circuits, with PCB Locator

Status : Active

Documents & Resources


Drawings
Drawing 559171610_sd.pdf

3D Models and Design Files
3D Model 559171610_stp.zip

Specifications
Application Specification 561340000-AS-000.pdf
Packaging Specification 559179200-SPK-200.pdf
Product Specification PS-51353-003-001.pdf
Product Specification PS-51353-010-001.pdf

Product Environment Compliance

Compliance

GADSL/IMDS	Not Relevant
China RoHS	
EU ELV	Not Relevant
Low-Halogen Status	Not Low-Halogen per IEC 61249-2-21
REACH SVHC	Not Contained per D(2024)4144-DC (27 June 2024)
EU RoHS	Compliant per EU 2015/863

Multiple Part Product Compliance Statements

- Eu RoHS
- REACH SVHC
- Low-Halogen

Multiple Part Industry Compliance Documents

- IPC 1752A Class C

- IPC 1752A Class D
- Molex Product Compliance Declaration
- IEC-62474
- chemSHERPA (xml)

EU RoHS Certificate of Compliance

Part Details

General

Status	Active
Category	PCB Headers and Receptacles
Series	55917
Description	2.00mm Pitch MicroClasp Wire-to-Board Header, Dual Row, Vertical, 16 Circuits, with PCB Locator
Application	Signal, Wire-to-Board
Component Type	PCB Header
Product Family	MicroClasp Wire-to-Board System
Product Name	MicroClasp
UPC	800756610962

Agency

UL	E29179
----	--------

Electrical

Current - Maximum per Contact	3.0A
Voltage - Maximum	250V AC (RMS)/DC

Physical

Breakaway	No
Circuits (Loaded)	16
Circuits (maximum)	16
Color - Resin	Natural
Durability (mating cycles max)	30
First Mate / Last Break	No
Flammability	94V-0
Glow-Wire Capable	No

Guide to Mating Part	No
Keying to Mating Part	None
Lock to Mating Part	Yes
Material - Plating Mating	Tin
Material - Plating Termination	Tin
Material - Resin	Polyester
Net Weight	1278.500/mg
Number of Rows	2
Orientation	Vertical
Packaging Type	Tray
PC Tail Length	3.20mm
PCB Locator	Yes
PCB Retention	Yes
PCB Thickness - Recommended	1.60mm
Pitch - Mating Interface	2.00mm
Shrouded	Fully
Stackable	No
Temperature Range - Operating	-40° to +105°C
Termination Interface Style	Through Hole

Mates With / Use With



Mates with Part(s)

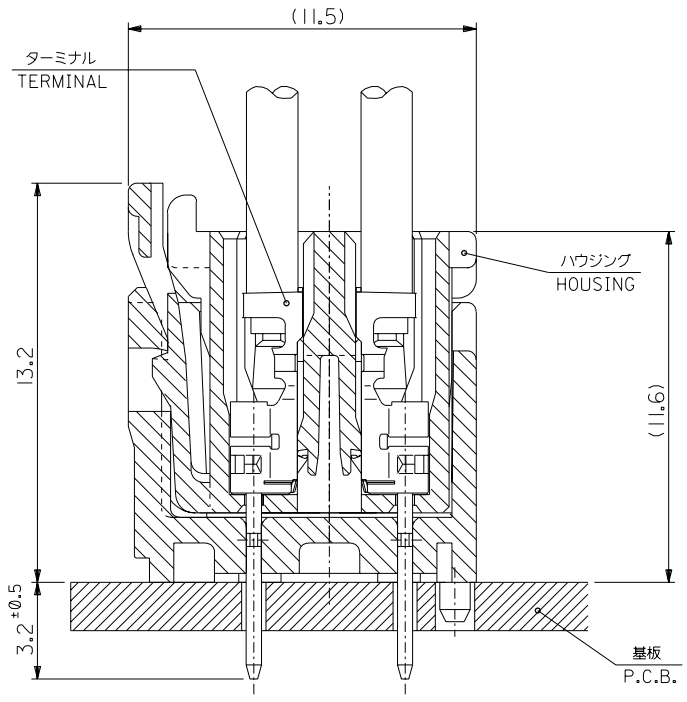
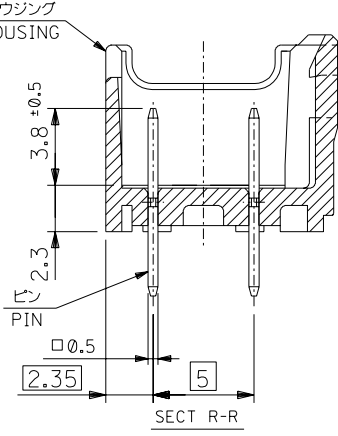
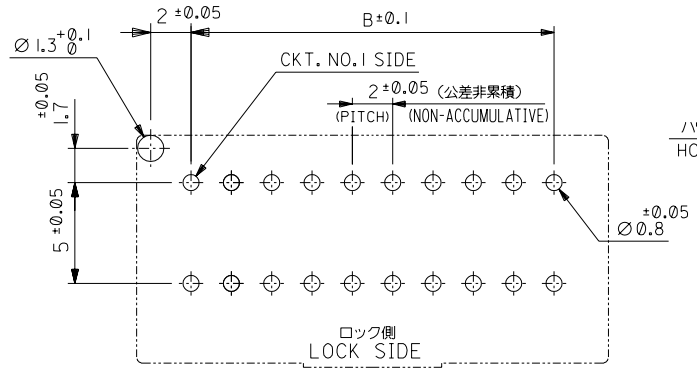
Description	Part Number
MicroClasp Dual Row Receptacle Housings	<u>51353</u>

D	REVISED	1284NO. J2003-3290 DRWN:N.ITO '03/06/26 CHK: K.ASAKAWA APPR: T.YAMAGUCHI
	REVISED	1283NO. J2003-3134 DRWN:N.ITO '03/06/19 CHK: K.ASAKAWA APPR: T.YAMAGUCHI
C	REVISED	1282NO. J2002-2307 DRWN:N.ITO '02/03/18 CHK: K.ASAKAWA APPR: T.YAMAGUCHI
B	REVISED	1281NO. J2002-1826 DRWN:N.ITO '02/02/28 CHK: K.ASAKAWA APPR: T.YAMAGUCHI
A	RELEASED	1280NO. J2002-1196 DRWN:N.ITO '01/12/17 CHK: K.ASAKAWA APPR: T.YAMAGUCHI
0	REVISED	1279NO. J2002-1196 DRWN:N.ITO '01/12/17 CHK: K.ASAKAWA APPR: T.YAMAGUCHI

REV	MATERIAL 材料	注記参照 SEE NOTES
	FINISH 仕上げ	//
REV	WIRE RANGE 適用電線範囲	//
	INS. RANGE 被覆外径	//

GENERAL TOLERANCES: (UNLESS SPECIFIED) 一般公差	
10 UNDER 未満	±0.2
10 OVER 30 UNDER 以上 未満	±0.25
30 OVER 以上	±0.3
ANGLE 角度	±3°

55917-***1*		MODEL NO.		DIMENSIONS:		SHT	REV
SCALE 4:1	DESIGN UNITS <input checked="" type="checkbox"/> mm <input type="checkbox"/> INCH		 FIRST ANGLE PROJECTION	<input type="checkbox"/> mm INCH	<input type="checkbox"/> mm INCH	<input checked="" type="checkbox"/> mm ONLY	22 01 21 ON CAD ONLY
DRAWN BY & DATE N.ITO '01/12/17		TITLE: 2.0mm W+-B DUAL CONN DIP PLUG HOUSING ASS'Y ST (WITH BOSS)					
CHECKED BY & DATE K.ASAKAWA '03/06/26		MOLEX INCORPORATED					
APPROVED BY & DATE T.YAMAGUCHI '03/06/26		MOLEX INCORPORATED					
CAD FILENAME 55917003.S02		MATERIAL NO. SEE CHART		DRAWING NO. SD-55917-003		SHEET NO. 2 OF 2	
THIS DRAWING CONTAINS INFORMATION THAT IS PROPRIETARY TO MOLEX INCORPORATED AND SHOULD NOT BE USED WITHOUT WRITTEN PERMISSION.							SIZE B



無鉛
LEAD FREE