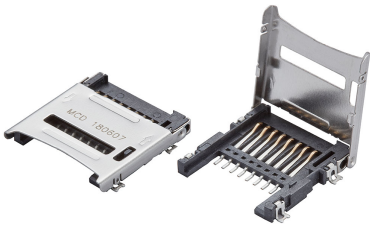




Part Number : [472192001](#)
Product Description : 1.10mm Pitch microSD Card Connector, Hinge Type, Lead-Free
Series Number : 47219
Status : Active
Product Category : Memory / SIM Card Connectors



Documents & Resources


Drawings
[472192001_sd.pdf](#)
[PK-47219-001-002.pdf](#)

3D Models and Design Files
[472192001_stp.zip](#)

Specifications
[PS-47219-001-001.pdf](#)

Product Environment Compliance

Compliance

GADSL/IMDS	Compliant with Exemption 34; 33
China RoHS	
EU ELV	Not Relevant
Low-Halogen Status	Low-Halogen per IEC 61249-2-21
REACH SVHC	Not Contained per D(2024)7663-DC (21 Jan 2025)
EU RoHS	Compliant per EU 2015/863

Multiple Part Product Compliance Statements

- Eu RoHS
- REACH SVHC
- Low-Halogen

Multiple Part Industry Compliance Documents

- IPC 1752A Class C
- IPC 1752A Class D

- Molex Product Compliance Declaration
- IEC-62474
- chemSHERPA (xml)

EU RoHS Certificate of Compliance

Part Details

General

Status	Active
Category	Memory / SIM Card Connectors
Series	47219
Description	1.10mm Pitch microSD Card Connector, Hinge Type, Lead-Free
Comments	Hinge Type
Product Name	microSD Card
Style	Hinge
UPC	884982238763

Electrical

Current - Maximum per Contact	0.5A
Shielded	Yes
Voltage - Maximum	100V DC

Physical

Card Detection Switch	No
Card Entry Location	Front
Circuits (Loaded)	8
Circuits (maximum)	8
Color - Resin	Black
Durability (mating cycles max)	5000
Ejector Button Side	N/A
Material - Contact	Copper Alloy
Material - Plating Mating	Gold
Material - Plating Termination	Tin
Material - Resin	High Temperature Thermoplastic
Material - Shell	Stainless Steel

Net Weight	0.434/g
Packaging Type	Embossed Tape on Reel
PCB Locator	No
PCB Retention	Yes
Pitch - Mating Interface	1.10mm
Pitch - Termination Interface	1.10mm
Temperature Range - Operating	-20° to +85°C
Termination Interface Style	Surface Mount

Solder Process Data

Max-Duration	3
Lead-Free Process Capability	REFLOW
Max-Cycle	2
Max-Temp	250

Use with Part(s)

Description	Part Number
Use With	microSD Card
