

TECHNICAL DATA

Fluke 417D Laser Distance Measurer



FEATURES AND BENEFITS

All meters offer:

- Measures up to 40 m (131 ft.) with accuracy of 2mm (0.08 in)
- Instant distance measurement with one-button operation
- Great for interior and exterior applications
- Improved visibility with backlit screen
- Easy targeting with bright laser
- Quick calculation of area (square footage)
- Continuous measurement capable
- Improved battery life from automatic shut-off feature
- Battery life of 3,000 measurements

The Fluke 417D is accurate, durable, and easy to use—just point and shoot.

The simple design and easy one-button operation means you can minimize your time measuring while maximizing the reliability of the measurements you need.

The Fluke 417D laser distance meter is designed for indoor and outdoor applications. The 417D operates with the Fluke durability and quality you expect. And, with simple function buttons, three different measurement tasks can be completed quickly and easily.

The extra bright laser is clearly visible, so you can always see your targeting point even if the target object is in a hard-to-reach spot, or at a long distance. The 417D has a large 2-line illuminated LCD screen and three-buttons for easy-to-use one-handed measurements.

The 417D additionally offers:

- 131 ft. working range
- One-touch controls
- 2-line illuminated display
- Ultra-portable
- 1-meter drop tested
- IP54 dust and water resistant
- 3-year warranty



General specifications

417D	
Typical range [1]	0.2–40 m/0.6–131 ft
Typical measuring tolerance* [1]	2.0 mm ± 1.5 mm/± 0.06 in ***
Maximum measuring tolerance [2]	± 3.0 mm/0.12 in ***
Accuracy up to 10m (+/-)	± 2 mm
Display	2 line/1 mm/1/32 in
Display illumination	Yes
Laser point at distance	6/30/60 mm (10/40/100 m)
Area	Yes
Units setting (smallest units displayed)	0,000m, 0' 00" 1/32, 0 in 1/32
Auto laser switch off	90 sec
Auto power switch off	180 sec
General	
Laser class	II
Laser type	635 nm, <1 mW
Protection class	IP54
Battery life (2 x AAA) 1.5 V NEDA 24A/IEC LR03	Up to 3,000 measurements
Size (H x W x D)	11.9 x 3.8 x 2.6 cm
Drop test	1 meter
Weight (with batteries)	95g (3.35 oz)
Temperature range: Storage	-25 °C to 70 °C (-13 °F to 158 °F)
Temperature range: Operation	-10 °C to 50 °C (14 °F to 122 °F)
Calibration cycle	Not applicable
Maximum relative humidity	85 % @ 20°F to 120 °F (-7 °C to 50 °C)
Safety	CAN/CSA-C22.2 No. 61010-1-04, UL Std. No. 61010-1 (2nd Edition), ISA-82.02.01, IEC Standard No. 61010-1:2001, EN60825-1:2007 (Class II)
EMC	61326-1:2006

- [1] Applies for 100 % target reflectivity (white painted wall), low background illumination, 25 °C (13 °F).
- [2] Applies for 10 % to 500 % target reflectivity, high background illumination, -10 °C to +50 °C (14 °F to +122 °F).
- [3] Tolerances apply from 0.05 m to 10 m (0.001 ft to 32.8 ft) with a confidence level of 95 %. The maximum tolerance may deteriorate to 0.1 mm/m (0.003 in/ft) between 10 m to 30 m (32.8 ft to 98.4 ft) and to 0.15 mm/m (0.005 in/ft) for distances above 30 m (98.4 ft).
- [4] Applies for 100 % target reflectivity, background illumination between 10,000 lux and 30,000 lux.
- [5] After user calibration. Additional angle related deviation of ± 0.01° per degree up to ± 45° in each quadrant. Applies at room temperature. For the whole operating temperature range the maximum deviation increases by ± 0.1°.



Fluke 417 D Laser Distance Meter

Ordering information

Fluke 417D Laser Distance Meter

Laser distance meter, two AAA batteries, user's manual, quick reference guide, lanyard, and three-year warranty.

Fluke 417D/62 Max+ Laser Distance Meter/Infrared Thermometer combo kit



Why use a distance meter?

Instant measurements up to 40 meters/131 feet. Just point, click, done.

Measure with greater accuracy. Up to ± 2 mm. Accuracy at the level you require.

Do the work of two. Instead of holding the tape, your helper can do other jobs.

Speed up the job. Easily measure hard-to-access areas, like high ceilings, without climbing a ladder.

Reduce estimating errors—let the meters do the math. Find area measurements easily.

Trust Fluke tools. Rugged and reliable, dust and splash-proof, you can work indoors and out with confidence, because they're Fluke tools.

For more information visit www.fluke.com/distance

Fluke. *Keeping your world up and running.®*

Fluke Corporation

PO Box 9090, Everett, WA 98206 U.S.A.

Fluke Europe B.V.

PO Box 1186, 5602 BD
Eindhoven, The Netherlands

For more information call:

In the U.S.A. (800) 443-5853 or
Fax (425) 446-5116
In Europe/M-East/Africa +31 (0) 40 2675 200 or
Fax +31 (0) 40 2675 222
In Canada (800)-36-FLUKE or
Fax (905) 890-6866
From other countries +1 (425) 446-5500 or
Fax +1 (425) 446-5116
Web access: <http://www.fluke.com>

©2019 Fluke Corporation.

Specifications subject to change without notice.
Printed in U.S.A. 7/2019 6012529a-en

**Modification of this document is not permitted
without written permission from Fluke Corporation.**

TECHNICAL DATA

64 MAX, 62 MAX+ and 62 MAX IR Thermometers



TEMPERATURE RANGE

64 MAX

-30 °C to 600 °C (-22 °F to 1112 °F)

62 MAX+

-30 °C to 650 °C (-22 °F to 1202 °F)

62 MAX

-30 °C to 500 °C (-22 °F to 932 °F)

TEMPERATURE ACCURACY

64 MAX

± 1.0 °C or ± 1.0 % of reading,
whichever is greater

± 2.0 °C at -10 °C to 0 °C

± 3.0 °C at -30 °C to -10 °C

62 MAX+

± 1.0 °C or ± 1.0 % of reading,
whichever is greater

± 2.0 °C at -10 °C to 0 °C

± 3.0 °C at -30 °C to -10 °C

62 MAX

± 1.5 °C or ± 1.5 % of reading,
whichever is greater

± 2.0 °C at -10 °C to 0 °C

± 3.0 °C at -30 °C to -10 °C

DISTANCE:SPOT

64 MAX

20:1

62 MAX+

12:1

62 MAX

10:1

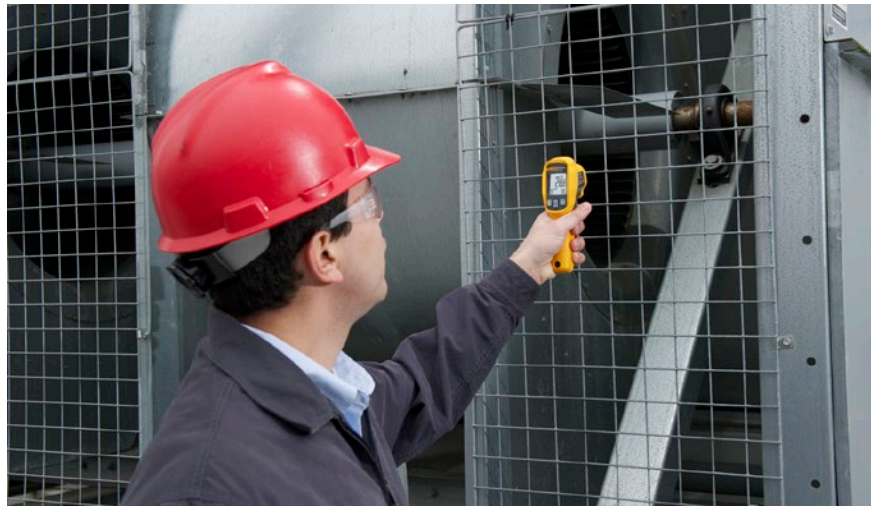
INTERNAL MEMORY

64 MAX

99 data point logging

AUTO CAPTURE

64 MAX



Takes the heat, the dust and water and a 3 meter drop. And now, internal memory and unattended monitoring.

The Fluke 64 MAX, 62 MAX+ and 62 MAX IR Thermometers have the precision you need to do your job accurately and will not break the budget. Designed and tested to survive a 3 meter drop, you can count on these lightweight, compact infrared thermometers to work when you need them to work—even in the harshest environments and when you're not able to be there (64 MAX).

- Precise laser technology for more accurate and repeatable measurements
- Temperature accuracy of up to ≥ 0 °C: ± 1 °C or ± 1 % of reading whichever is greater with 20:1 distance to spot ratio (64 MAX)
- Flashlight (64 MAX) and large, easy-to-read backlit LCD display for easy viewing even in dark environment
- IP54 rated for extra protection against airborne contaminants
- Get your tool to work when you can't—set time and desired interval between measurements and Auto Capture will capture spot temperatures unattended (64 MAX)
- 99 data point logging (64 MAX)
- Displays the minimum, maximum or average temperature, or the difference between two measurements
- Hi and Lo alarms for rapid display of measurements outside set limits
- The 62 MAX+ has dual rotating lasers to help you identify area to be measured. The measurement area is the spot between the dots (62 MAX and 64 MAX have 1).
- Small and lightweight, fits easily into your tool box

Specifications

	64 MAX	62 MAX+	62 MAX
Key features			
Temperature range	- 30 °C to 600 °C (-22 °F to 1112 °F)	- 30 °C to 650 °C (-22 °F to 1202 °F)	- 30 °C to 500 °C (-22 °F to 932 °F)
Accuracy (Calibration geometry with ambient temperature 23 °C +/- 2 °C)	± 1.0 °C or ± 1.0 % of reading, whichever is greater ± 2.0 °C at -10 °C to 0 °C ± 3.0 °C at -30 °C to -10 °C		± 1.5 °C or ± 1.5 % of reading, whichever is greater ± 2.0 °C at -10 °C to 0 °C ± 3.0 °C at -30 °C to -10 °C
Optical resolution	20:1 (calculated at 90 % energy)	12:1 (calculated at 90 % energy)	10:1 (calculated at 90 % energy)
Response time (95 %)	< 500 ms (95 % of reading)	< 300 ms (95 % of reading)	< 500 ms (95 % of reading)
Spectral response	8 to 14 microns		
Emissivity	0.10 to 1.00		
Display resolution	0.1 °C (0.2 °F)		
Repeatability (% of reading)	± 0.5 % of reading or ± 0.5 °C (whichever is greater)		± 0.8 % of reading or ± 1 °C (whichever is greater)
Auto Capture	Set time and interval to capture up to 99 measurements	-	
Internal memory	99 data point logging capability	-	
Flashlight	Yes	-	
Power	1 AA alkaline battery		
Battery life	30 hours with laser and backlight on	8 hours with laser and backlight on	10 hours with laser and backlight on
Weight	255 g (8.99 oz)		
Size	(175 x 85 x 75) mm (6.88 x 3.34 x 2.95) inches		
Operating temperature	0 °C to 50 °C (32 °F to 122°F)		
Storage temperature	-20 °C to 60 °C (-4 °F to 140 °F) (without battery)		
Operating humidity	Non- condensing @ ≤ 10 °C (50 °F) ≤ 90 % RH @ 10 °C (50 °F) to 30 °C (86 °F) ≤ 75 % RH @ 30 °C (86 °F) to 40 °C (104 °F) ≤ 45 % RH @ 40 °C (104 °F) to 50 °C (122 °F)		
Operating altitude	2000 meters above mean sea level		
Storage altitude	12,000 meters above mean sea level		
Drop test	3 meters		
Implement standard	Q/ASFO1		
Standards and agency approval			
Compliance	IEC 61010-1: Pollution Degree 2		
Laser safety	IEC 60825-1 Class 2, 650 nm, < 1 mW		
Ingress protection rating	IP 54 per IEC 60529		
Warranty	3 years		

Ordering information

Fluke-64 MAX IR Thermometer
Fluke-62 MAX+ IR Thermometer
Fluke-62 MAX IR Thermometer

Included with product

IR Thermometer
Printed instruction sheet
Carabiner (62 MAX+ only)
Product manuals available for download from fluke.com

Kits

Fluke T5-600/62 MAX+/1AC II
IR Thermometer, Electrical Tester
and Voltage Detector Kit

Fluke 62 MAX+/323/1AC
IR Thermometer, Clamp Meter and
Voltage Detector Kit

Optional accessories

FLK-TI-TRIPOD Tripod Mounting Accessory for 64 MAX

Fluke. *Keeping your world
up and running.®*

Fluke Corporation
PO Box 9090, Everett, WA 98206 U.S.A.

Fluke Europe B.V.
PO Box 1186, 5602 BD
Eindhoven, The Netherlands

**Modification of this document is not
permitted without written permission
from Fluke Corporation.**

For more information call:

In the U.S.A. (800) 443-5853 or
Fax (425) 446-5116
In Europe/M-East/Africa +31 (0)40 267 5100 or
Fax +31 (0)40 267 5222
In Canada (800)-36-FLUKE or
Fax (905) 890-6866
From other countries +1 (425) 446-5500 or
Fax +1 (425) 446-5116
Web access: <http://www.fluke.com>

©2017 Fluke Corporation.
Specifications subject to change without notice.
2/2017 6008893b-en