

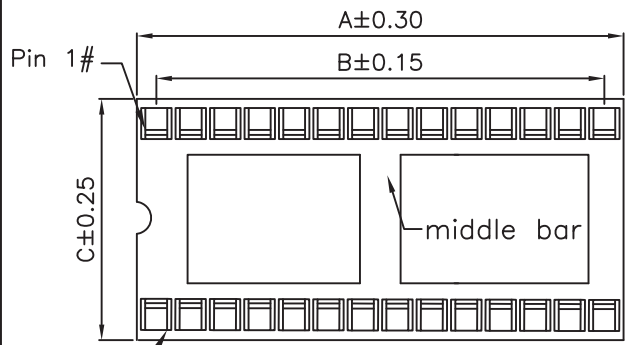
1

2

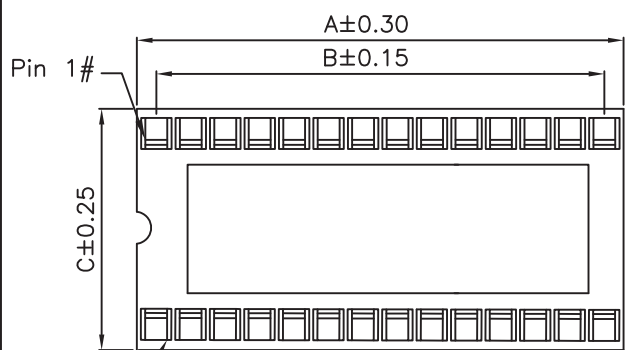
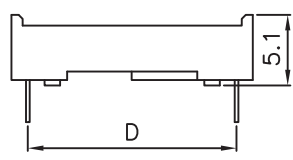
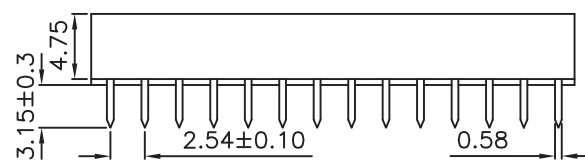
3

4

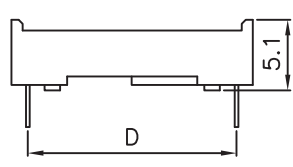
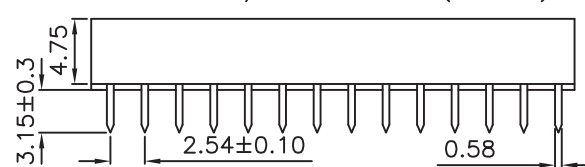
5



Note1: With middle bar(22-48P)



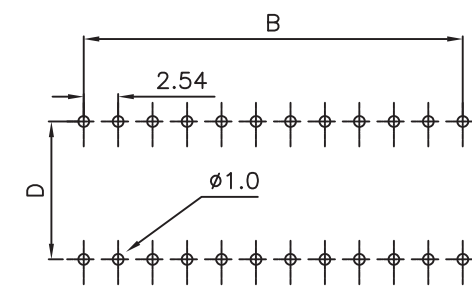
Note2: W/O middle bar(6-20P)



Specifications:
 Current rating:1.0A AC,DC
 Voltage rating:250V AC,DC
 Contact resistance:15m ohm max
 Insulator resistance:5000M ohm min
 Dielectric withstanding voltage:1000V AC/minute
 Operating temperature:-40°C to +105°C
 Material and Finish
 Insulator:PBT (UL94V-0)
 Standard Color:Black
 Contacts:Copper Alloy
 Finish:Tin Plating
 How To Order
 2227-XX-XX

| Circuits | DIM.A | DIM.B | DIM.C | DIM.D | Spacing |
|----------|-------|-------|-------|-------|---------|
| 6 | 7.62 | 5.08 | 10.16 | 7.62 | 03 |
| 8 | 10.16 | 7.62 | 10.16 | 7.62 | |
| 14 | 17.78 | 15.24 | 10.16 | 7.62 | |
| 16 | 20.32 | 17.78 | 10.16 | 7.62 | |
| 18 | 22.86 | 20.32 | 10.16 | 7.62 | |
| 20 | 25.40 | 22.86 | 10.16 | 7.62 | |
| 24 | 30.48 | 27.94 | 10.16 | 7.62 | |
| 28 | 35.56 | 33.02 | 10.16 | 7.62 | |
| 22 | 27.94 | 25.40 | 12.70 | 10.16 | 04 |
| 24 | 30.48 | 27.94 | 17.78 | 15.24 | 06 |
| 28 | 35.56 | 33.02 | 17.78 | 15.24 | |
| 32 | 40.64 | 38.10 | 17.78 | 15.24 | |
| 40 | 50.80 | 48.26 | 17.78 | 15.24 | |
| 42 | 53.34 | 50.80 | 17.78 | 15.24 | |
| 48 | 60.96 | 58.42 | 17.78 | 15.24 | |

03: Space:7.62mm
 04: Space:10.16mm
 06: Space:15.24mm
 NO. Of Position



PCB LAYOUT

RoHS Compliant

| | | | |
|-----|-------------|-------|---------|
| E | | | |
| D | | | |
| C | | | |
| B | 05-SEP-2019 | 新增包裝圖 | Ben Lin |
| A | 10-FEB-2009 | | Allen |
| REV | DATE | FILE | BY |

DRAWN: Allen
 CHECKED: Jerry Chen
 APPROVAL: Mike Wu

GENERAL TOLERANCE:
 .X=±0.2
 .XX=±0.15
 UNIT: MM
 SCALE:
 SHEET: 1 / 2
 PROJECTION:

Neltron Industrial Co., Ltd.

DESCRIPTION: 2.54mm IC Socket Stamp Pin

PART NO: 2227-XX-XX

SIZE: **A4**