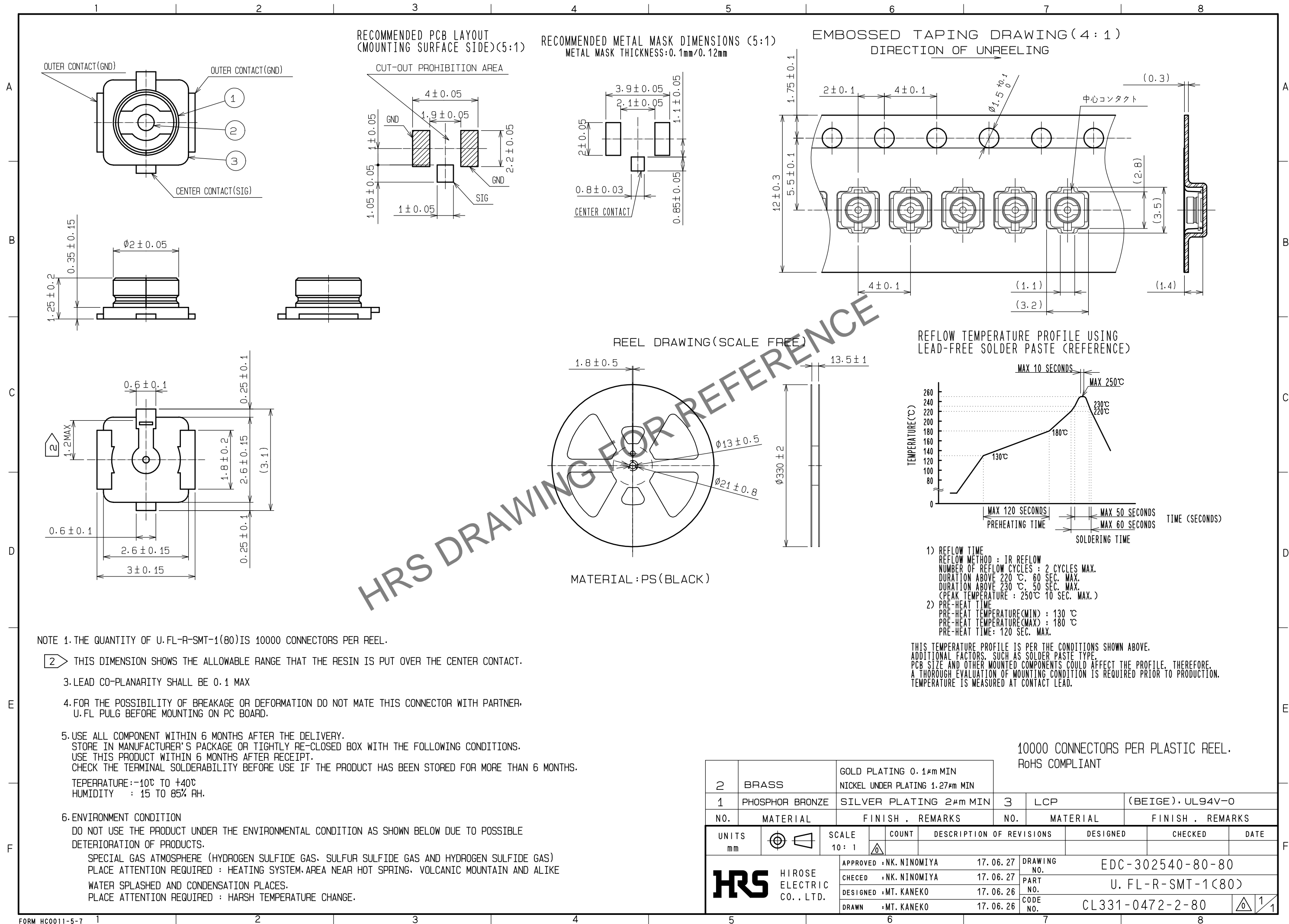






Apr.1.2025 Copyright 2025 HIROSE ELECTRIC CO., LTD. All Rights Reserved.
In case of consideration for using Automotive equipment / device which demand high reliability, kindly contact our sales window correspondents.



APPLICABLE STANDARD					
RATING	OPERATING TEMPERATURE RANGE	-40 °C TO +105°C(90%RH MAX)	STORAGE TEMPERATURE RANGE	-30°C TO +70°C(90%RH MAX)	
	POWER	— W	CHARACTERISTIC IMPEDANCE	50 Ω (0 TO 8 GHz)	
	PECULIARITY	—	APPLICABLE CABLE	—	
SPECIFICATIONS					
ITEM		TEST METHOD		REQUIREMENTS	QT AT
CONSTRUCTION					
GENERAL EXAMINATION		VISUALLY AND BY MEASURING INSTRUMENT.		ACCORDING TO DRAWING.	X X
MARKING		CONFIRMED VISUALLY.			— —
ELECTRIC CHARACTERISTICS					
CONTACT RESISTANCE		10 mA MAX (DC OR 1000 Hz).		CENTER CONTACT 20 mΩ MAX.	X —
				OUTER CONTACT 10 mΩ MAX.	X —
INSULATION RESISTANCE		100 V DC.		500 MΩ MIN.	X —
VOLTAGE PROOF		200 V AC FOR 1 min.CURRENT LEAKAGE 2mA MAX.		NO FLASHOVER OR BREAKDOWN.	X X
VOLTAGE STANDING WAVE RATIO 		FREQUENCY 0.045 TO 6 GHz.		VSWR 1.3 MAX.	X —
		FREQUENCY 6 TO 8 GHz.		VSWR 1.4 MAX.	
INSERTION LOSS		FREQUENCY — TO — GHz		— dB MAX	— —
MECHANICAL CHARACTERISTICS					
CONTACT INSERTION AND EXTRACTION FORCES		BY STEEL GAUGE.		INSERTION FORCE — N MAX.	— —
				EXTRACTION FORCE — N MIN	— —
INSERTION AND EXTRACTION FORCES		MEASURED BY APPLICABLE CONNECTOR.		INSERTION FORCE — N MAX.	— —
				EXTRACTION FORCE — N MAX.	— —
MECHANICAL OPERATION		30 TIMES INSERTIONS AND EXTRACTIONS.		1) CONTACT RESISTANCE: CENTER CONTACT 25 mΩMAX. OUTER CONTACT 15 mΩMAX. 2) NO DAMAGE, CRACK AND LOOSENESS OF PARTS.	X —
VIBRATION		FREQUENCY 10 TO 100 Hz SINGLE AMPLITUDE 1.5 mm, 59 m/s ² AT 5 CYCLES FOR 3 DIRECTIONS.		1) NO ELECTRICAL DISCONTINUITY OF 1μs. 2) NO DAMAGE, CRACK AND LOOSENESS OF PARTS.	X —
SHOCK		735 m/s ² DIRECTIONS OF PULSE 11 ms AT 3 TIMES FOR 6 DIRECTIONS.			X —
CABLE CLAMP ROBUSTNESS (AGAINST CABLE PULL)		APPLYING A PULL FORCE THE CABLE AXIALLY AT — N MAX.		1) NO WITHDRAWAL AND BREAKAGE OF CABLE. 2) NO BREAKAGE OF CLAMP.	— —
ENVIRONMENTAL CHARACTERISTICS					
DAMP HEAT		EXPOSED AT 40 °C, 95 % TOTAL 96 h		1) INSULATION RESISTANCE: 10 MΩ MIN. (AT HIGH HUMIDITY) 2) INSULATION RESISTANCE: 500 MΩ MIN. (AT DRY) 3) NO DAMAGE, CRACK AND LOOSENESS OF PARTS.	X —
RAPID CHANGE OF TEMPERATURE		TEMPERATURE -40 → 5→35→ +105→ 5→35°C TIME 30 → 3 → 30 → 3 min. UNDER 5 CYCLES.		NO DAMAGE, CRACK AND LOOSENESS OF PARTS.	X —
CORROSION SALT MIST		EXPOSED IN 5% SALT WATER SPRAY FOR 48 h.		VSWR 1.3 MAX.	X —
	COUNT	DESCRIPTION OF REVISIONS	DESIGNED	CHECKED	DATE
	1	DIS-D-00005074	NK. NINOMIYA	TS. NOBE	20200619
REMARK 10000PCS / PLASTIC REEL Unless otherwise specified, refer to JIS C 5402.			APPROVED	MH. YAMANE	20090525
			CHECKED	NK. NINOMIYA	20090525
			DESIGNED	MT. KANEKO	20090523
			DRAWN	MT. KANEKO	20090522
Note QT:Qualification Test AT:Assurance Test X:Applicable Test			DRAWING NO.		ELC4-302540-86
	SPECIFICATION SHEET		PART NO.	U. FL-R-SMT-1 (80)	
	HIROSE ELECTRIC CO., LTD.		CODE NO.	CL331-0472-2-80	 1/1