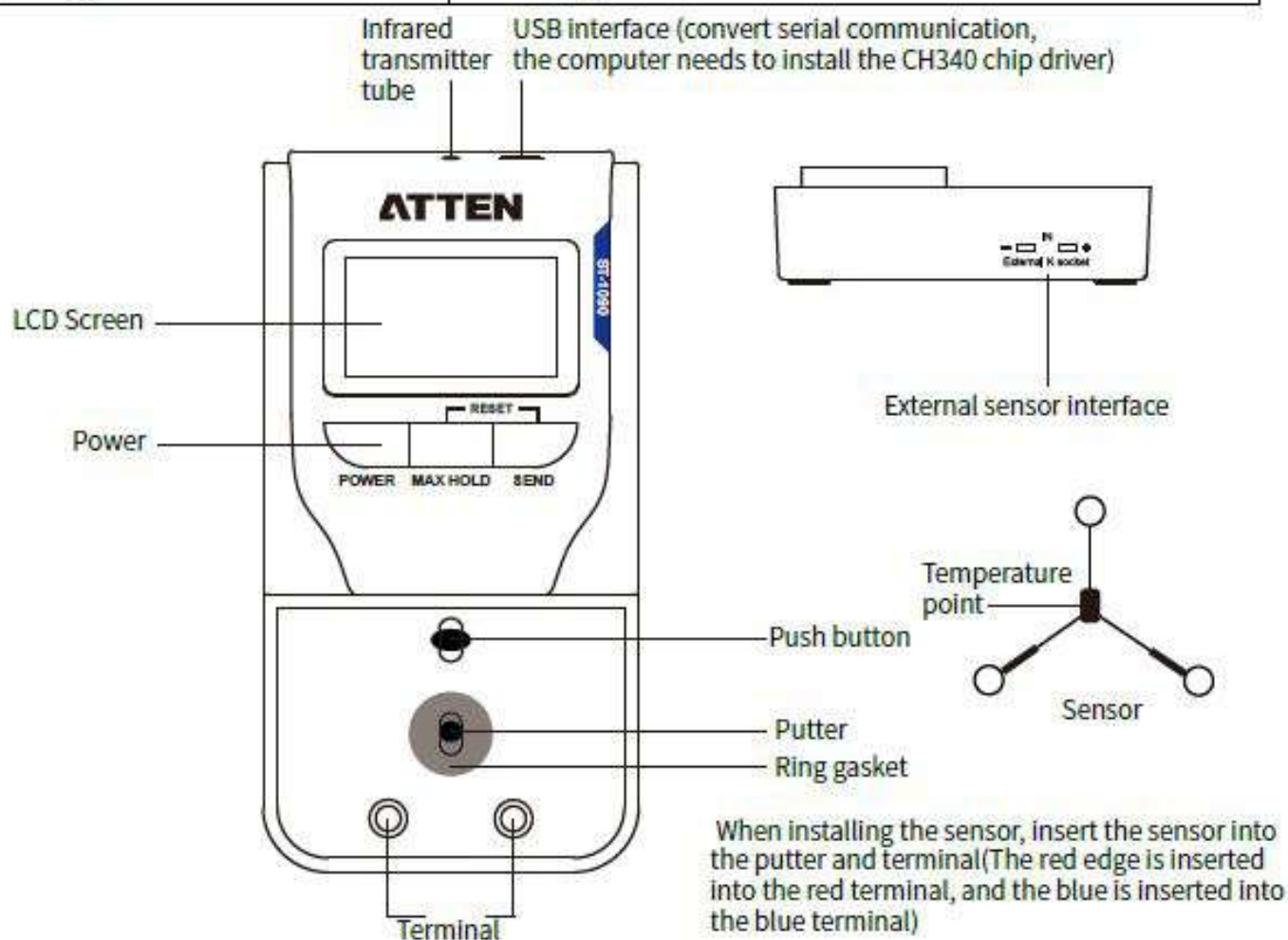


Specification:


| | |
|-----------------------|---------------------------------------|
| Model | ST-1090 |
| Resolution | 1°C/1°F |
| Temperature range | 0-800°C/32-1500°F |
| Accuracy Temperature | ±5°C/±9°F |
| Sensing wire | K-type thermocouple |
| Display | LCD |
| Power | 9V DC High-performance carbon battery |
| Operating environment | 0°C~40°C/32°F~104°F |
| Size | 75x143.5x41.5mm |
| Weight | 185g |



Instructions

1. Open the battery cover on the back of the instrument, insert the battery and close the back cover. Please pay attention to the correct connection of the battery when inserting the battery.
2. Put the sensor into the putter and terminal (red edge into the red terminal, blue into the blue terminal).
3. Press the power and check the display screen. When the display shows room temperature, you can perform operation or measurement.
4. The soldering iron tip sticks the flux to the test point, and the temperature will be displayed within 2 seconds.
5. After use, press and hold the power button to shut down.

Precautions

1. The sensor is made of very thin ($\phi 0.2\text{mm}$) metal wire. It should be used with care and not bend or break.
2. The housing of the thermometer is made of plastic. Do not touch the tip of the soldering iron.
3. The sensor is a consumable item (life of about 50-60 times), long time use, the alloy layer is worn out, the measurement will be inaccurate, and need to be replaced New sensor.
4. Alcohol can be used to clean the flux attached to the terminal. Do not use thinner or volatile oil.
5. If the display shows -1, it means that the temperature sensor has been scrapped (or no sensor is installed) and a new one needs to be replaced.
6. If it displays , it means the battery is low, and the temperature cannot be measured normally, and the battery needs to be replaced. It is recommended remove the battery if not to use it for a long time .
7. The 191-212 temperature sensor is only suitable for measuring the temperature below 500°C , such as measuring higher temperature, please use the appropriate Temperature probe.
8. Do not blow the hot air gun directly to the ST-1090 for measurement. Blowing directly will damage the ST-1090 host.

Note: Thermocouple and external temperature sensing wire cannot be used at the same time.

Package list

Host ST-1090:1

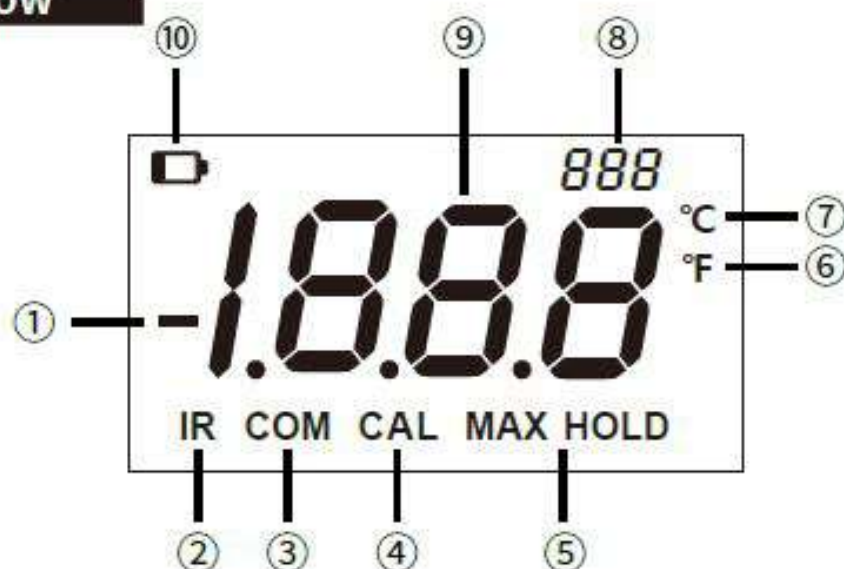
Battery: 1

K-type thermocouple test wire:1

Sensor : 10

MINI USB data line 1

LCD Show



- ① Negative characters
- ② Infrared IR function characters
- ③ Serial port function characters
- ④ CAL function character
- ⑤ Characters of maximum temperature hold function

- ⑥ Temperature unit Fahrenheit
- ⑦ Temperature unit Celsius
- ⑧ Counting function display
- ⑨ Main window display: display temperature and other data
- ⑩ Battery voltage is low symbol

Operation guide

一.Switch function

Short press the "POWER" button to turn on, the display shows the room temperature when turning on; you need to long press the "POWER" button to turn off.

二.The highest temperature to maintain the interface

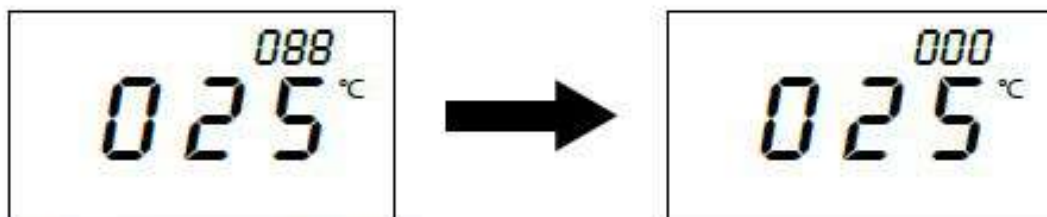
Short press the "MAX HOLD" key to open the maximum temperature hold interface, as shown in Figure 3-1, short press again to close and return to the working interface.



Figure3-1

三.The display interface of the number of times the sensor wire is used

Each time the temperature is tested, the upper right display area of the main window will increase the number of times, up to 999 times, long press "RESET" The combination key can be reset to zero times. (When used 50 times, it flashes to prompt to replace the sensing wire)



四.IR and serial port use display interface

After testing the temperature, short press the SEND key to send the data, the IR character will be displayed as shown in Figure 4-1 (support ST-3150 soldering station)



Figure4-1



Figure4-2 (Serial communication baud rate 9600)

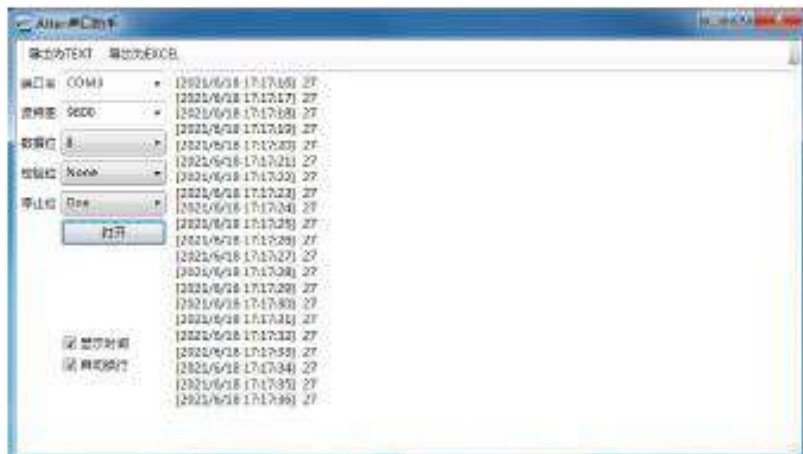
The serial port data line is connected to the thermometer and the computer, the thermometer displays COM as shown in Figure 4-2; the thermometer sends to the computer every 100ms temperature data.



ATTEN serial port assistant

Download ATTEN serial port assistant from the official website(You can also use other serial port assistants)

Note:convert serial communication, the computer needs to install the CH340 chip driver



五.Low battery display interface

When the battery power is low, the low battery symbol is displayed in the upper left corner, prompting that the battery needs to be replaced as soon as possible to avoid affecting the use (Low battery temperature measurement is not accurate).



六.The sensor wire is damaged or there is no sensor wire display interface



七.Automatic shutdown function

When the thermometer is not in use, it enters the shutdown countdown until the set shutdown time (default 15 minutes, can be set), the thermometer automatic shut-down.

Long press the "MAX HOLD" key to enter Figure 7-1, the "POWER" key shortens the time, and the "SEND" key extends the time (time setting range 1~240 minutes). After the setting is completed, long press the "MAX HOLD" button to exit and return to the working interface.

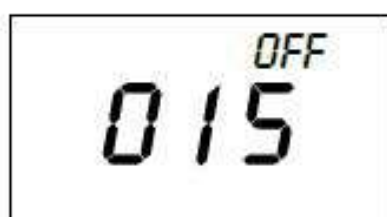


Figure7-1

八.Temperature unit switch setting interface

Long press the "MAX HOLD" key to enter Figure 7-1, press the "MAX HLOD" key again to enter Figure 8-1, and press the "SEND" key.Switch °C/°F; after switching, press and hold the "MAX HOLD" key to exit and return to the working interface.

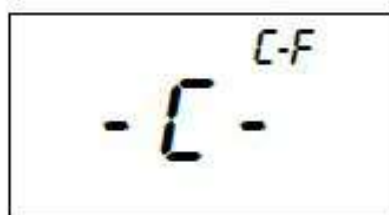


Figure8-1

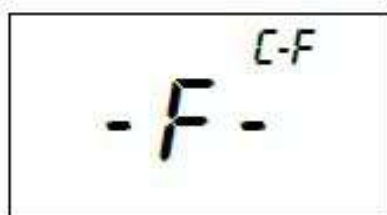


Figure8-2

SHENZHEN ATTEN TECHNOLOGY CO.,LTD.

Add: Floor 8, Building 2, Senyang High-tech park, 7 West Road
High-tech Park, Guangming New district, Shenzhen 518132, china

Tel: 86-755-8602 1373 Fax: 86-755-8602 1365

Web: www.atten.com

Facebook: <https://www.facebook.com/attencn/>

E-mail: sales@atten.com.cn

Engineer's partner
工程师的伙伴

Copyright Reserved
MADE IN CHINA



Soldering Tester ST-1090

- Large LCD screen.
- Accurate temperature measurement 0-800°C.
- Performance stable and easy to operate.
- IR temperature calibration.
- USB communication function.
- Automatic shut down function.



CONTACT US



Product description

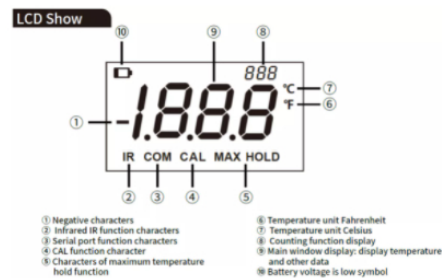
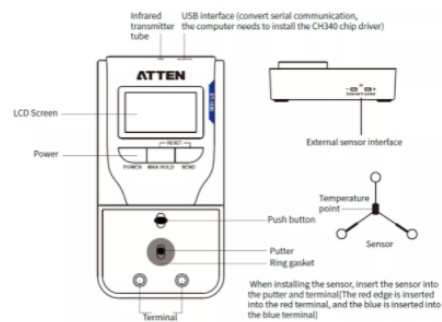
Technical specifications

Optional accessories

Download

Features:

- ◆ Power on/off function. °C/°F is available and exchangeable.
- ◆ MAX HOLD function, to grab and display the maximum temperature.
- ◆ Max 999 times sensing wire used character can be shown on screen.
- ◆ When the sensing wire is used for 50 times, it will flash to prompt to replace the sensing wire.
- ◆ Connect computer with USB to realize automatic data collection.
- ◆ Infrared (IR) temperature calibration function, can be used with ST-3150, to calibrate temperature.
- ◆ It will tell you when the battery is running low.
- ◆ Automatic error reporting, when sensing wire damaged or no sensing wire.



Previous page: No more data

Next page: No more data

Popular Products



Soldering Tester ST-1090



ST-1016-CP ESD Safe Fume
Extractor/Solder Smoke Absorber



AT850D Digital Hot Air Station



MS-500 3 in 1 Rework Station



ST-80 Digital Soldering

ATTEN

Engineer's Partner

8F, B2, Senyang High-tech Park, 7 West Road, Guangming New
district, Shenzhen, P.R. China

✉ sale@atten.com



Home

About Us

Products

Support

Videos

News

Contact Us

Products

- Soldering
- Desoldering/Rework
- Power Supply
- Tool Accessories

Support

- Discontinued model
- Terms Of Service
- Pre-sales Solution
- Maintenance & Repair

*Name

Name

Phone

Phone

*Email

Email

*Message

Message

Submit

Copyright © Shenzhen Atten Technology Co., Ltd. All rights reserved.

